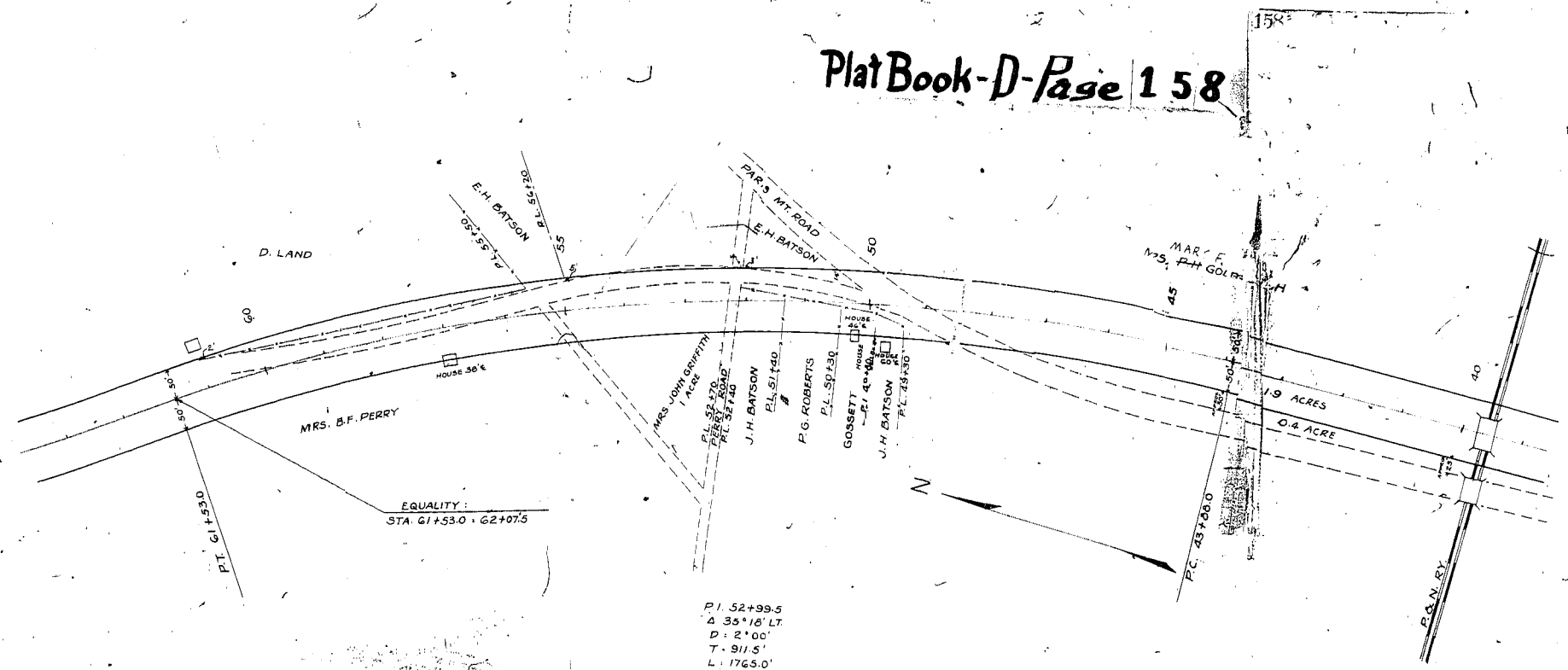


Plat Book-D-Page 158

DHC 101888



EQUALITY:
STA 61+53.0 - 62+07.5

P.I. 52+99.5
Δ 35°18' LT
D = 2'00"
T = 911.5'
L = 1765.0'
E = 139.0'

DEC 19 1890

*This Plat Book and Maps
were made December 19th 1890
Chas. A. Brown*

