

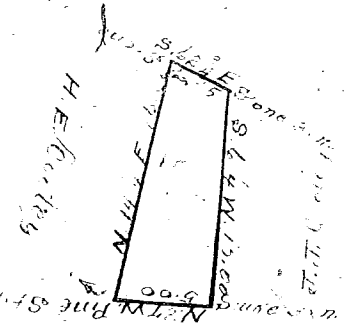
Scale of 10 chs. per inch.

State of South Carolina,
Greenville County.

I have re-surveyed the above piece of land for B.F. Staten and find it to contain 71 acres, and has such shape, marks and boundaries as the above plat represents.

Surveyed Jan. 4, 1919.
W.A. Hester, Surveyor.

Copied and certified to by
James R. Bates, R.M.C. Jan. 9th, 1919.



THE above plat represents a lot of land sold by J.J. Cooley to H.E. Cooley, containing 6 acres, it being the lot of land on which the residence of H.E. Cooley now stands, being on both sides of the road from Cooley's Bridge to Greenville.

Surveyed Decb. 1888 - Platted May 22nd, 1918 -
N.B. The chain this land was measured with was tested and was found 7 inches long and cut out April 23rd, 1900 - This was a half chain, making 14 in a whole chain.

J.M. Cox, Surveyor.

Copied and certified to Jan. 11th, 1919
by James R. Bates, R.M.C.

