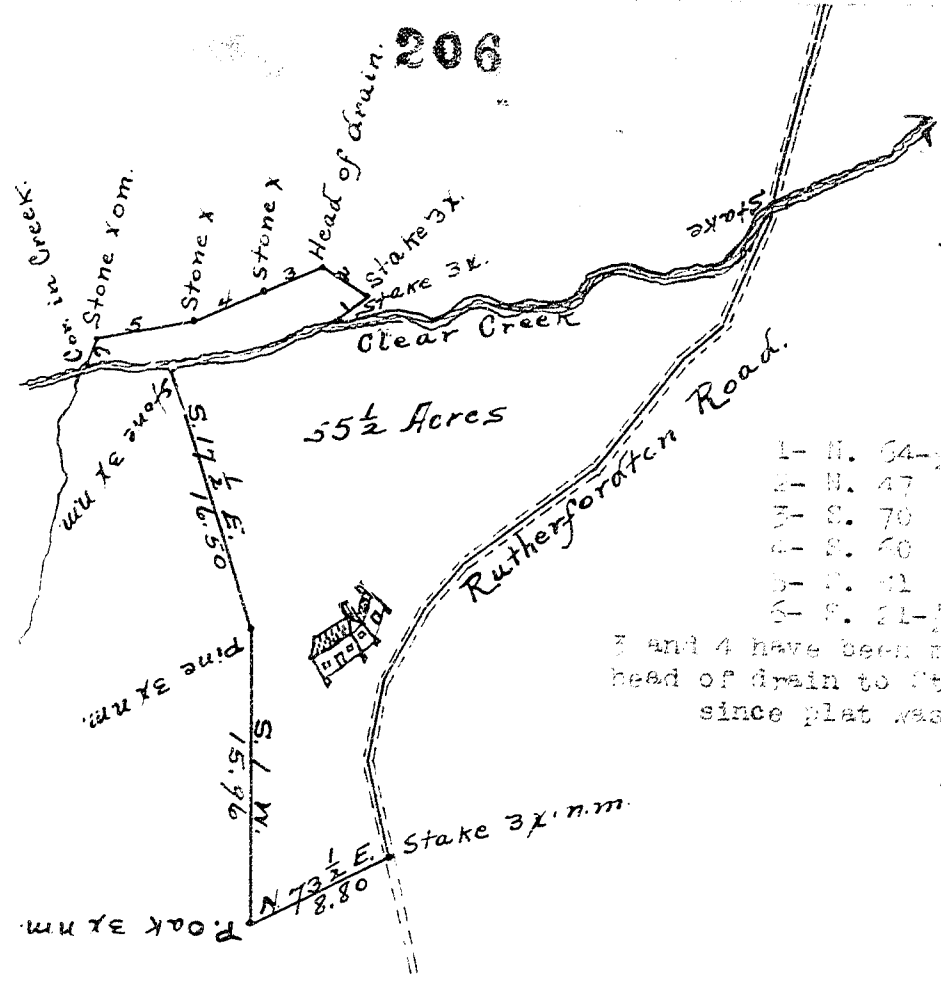
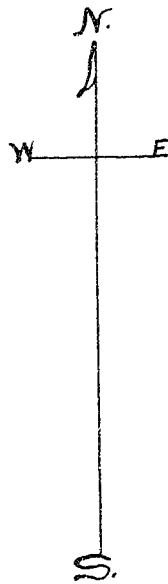


206



1- N. 64-1/2 W. 1.30 c.
2- N. 47 W. 3.30 "
3- S. 70 W. 7.40 "
4- S. 70 W. 1.75 "
5- S. 51 W. 3.00 "
6- S. 21-1/2 W. 2.40 "

3 and 4 have been made straight from head of drain to Stewarts stone 3x since plat was first made.

State of South Carolina,  
County of Greenville.

Present to the test of Mary Ann Barber, I surveyed for her this day a certain parcel or piece of land situate, lying and being in the State and County aforesaid on west side of Ruthersforten Road and south side of Clear Creek, headwaters of Tyger River. The same being known as a part of the estate of Mary Ann Barber and of which the above plat is a true representation.

Surveyed Nov. 21st, 1911.  
J. W. Barber, Surveyor.

Recorded for December 15th, 1911

and copied by Jas. Knates.