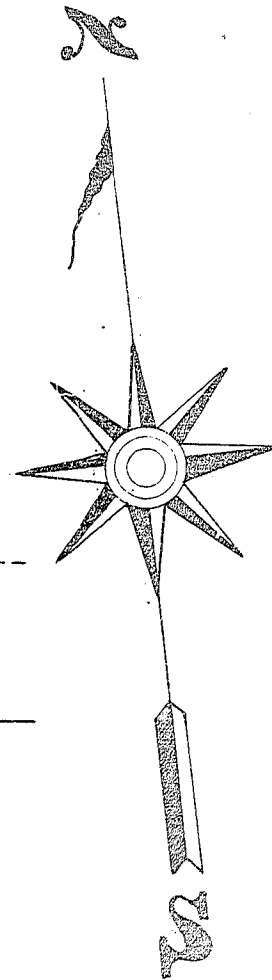
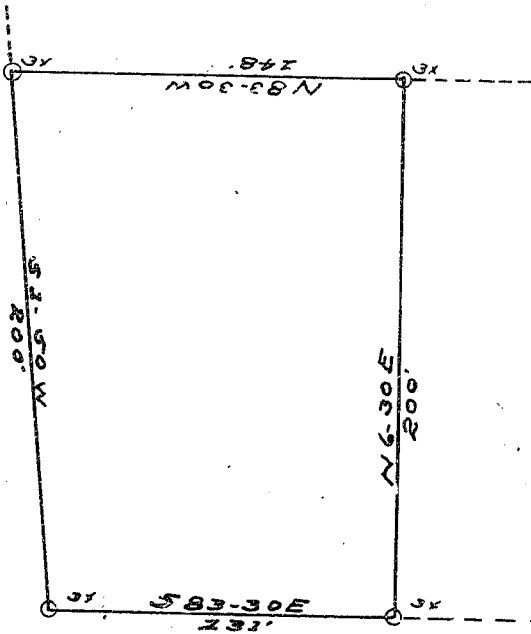


WILTON ST.



EARLE ST.

PLAT
OF
MIRIAM & ISABEL COHEN'S LOT
GREENVILLE,

NOTE BOOK I,
PAGE 48
OCT 24th 1914.
SCALE 50' = 1"

RECORDED IN
PLAT BOOK C
PAGE 194
R.M.C. OFFICE - OCT. 26 - 1914 - W.D.N.

SURVEYED & PLATTED S. C. BY WILL D. NEVES, ENGR.

Greenville S.C.