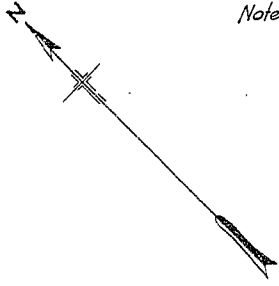
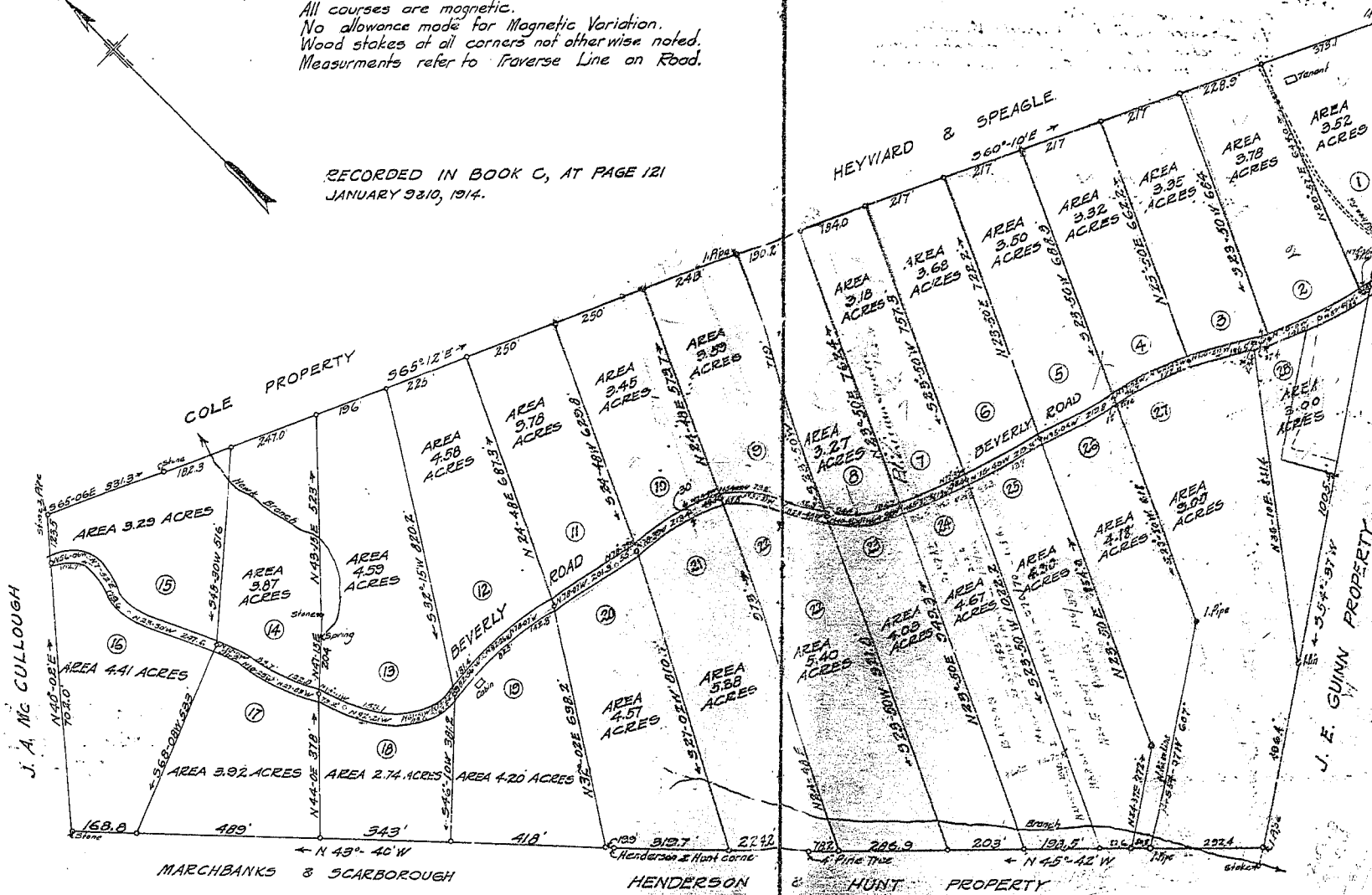


Note - Surveyed Sept. & Oct. 1913.
 All courses are magnetic.
 No allowance made for Magnetic Variation.
 Wood stakes at all corners not otherwise noted.
 Measurements refer to Traverse Line on Road.



RECORDED IN BOOK C, AT PAGE 121
 JANUARY 23 10, 1914.



BEVERLY HILL

PROPERTY OF
 R. G. WILLIAMS
 NEAR PARIS, S. C.
 SCALE 1" = 200' OCT. 15, 1913.

Surveyed by R.E.D.
 Plotted " R.E.D. & Roch.
 Traced " Roch.
 Recorded " Roch.
 Checked " R.E.D.
 Field Books 8216
 JOB 204-A.B.C.C.

H. OLIN JONES, ARCHITECT & ENGINEER.
 GREENVILLE, S. C.

219.8
 119.3
 239.1

Note: Tracts 25, 26, 27, & 28
 Revised January 1915
 by R. E. Dalton, Engr.