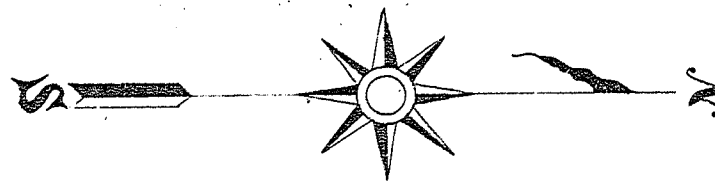
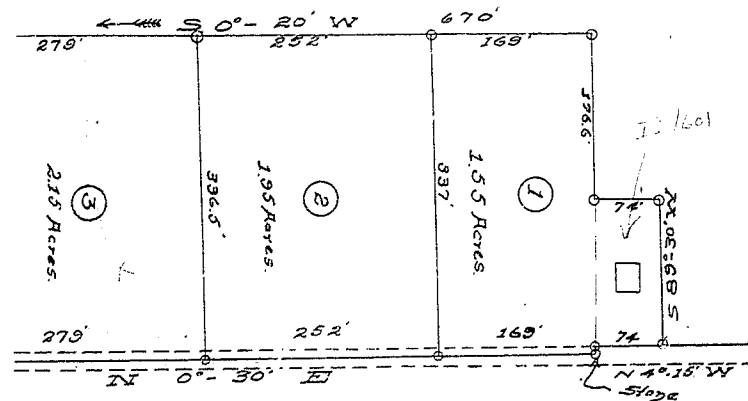


RECORDED JULY-17-1913  
 W.D. Nevels, Edg.  
 JUNE 1913  
 SCALE 1" = 100 Ft



See C-90  
C-189



**PLAT**  
**OF**  
 PORTION OF JAS. E. HALL ESTATE  
 IN  
 NICLE TOWN  
 GREENVILLE, S. C.  
 SURVEYED & PLATTED BY *Will D. Nevels, Edg.*