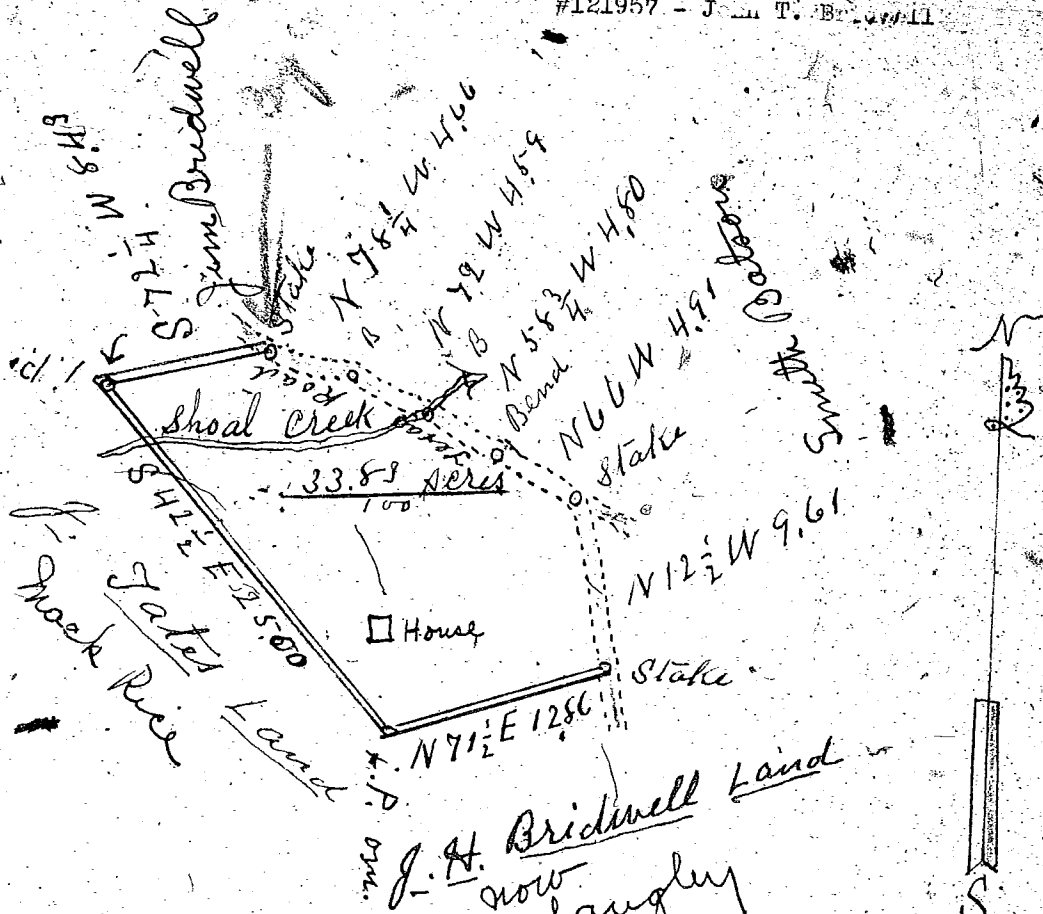


#121957 - J. M. T. Br...



J. A. Bridwell Land
 now
 J. J. Langley

Scale of 10 chs. Per inch

South Carolina
 Greenville County

I have surveyed
 the above Tract of
 land and find it
 to contain 33 ⁸³/₁₀₀ Acres
 and it has such shape
 marks and boundaries
 as the above Plat
 represents. Surveyed
 W. A. Hester 1919
 Surveyor

PLAT APPROVED
 FOR LOAN
 H. Byrum

#121957 Filed This 18 day of Dec 19 1919
 and Recorded in Vol. B Page 67 at

Ollie Farnsworth
 Register Mesne Conveyance Greenville County, S. C.

