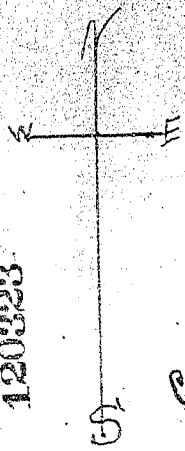
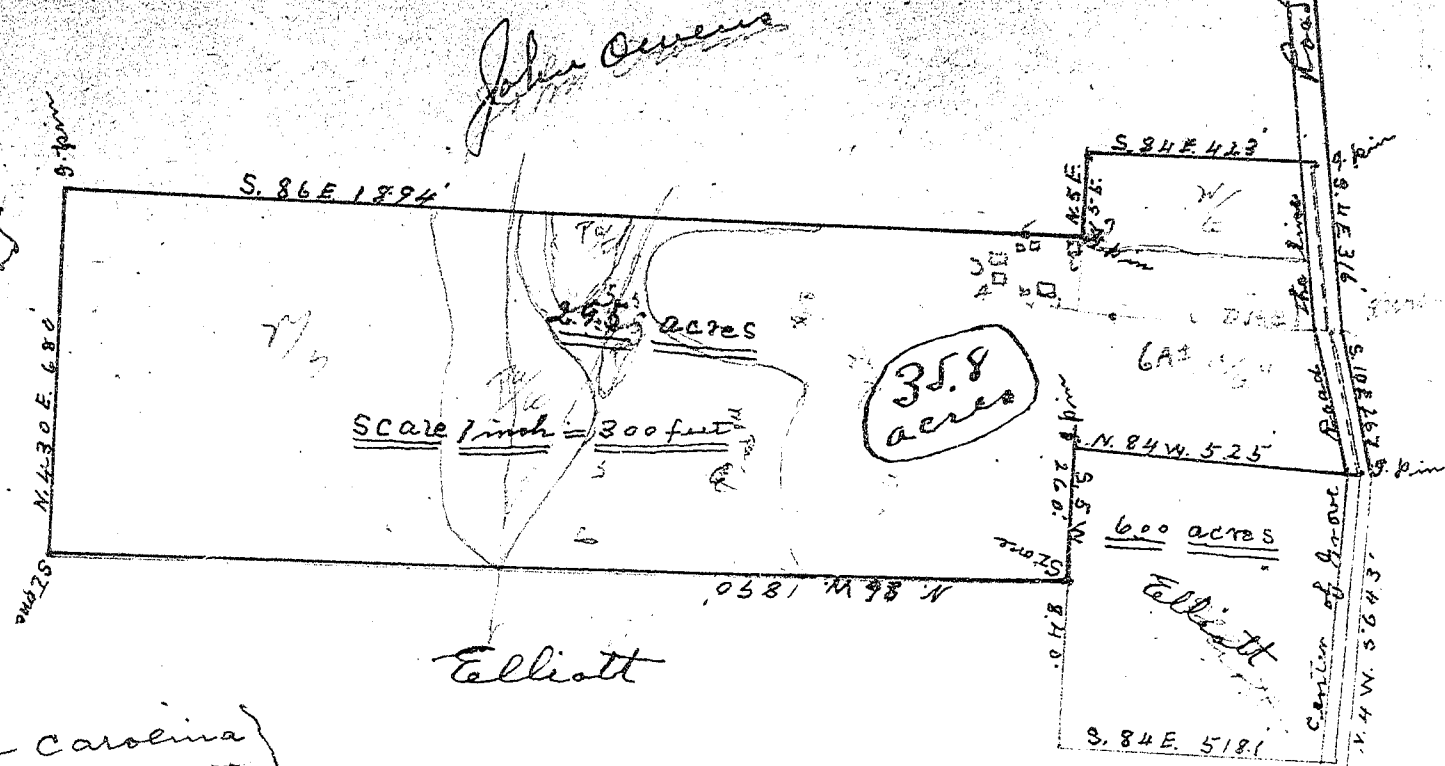


120323



*CC 2/2*



*John Owens*

*Elliott*

South Carolina  
Greenlee County

The above plat was made from data taken from a deed made by  
 The Astor Lumber Co. to O. B. Springfield and recorded in Vol. 223 - page 204  
 in the office of R. M. C. for Greenlee County S. C. and the original survey  
 of this land was made by me in May 1940, and this plat constructed  
 from the metes & bounds as given above. Done this Aug 14th, 1945.

*By A. Elliott*