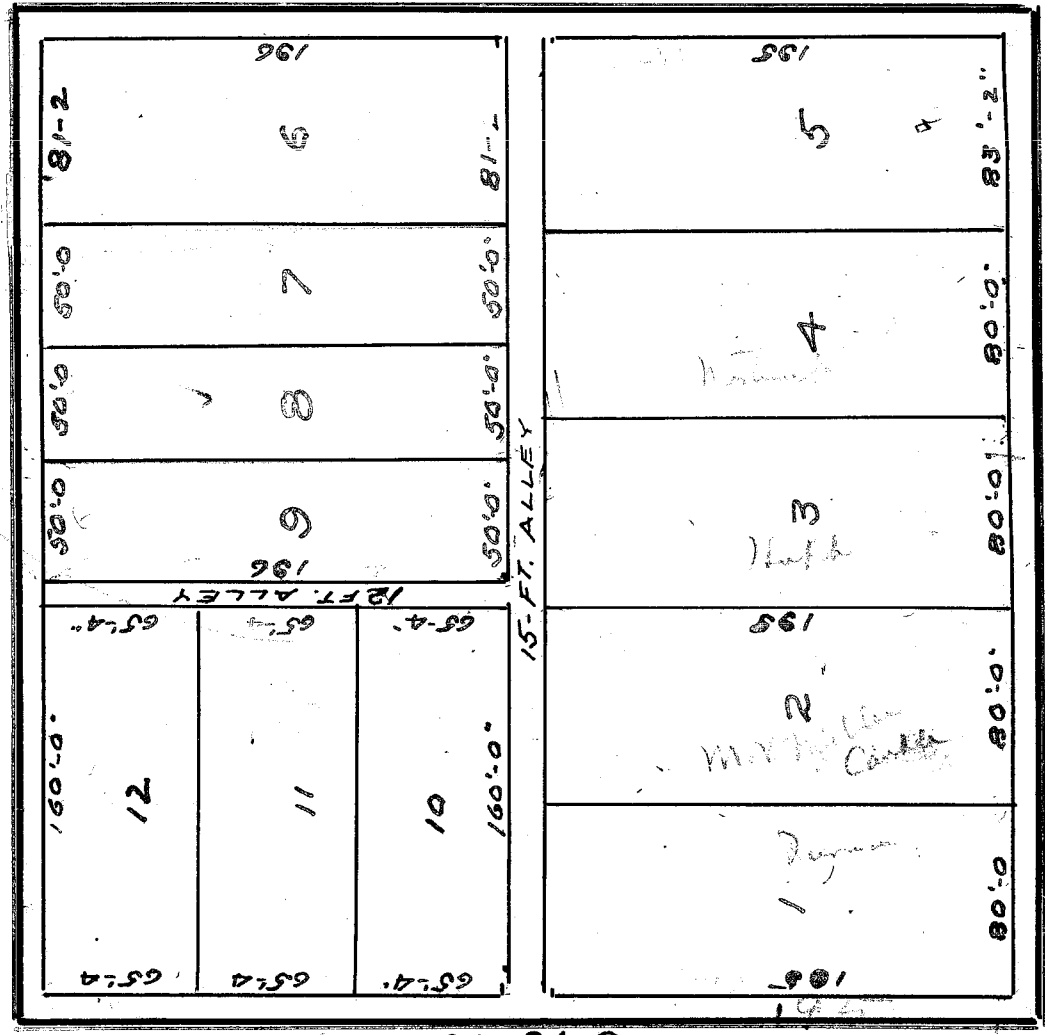


240

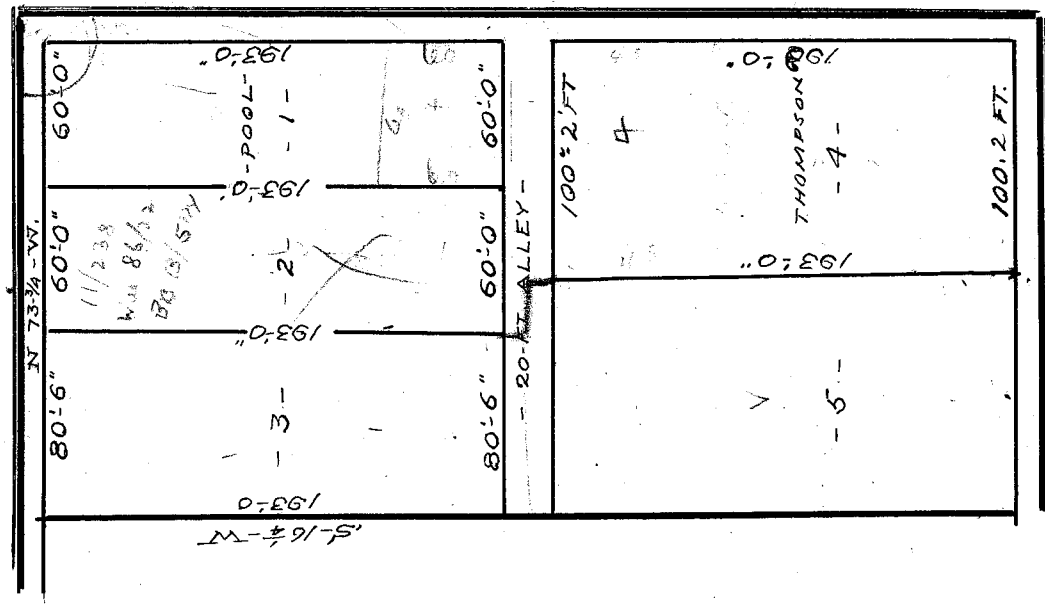
GARLINGTON ST. - N - 73° 45' - W



PENDLETON ST. - N - 73° 45' - W

JAS. T. WILLIAMS TRACT
PROPERTY OF
HENRY T. MILLS

MEMMINGER ST. - S - 16° 15' - W



S
E-E + W-N
N-W

195
12
65
65
65

60/82
186/15

9

7

2

186/15