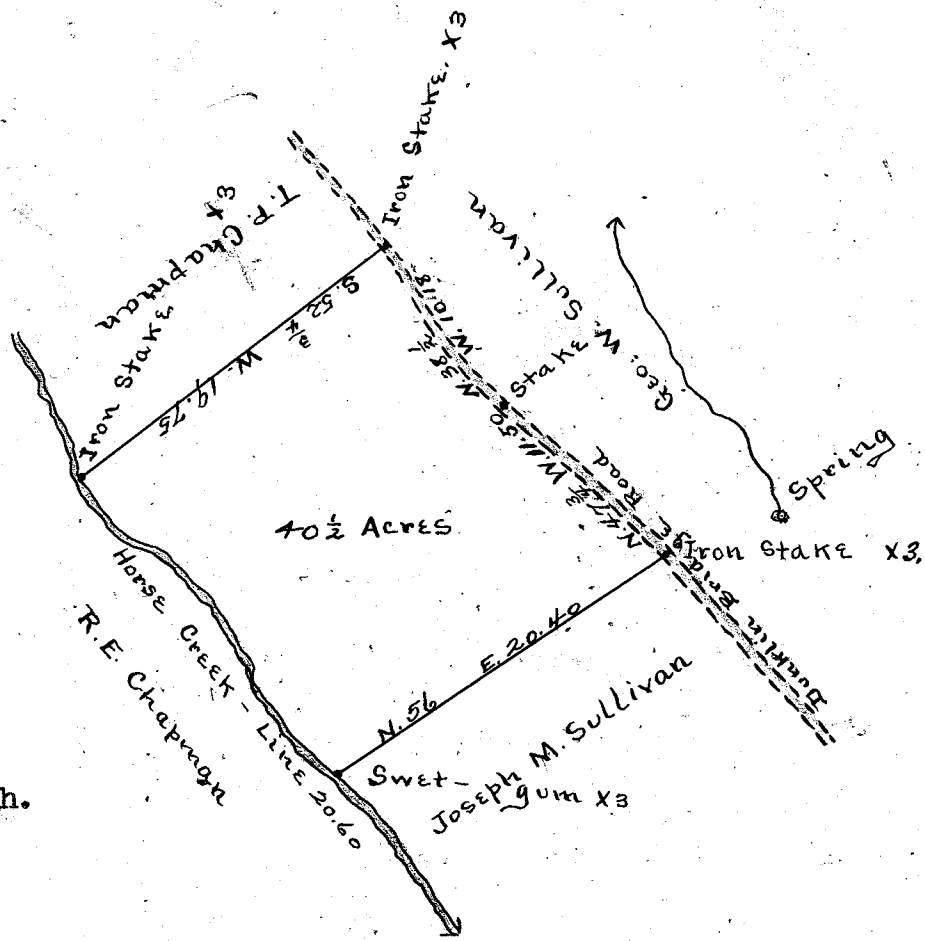


26  
170  
994  
106  
626.4



Scale 10 chs. per. inch.

State of South Carolina,  
Greenville County.

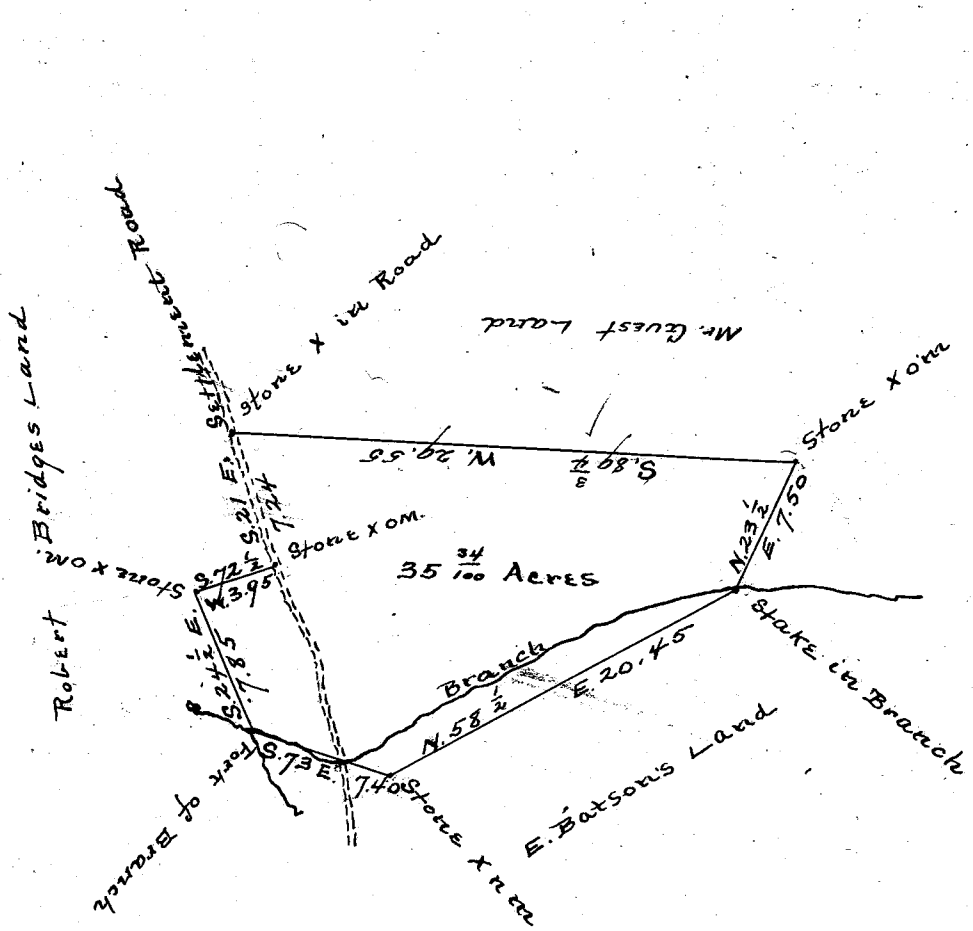
By request of Geo. W. Sullivan I have surveyed and laid out a certain tract of land for Wm. M. McDougle, situate in Dunklin Township in the State and County aforesaid and lying between the Dunklin Bridge Road and Horse Creek and I find it to contain forty and one-half (40- $\frac{1}{2}$ ) acres, having such form, marks and boundaries as are represented by the above plat. Surveyed Aug. 22nd, 1904.

Wm. F. Lee, Surveyor.

Recorded Nov. 14th, 1910,  
and copied by J.B.

-----

431



The State of South Carolina,

County of Greenville.

By the request of J.L. Batson, I have surveyed and cut off the above piece of land from E. Batsons Estate, and find it to contain thirty-five and  $\frac{34}{100}$  acres, and it hath such shapes, marks and boundaries as the above plat represents.

Surveyed Jan. 12th, 1911.

Recorded Jan. 18th, 1911.

W.A. Hester, Surveyor.

and Copied by James R. Bates.