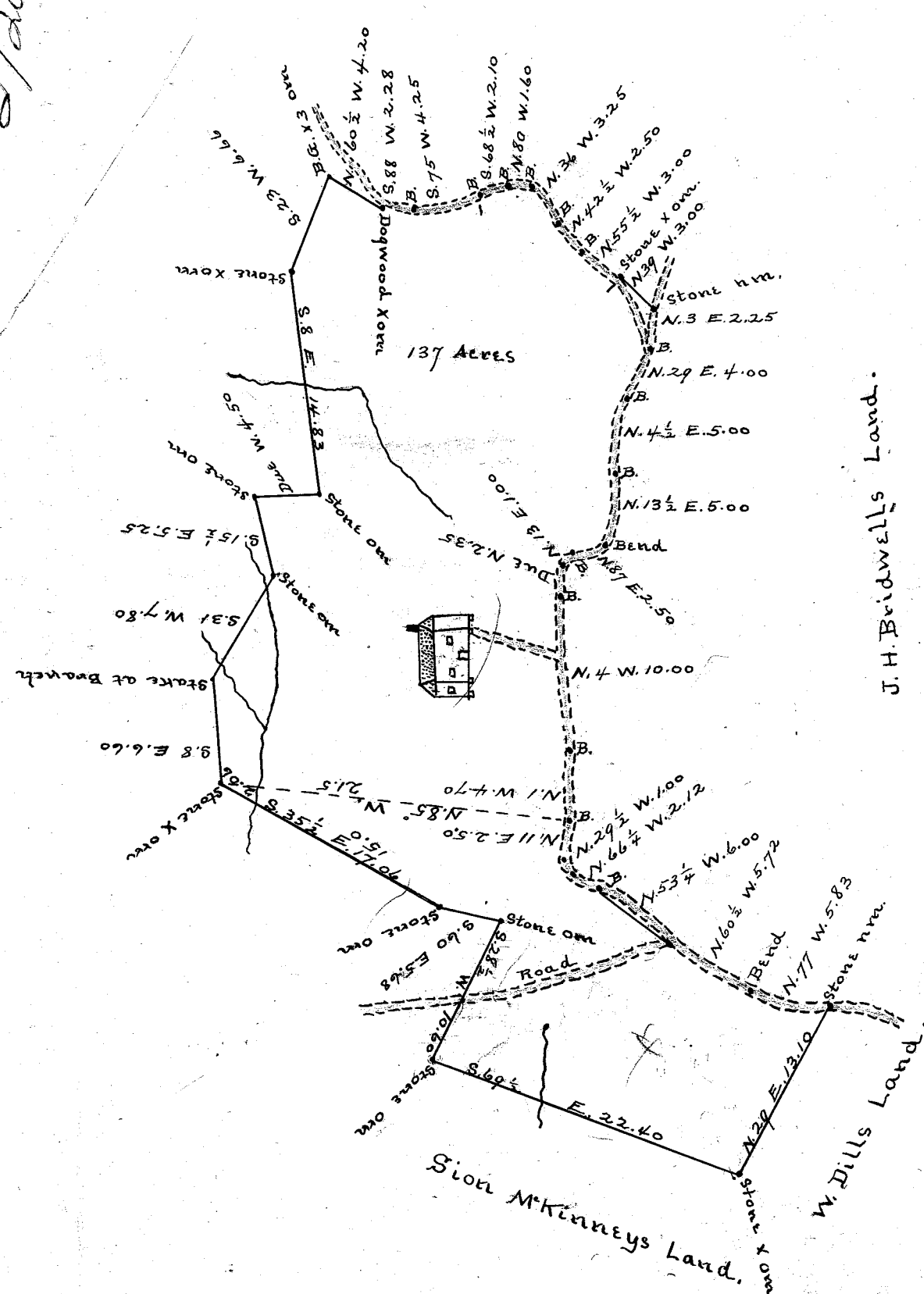


296/543
253/287



Scale 10 chains per. inch.

South Carolina,
Greenville County.

Pursuant to a request of A. New I have surveyed and admeasured the above piece, parcel and tract of land, lying, situate and being in the State and County aforesaid, on branch waters of North Saluda River and find it to contain One hundred and thirty-seven (137) acres, and it hath such shapes, marks and boundaries as the above plat represents.

Surveyed Jan. 11th, 1909.

Recorded April 8th., 1910.

W.A. Hester., Surveyor.

and copied by J.B.