

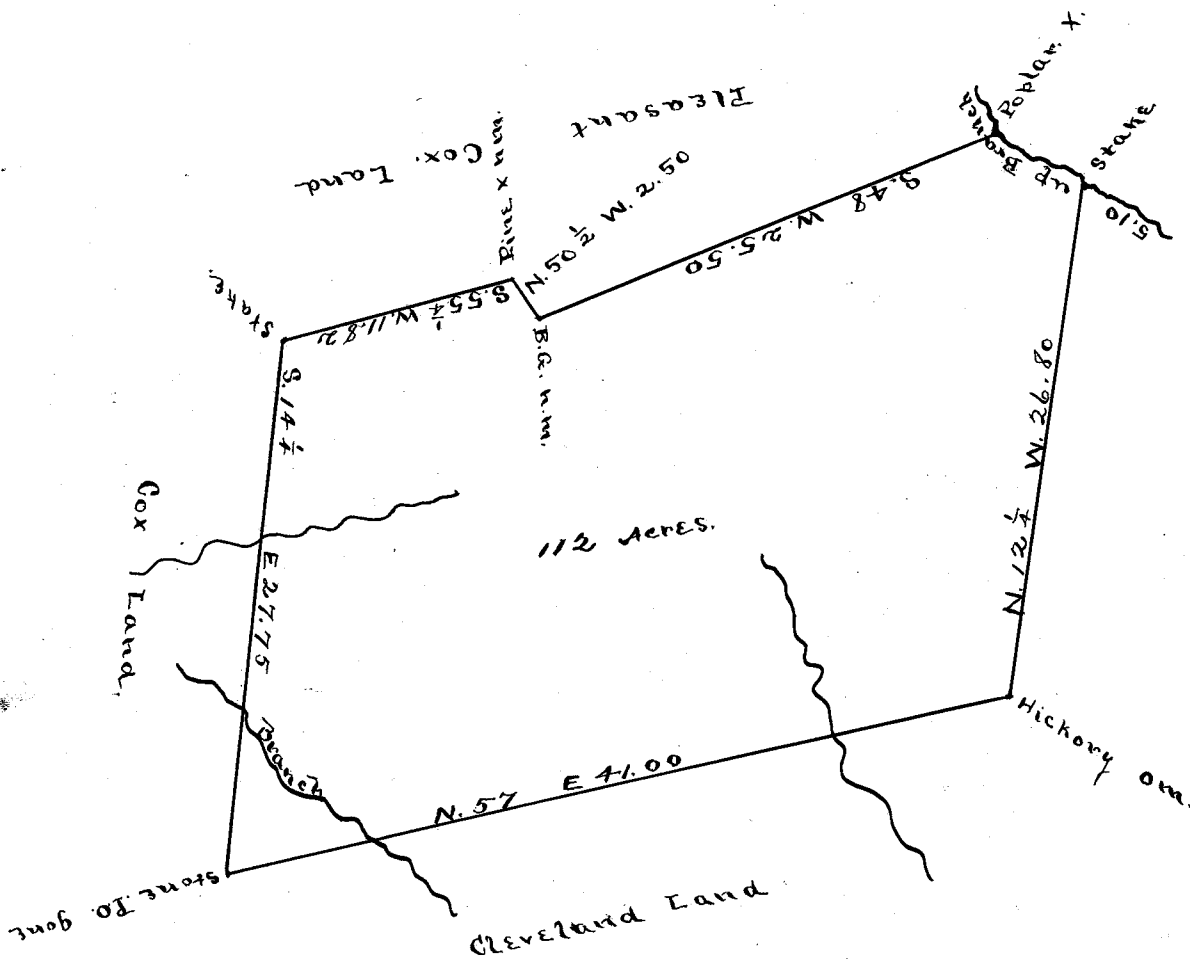
Scale 10 chs. per inch.

State of South Carolina,
Greenville County.

At the request of G.L. Walker I have made the above plats (two in one) of land, and calculated the contents, and found them to contain 52- $\frac{1}{2}$ and 42 acres, (94- $\frac{1}{2}$ in both parcels) as the above plat represents.

W.A. Adams,
Surveyor.

Recorded January 6th, 1909.
and Platted by J.B.---



Scale 10 chs. per inch.

South Carolina,
Greenville County.

I have surveyed and admeasured the above timbered land for J.R. Anderson in Cleveland Township, known as a part of Pleasant Cox's Estate and it contains (112) acres, One hundred and twelve acres and hath such shapes, marks and boundaries as the above plat represents.

Surveyed Jany 6th., 1909.

W.A. Hester,
Surveyor.

Recorded January 20th, 1909.
and Platted by J.B. --: