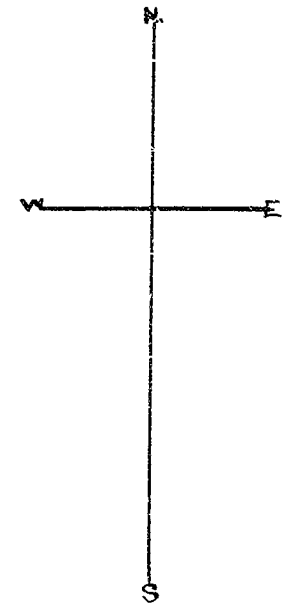
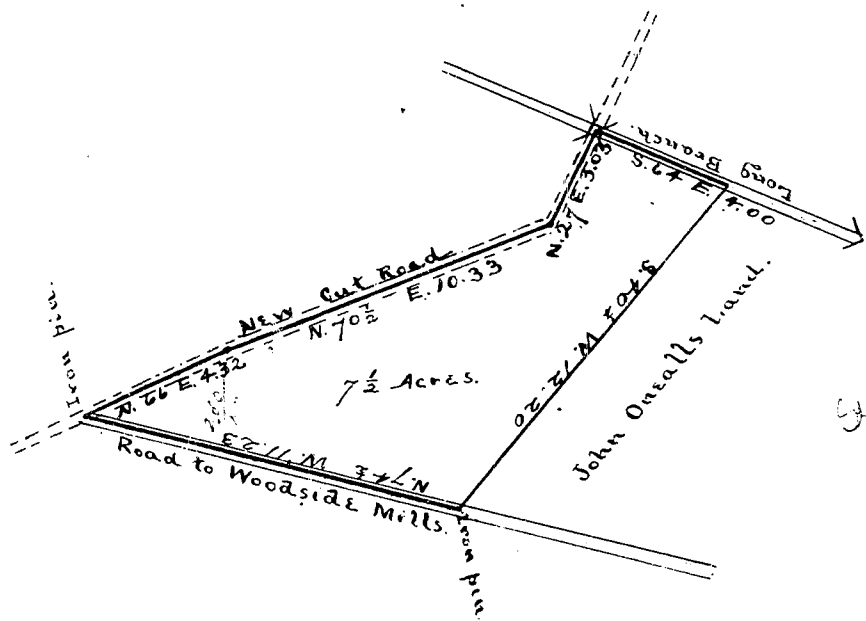


Plat Dook-A-tage L 971 A

297



" Scale of five chains per inch".

State of South Carolina
County of Greenville.

At the request of J.B. Miller, I have surveyed the above lot of land situated in State and County aforesaid near the City limits of Greenville, on Long Branch, containing seven and one-half acres, and hath such shapes, marks and bounds as represented above.

Surveyed August 4th, 1908,

W.A. Adams,
Surveyor.

Recorded December 25th, 1908
and platted by J.B.--

