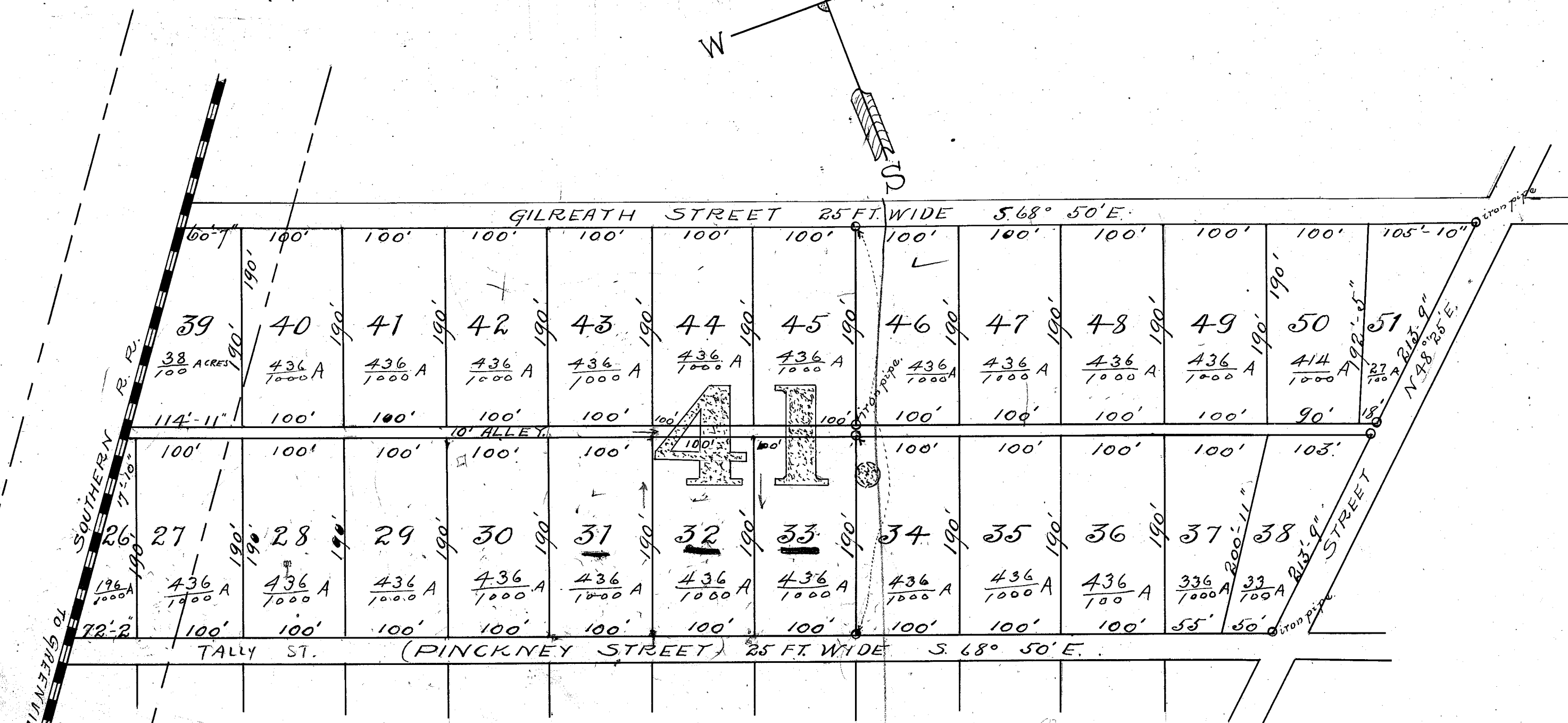
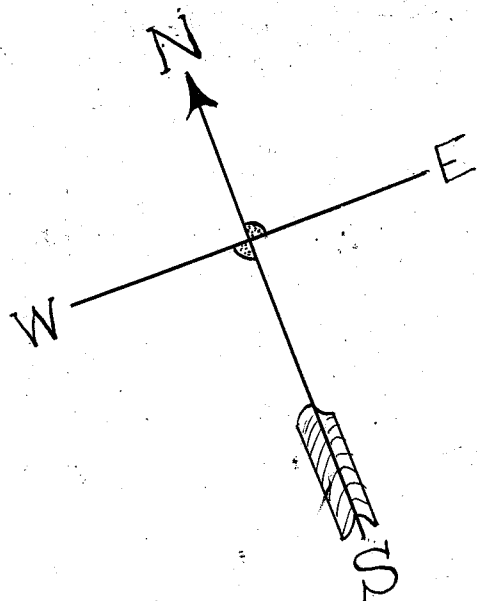


Revised April 2, 1902



MAP SHOWING SUBDIVISION INTO BUILDING LOTS  
 OF LOT 41 OF W<sup>m</sup> HUDSON'S SURVEY (NOV 15, 1897)  
 OF THE LATE H. P. HAMMETT'S PROPERTY,  
 NORTH WEST OF GREENVILLE,  
 SOUTH CAROLINA.

Scale 1 inch = 100 feet.

April 2, 1902.

See Plat HHH/826

part  
4-4-02