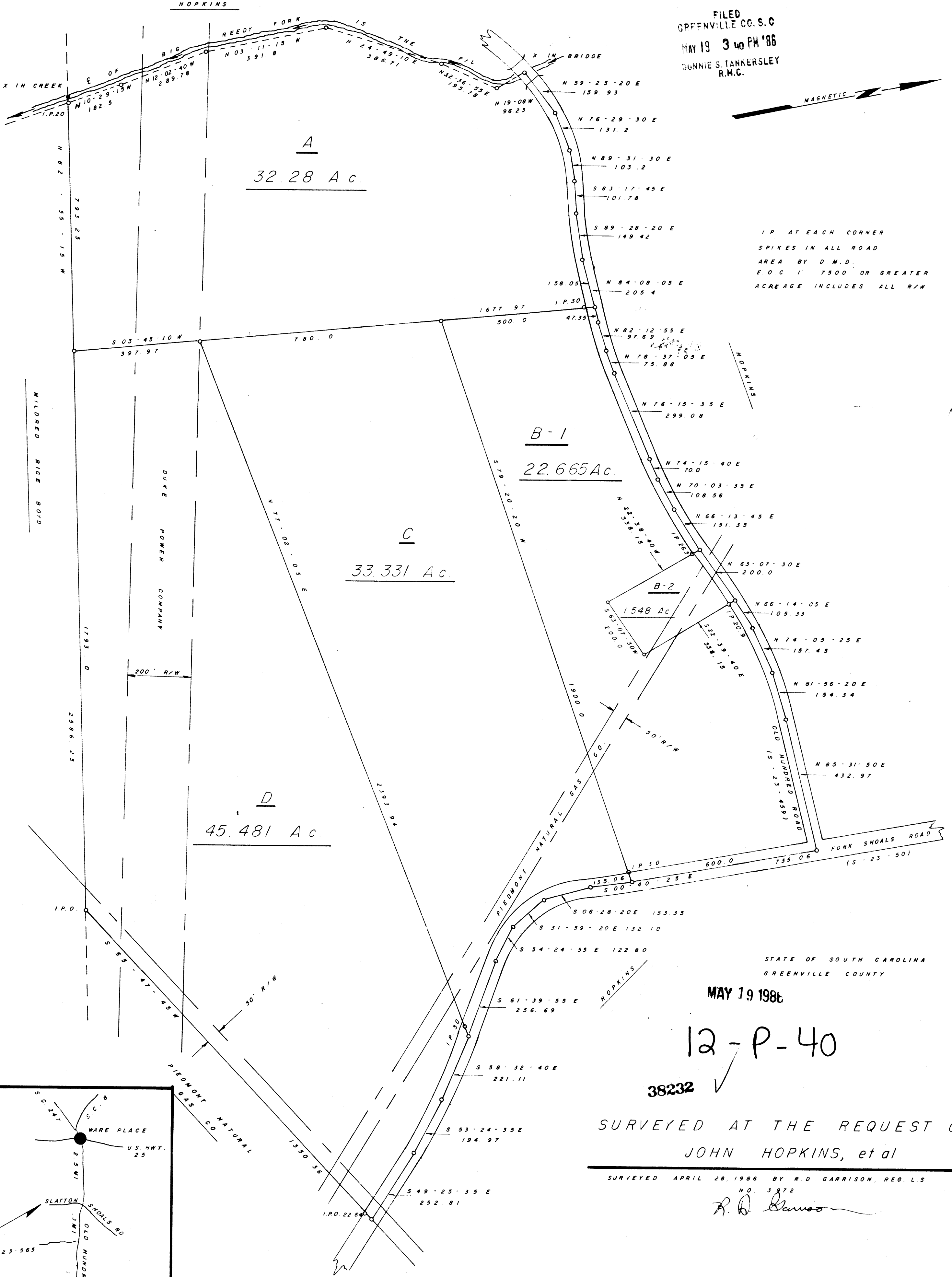


FILED  
GREENVILLE CO. S. C.  
MAY 19 3 40 PM '86  
DONNIE S. TANKERSLEY  
R.M.C.



I.P. AT EACH CORNER  
SPIKES IN ALL ROAD  
AREA BY D.M.D.  
E.O.C. 1" 7500 OR GREATER  
ACREAGE INCLUDES ALL R/W

STATE OF SOUTH CAROLINA  
GREENVILLE COUNTY

MAY 19 1986

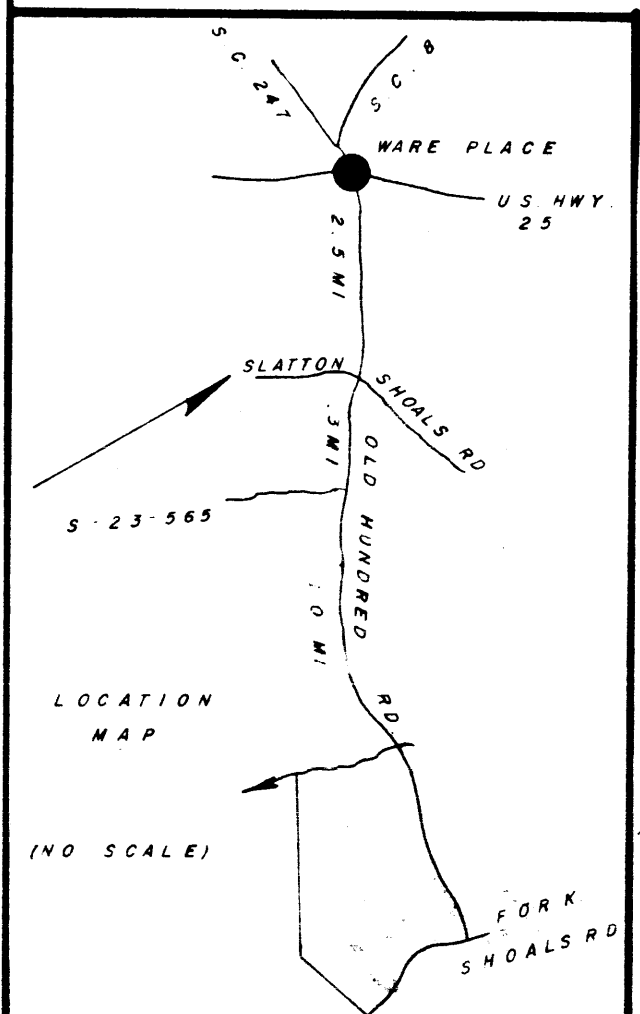
12-P-40

38232

SURVEYED AT THE REQUEST OF  
JOHN HOPKINS, et al

SURVEYED APRIL 28, 1986 BY R.D. GARRISON, REG. L.S.

NO. 3872  
*R.D. Garrison*



THIS PLAT IS NOT A SUBDIVISION  
AS DEFINED BY THE GREENVILLE  
COUNTY SUBDIVISION REGULATIONS.  
5/19/86 *Lisa A. Horne*  
Chairman, Secretary, or Director of  
Planning,  
Greenville County Planning Commission

