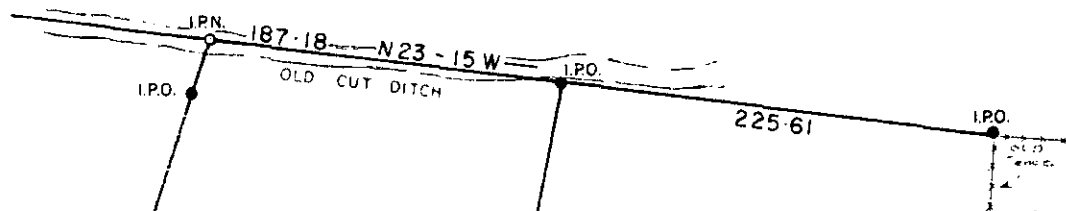
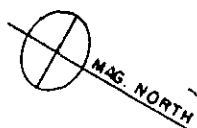


40' Public

20' Private

MICROFILMED

234 / 63, 64



TR. 3

TR. 2
7.60 AC.

TR. 1

1179.69 Tot.

S 78 - 16 W

1366.35 Tot.

N 71 - 27 E

I.P.O.

S 10 - 16 W

372.82 Tot.

BLACKBERRY

VALLEY RD.

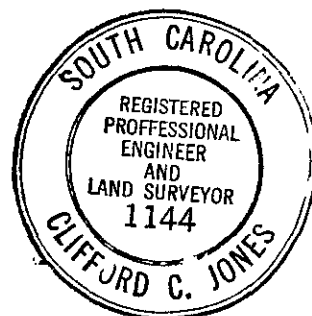
45.81 P.

403

I.P. 18'

I.P.N. 12' OFF CL.

FILED
GREENVILLE 06:08:00
DEC 23 4 53 PM '85
DUNNIE S. TANKERSLEY
R.M.G.



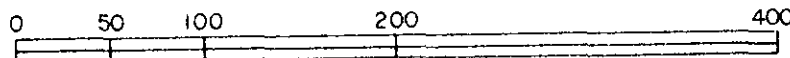
21126

12-E-61 DEC 27 1985

PROPERTY OF

STELLA B. LOOPER
GREENVILLE COUNTY, S. C.

NOV. 18, 1985 SCALE 1"=100'



BLK. BK. 509-3-1-26



JONES ENGINEERING SERVICE 1006 E. PERRY RD. G'VILLE. S. C.

500 3 11A01