

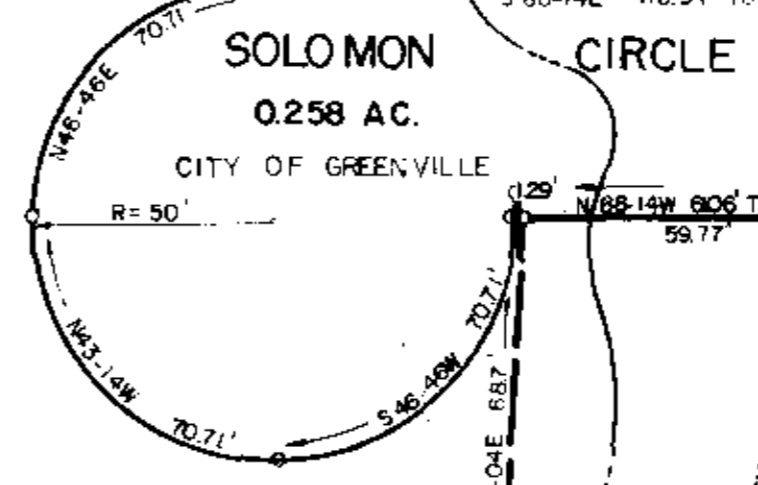
FILED
11-9-86 10:00 PM '86

GREENVILLE CITY SCHOOL DISTRICT TRUSTEES

PENDLETON MANOR, INC.

S 4.38 W 289.55'

2.613 AC.
TO ♀ CREEK



0.030 AC.

N 88-14 W 492.65' TOTAL
395.68'

97.17'

50.13'

68.81'

S 88-14 E 118.94'

104.74'

N 63-02 E 32.29'

90.81'

SOLOMON CIRCLE

0.258 AC.

CITY OF GREENVILLE

N 88-14 W 606' TOTAL

59.77'

129'

S 46-49 W 70.71'

N 4-04 E 68.7'

N 0-45 W 73.65'

N 4-04 E 68.7'

N 10-44 E 232.3'

323.11'

S 85-38 E 95.8'

S 84-11 E 362.20'

N 10-44 E 232.3'

323.11'

S 85-38 E 95.8'

N 10-44 E 232.3'

323.11'

S 85-38 E 95.8'

N 10-44 E 232.3'

323.11'

S 85-38 E 95.8'

N 10-44 E 232.3'

323.11'

S 85-38 E 95.8'

N 10-44 E 232.3'

323.11'

S 85-38 E 95.8'

N 10-44 E 232.3'

323.11'

S 85-38 E 95.8'

N 10-44 E 232.3'

323.11'

S 85-38 E 95.8'

N 10-44 E 232.3'

323.11'

S 85-38 E 95.8'

N 10-44 E 232.3'

323.11'

S 85-38 E 95.8'

N 10-44 E 232.3'

323.11'

0.437 AC. TO ♀ CREEK
ZONED R-6

8" SANITARY SEWER
8" SANITARY SEWER

CHICK SPRINGS ROAD

MH

MH

MH

MH

MH

MH

MH

MH

MH

MH

MH

MH

MH

MH

MH

MH

MH

MH

MH

MH

MH

MH

MH

MH

MH

MH

SUMMITT PLACE



PROPERTY OF
N. W. JERRY SOLOMON
 GREENVILLE COUNTY, S. C.

Scale 1" = 40' July, 1985

DALTON & NEVES CO., INC. ENGINEERS

121 MANLY STREET
GREENVILLE, S. C.

12B-33

28964

Plat Filed This 4 day of Mar 19 86
And Recorded in 12-B Page 33 at 3:48 P.M.

CERTIFICATE OF APPROVAL FOR RECORDING

"I hereby certify that the subdivision plat shown hereon has been found to comply with the Subdivision Regulations for Greenville County and that it has been approved for recording in the office of the County Register of Meane Conveyance."

March 3 1986

Lisa A. Jones

DIRECTOR OF PLANNING
GREENVILLE COUNTY PLANNING COMMISSION