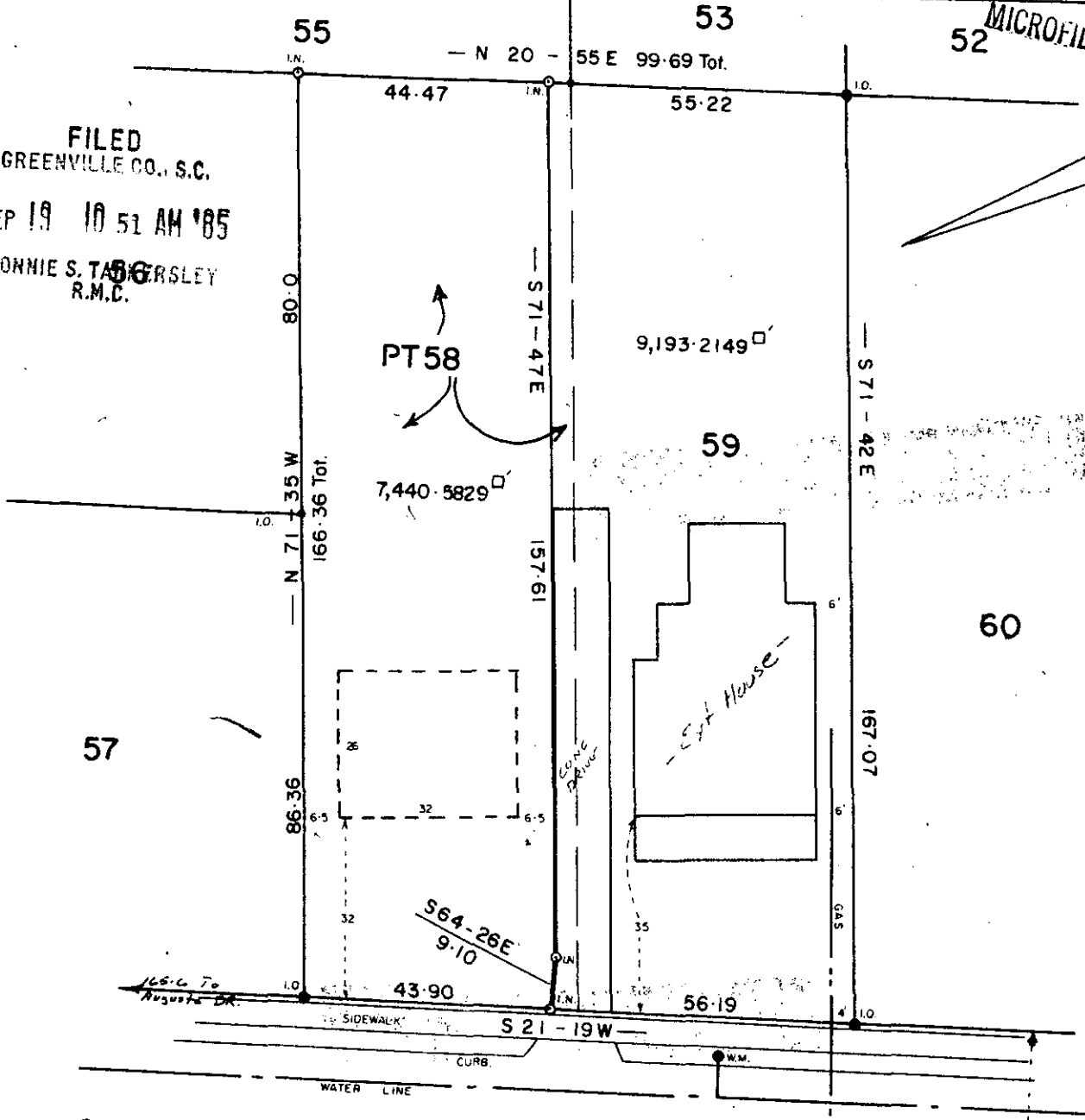


FILED
GREENVILLE CO., S.C.
SEP 19 10 51 AM '85
DONNIE S. TAYLOR
R.M.C.



57

PT 58

9,193.2149

59

60

S 64-26E
9.10

S 21-19W

TOMASSEE AVE.
SANITARY SEWER
PIEDMONT N. GAS

9673

THIS PLAT IS NOT A SUBDIVISION
AS DEFINED BY THE OR CITY
COUNTY SUBDIVISION REGULATIONS.
NOTE: LOTS DO NOT LIE IN A FLOOD PLANE..
2/19/85
7.8
Chairman, Secretary, or
Planning.
REVISION of
Greenville County Planning Commission

LOTs 58 & 59

11-Y-29

CIRCLE SEP 19 1985

WARD S. STONE JR.

GREENVILLE, S. C.

SEPT. 17, 1985 SCALE 1" = 30'

