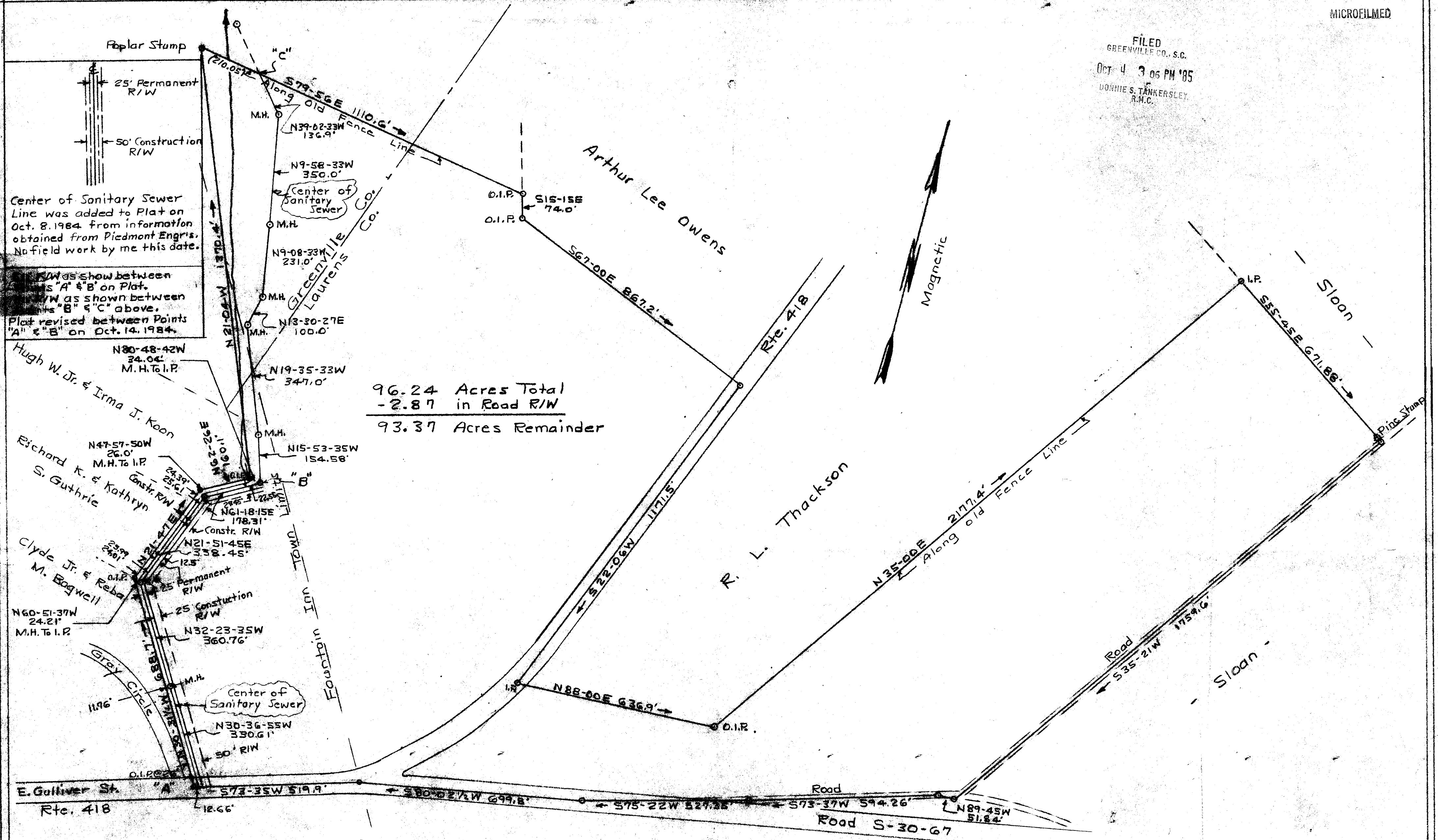


FILED
GREENVILLE CO., S.C.
OCT 4 3 06 PM '85
DONNIE S. TANKERSLEY
R.M.C.



96.24 Acres Total
- 2.87 in Road R/W
93.37 Acres Remainder

Center of Sanitary Sewer Line was added to Plat on Oct. 8, 1984 from information obtained from Piedmont Engrs. No field work by me this date.

As shown between points 'A' & 'B' on Plat.
As shown between points 'B' & 'C' above.
Plat revised between Points 'A' & 'B' on Oct. 14, 1984.

88.34 Acres ± Laurens County
7.90 " ± Greenville "
96.24 Acres Total

11.70 Acres ± in Fountain Inn Town Limits

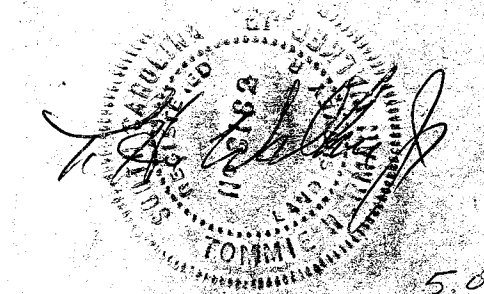
Note: Plat was revised between Points 'A' & 'B' on Aug. 30, 1985 To show change in Sanitary Sewer line. Information was obtained from Piedmont Engineers. No field work by me.

PROPERTY OF
THOMAS W. EDWARDS
GREENVILLE - LAURENS CO'S.

STATE OF S. C.
Scale 1" = 200' July 19, 1980
T.H. Walker Jr. Reg. L. S. 2182
300 Maple Dr. Mauldin, S. C.

11871
11-X-38 ✓

OCT 4 1985



5,000 OF 95
T.H. Walker Jr.