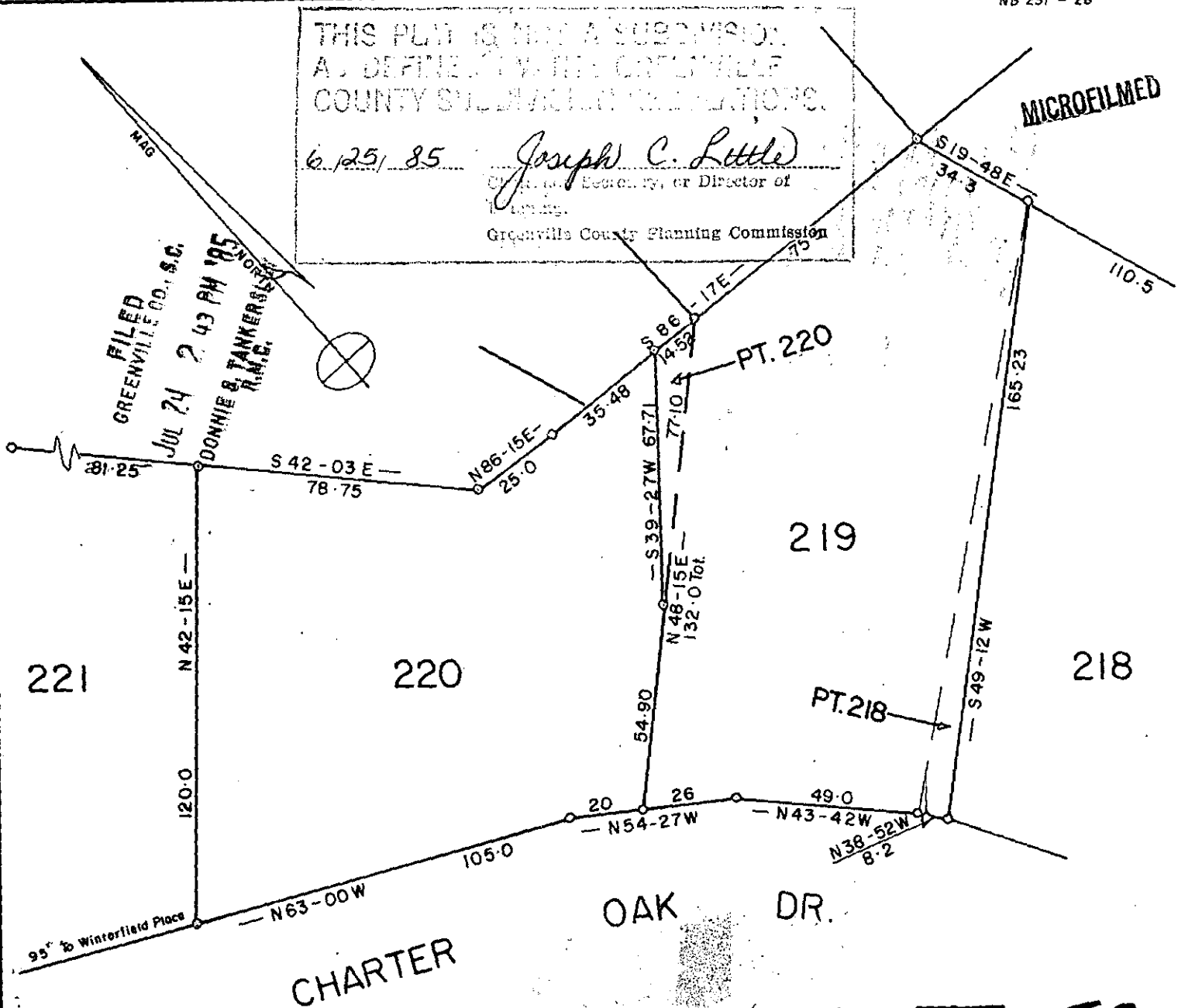


THIS PLAN IS MADE A SUBMISSION  
AS DEFINED BY THE GREENVILLE  
COUNTY SUBDIVISION REGULATIONS.

6.25.85 *Joseph C. Little*  
City Engineer, or Director of  
Planning.  
Greenville County Planning Commission

MICROFILMED

FILED  
GREENVILLE CO., S.C.  
JUL 24 2 43 PM '85  
DONNIE B. TANKERSLEY  
R.M.C.

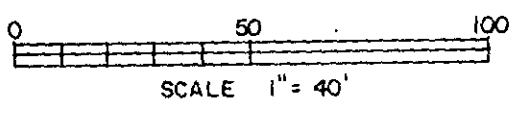


CHARTER OAK DR.

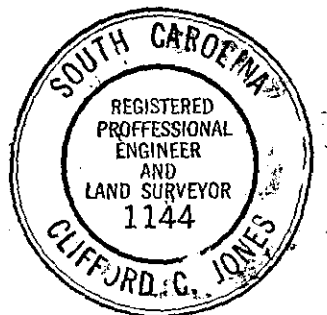
2643 ✓ 11-T-59

REVISION OF LOTS JUL 24 1985  
219 & 220  
PEPPERTREE SEC.2  
GREENVILLE COUNTY, S. C.

MAR. - 14 - 1985



NOTE: SEE PLAT BK. 4X-3, 5A-52, DEED 976-659



2 JUN 25 85 379