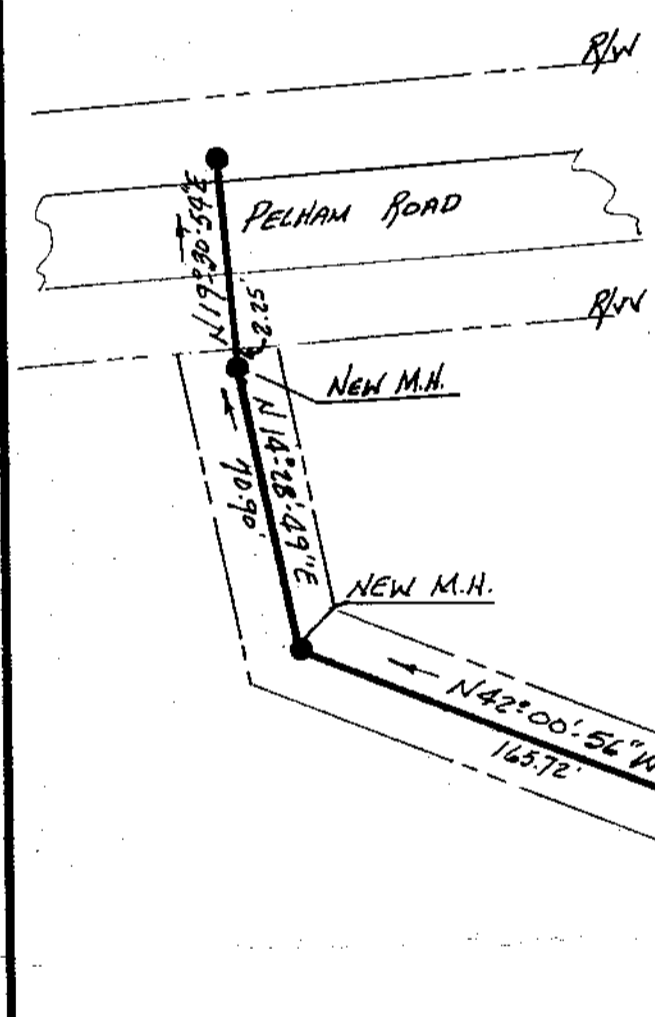
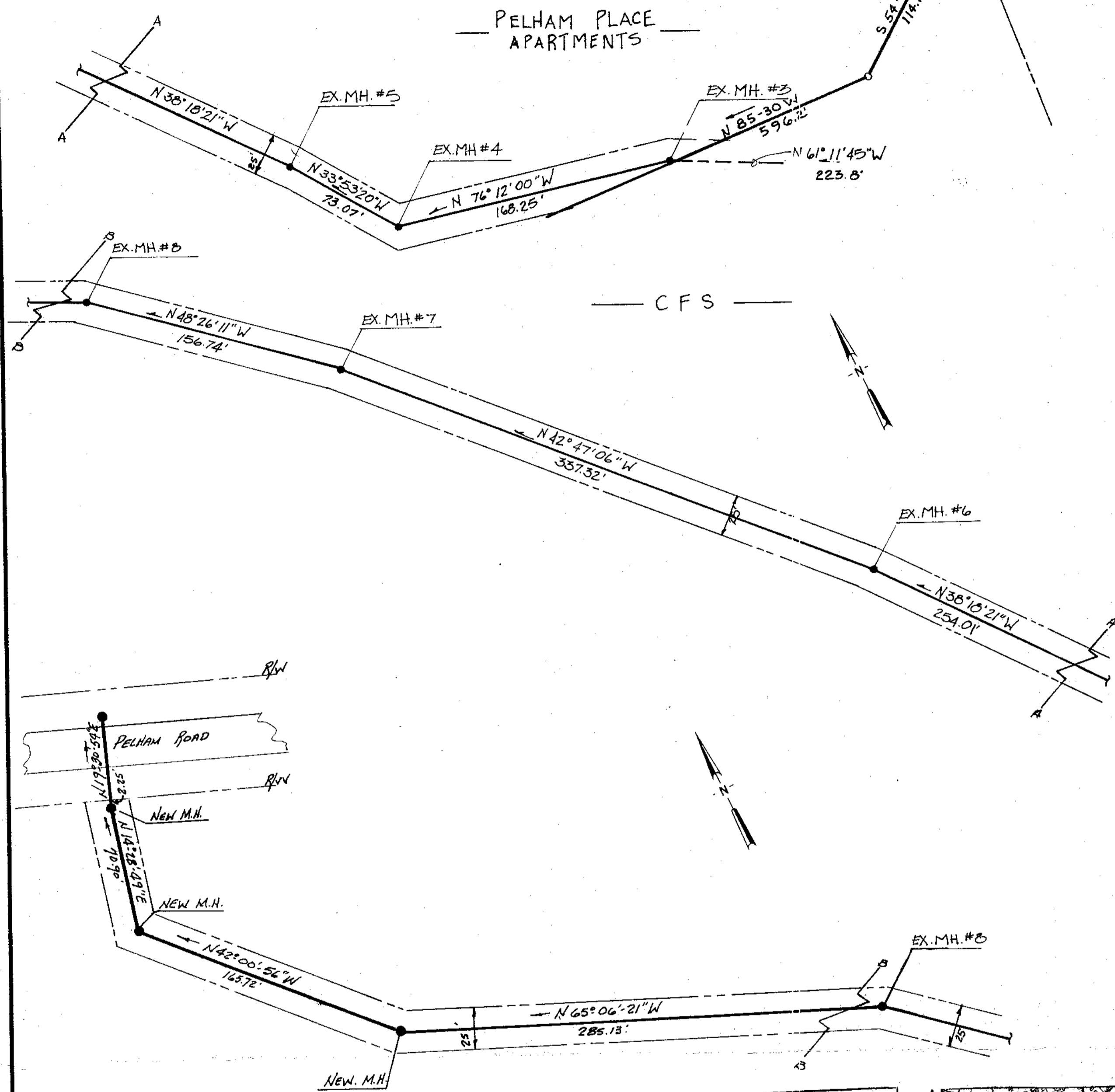


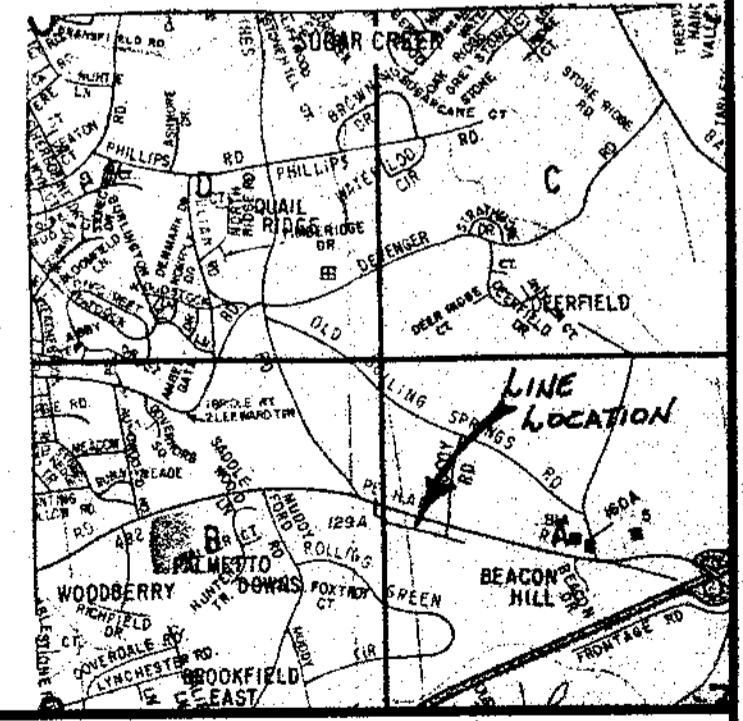
FILED
GREENVILLE CO., S.C.
AUG 15 4 45 PM '85
DONNIE S. TANKERSLEY
R.M.C.

NOTES:



THIS SEWER RIGHT OF WAY
LIES WITHIN THE PROPERTY
OF PELHAM PLACE APTS.

THIS PLAT IS NOT A SUBDIVISION
AS DEFINED BY THE GREENVILLE
COUNTY SUBDIVISION REGULATIONS.
8.15.1985 *John H. Williams*
Chairman, Secretary/Director of
Planning,
Greenville County Planning Commission



AUG 15 1985

11P-84

5460 ✓

Thur M. Amick 4032
SURVEYOR'S SIGNATURE S.C. REG. NO.

| | | | | |
|----------|---------|-----|-------------------|------|
| 1 | 2/22/85 | TMA | ISSUED FOR REVIEW | |
| REV. | DATE | BY | DESCRIPTION | APP. |
| REVISION | | | | |



**SANITARY SEWER LINE
EASEMENT**
PELHAM PLACE APARTMENTS
GREENVILLE COUNTY, SOUTH CAROLINA

enwright associates, inc.
engineers planners surveyors
GREENVILLE, SOUTH CAROLINA

4-6-B
DRAWN
9-4-84
DATE

DESIGN
1"=50'
SCALE

CHECK
FILE
MDC-SSB
DWG. NO.