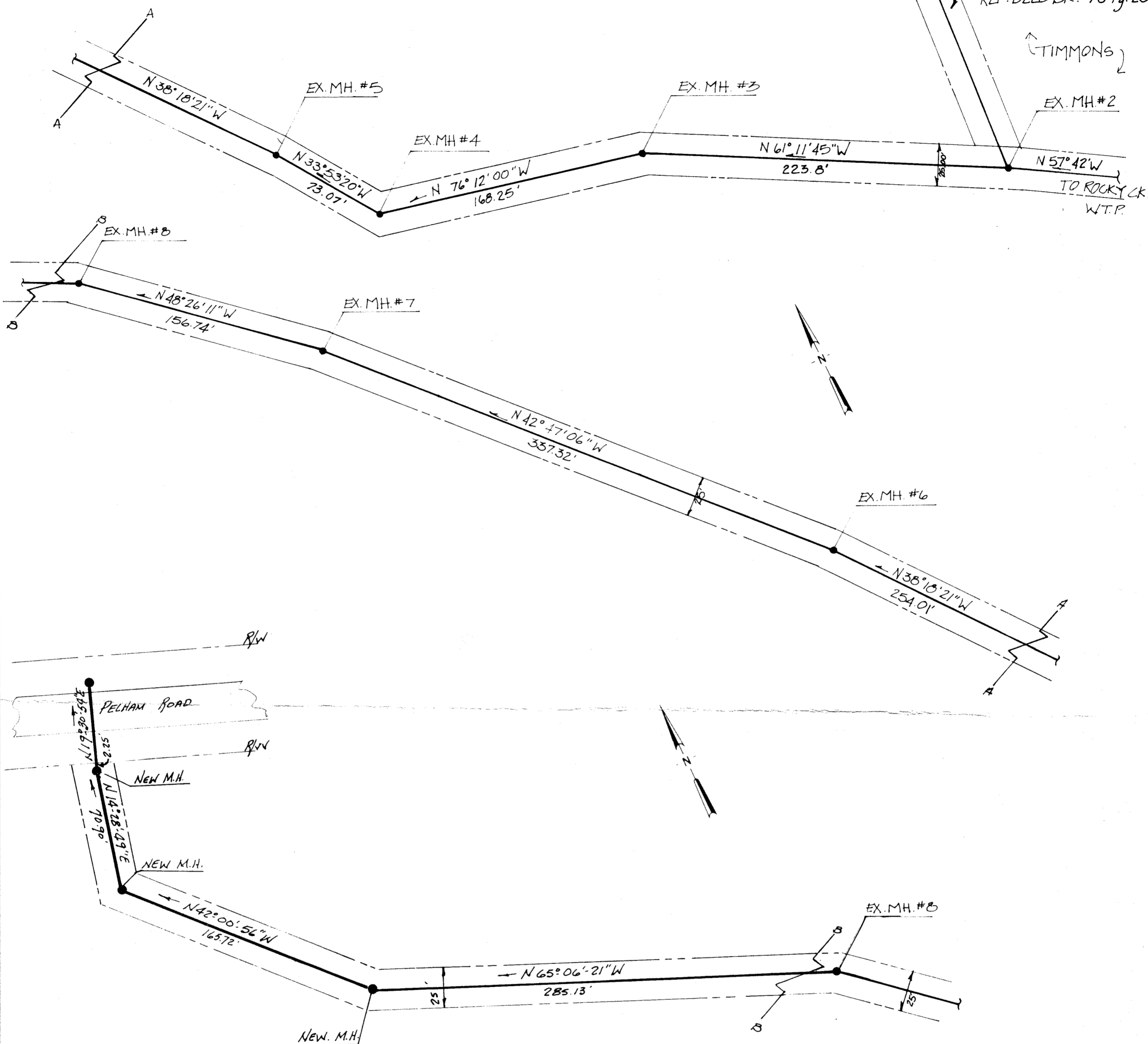


FILED
GREENVILLE CO. S.C.
MAR 21 3 14 PM '85
DONNIE S. TANKERSLEY
R.M.C.

NOTES:

TO PELHAM RD
THIS LINE AND R/W DEEDED TO METRO S.D. MAY 1979 REF. DEED BK. 76 Pg. 23



THIS SEWER RIGHT OF WAY LIES WITHIN THE PROPERTY OF PELHAM PLACE ARTS.

THIS PLAT IS NOT A SUBDIVISION AS DEFINED BY THE GREENVILLE COUNTY SUBDIVISION REGULATIONS.
3/21/85 Joseph C. Little
Chairman, Secretary, or Director of Planning.
Greenville County Planning Commission

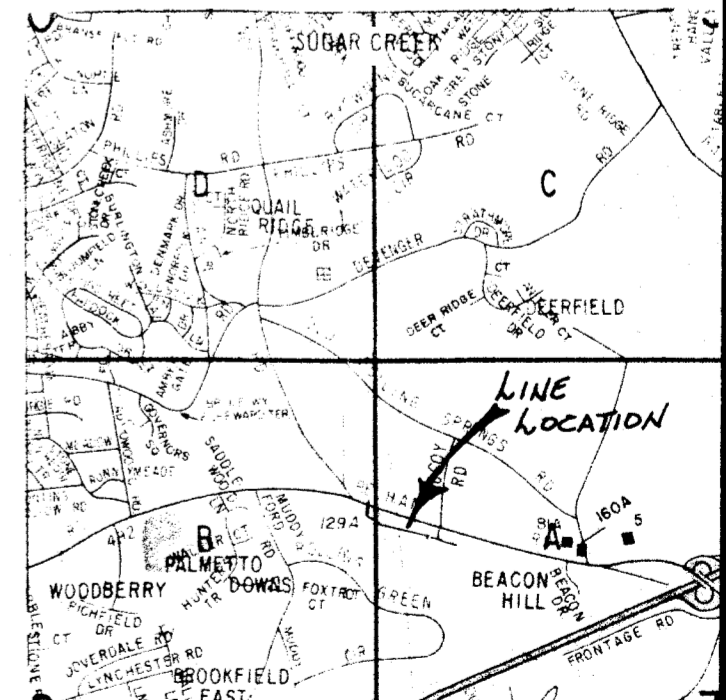
27793

11-G-49

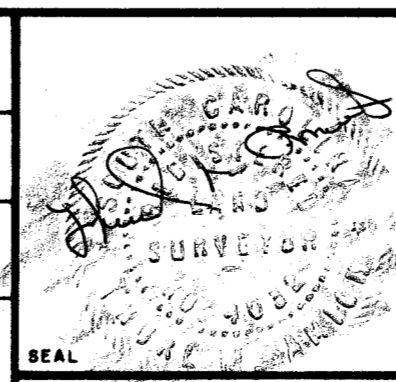
PRINTED

MAR 14 1985

ENWRIGHT ASSOCIATES



REV.	DATE	BY	DESCRIPTION	APP.
1	2/22/85	TMA	ISSUED FOR REVIEW	
REVISION				



SANITARY SEWER LINE EASEMENT
PELHAM PLACE APARTMENTS
GREENVILLE COUNTY, SOUTH CAROLINA

enwright associates, inc.
engineers planners surveyors
GREENVILLE, SOUTH CAROLINA

4-6-85 DRAWN
9-4-84 DATE
1"=50' SCALE
MDC-SSB DWG. NO.