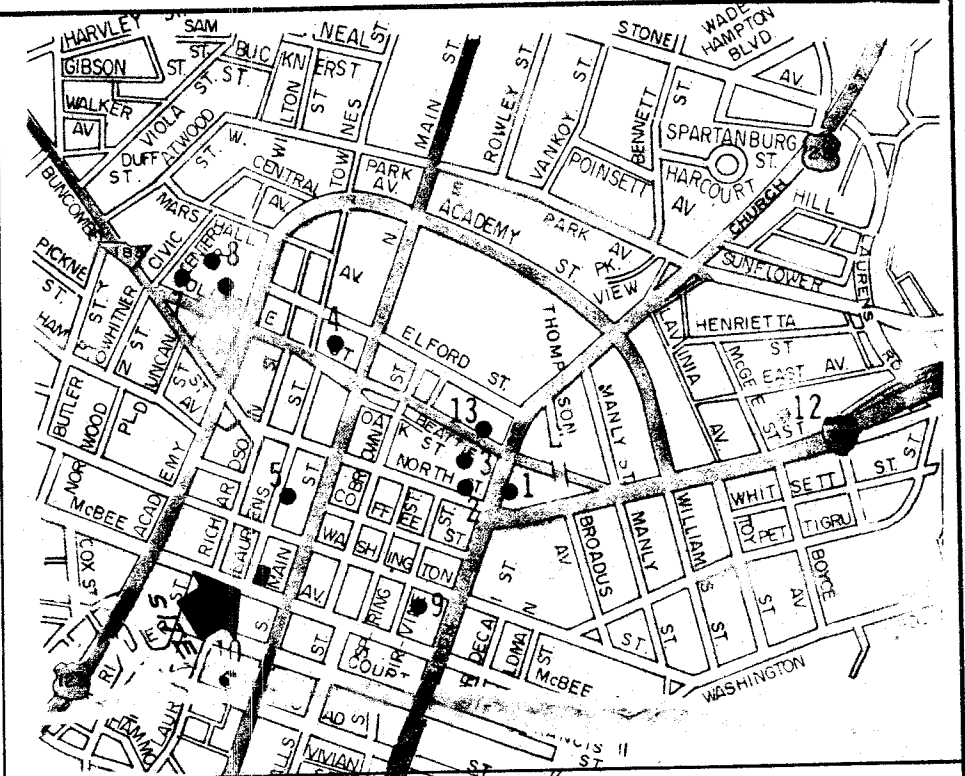
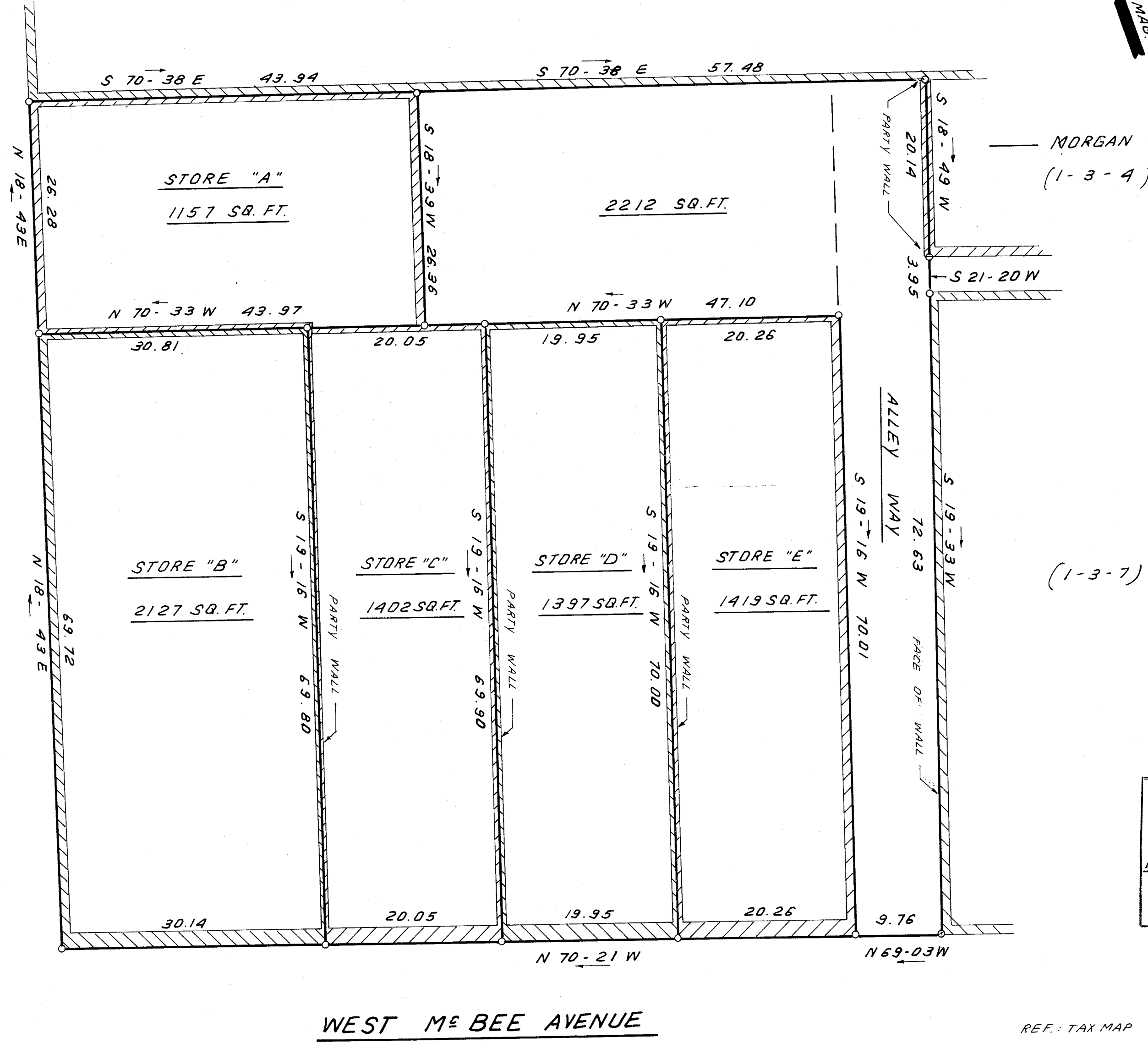
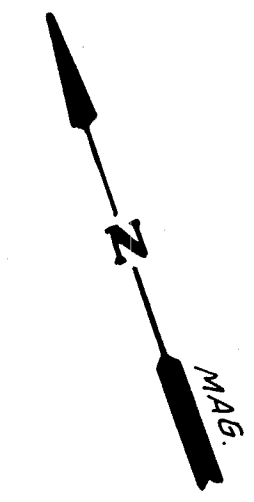


HARRISON PROPERTIES  
A S.C. GENERAL PARTNERSHIP



LOCATION MAP



MORGAN  
(1-3-4)

(1-3-7)

SOUTH LAURENS STREET

WEST M<sup>CBEE</sup> AVENUE

THIS PLAT IS NOT A SUBDIVISION  
AS DEFINED BY THE GREENVILLE  
COUNTY SUBDIVISION REGULATIONS.  
12/31/84 *Joseph C. Little*  
Chairman, Secretary, or Director of  
Planning.  
Greenville County Planning Commission

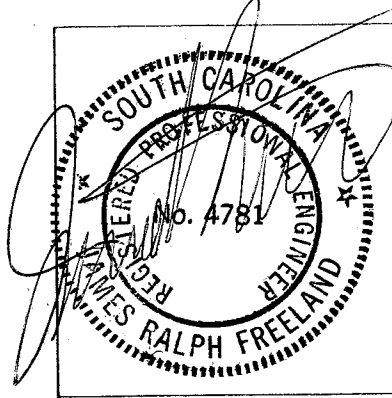
19996 ✓

REF: TAX MAP 1-3-8

10-2-87

JAN 4 1985

FILED  
GREENVILLE, S.C.  
JAN 11 9 15 AM '85  
DONNIE S. FLETCHER



STATE OF SOUTH CAROLINA  
GREENVILLE COUNTY

SURVEY FOR  
BACKYARD GENERAL PARTNERSHIP

FREELAND & ASSOCIATES  
Engineers • Land Surveyors  
GREENVILLE, S.C.

SURVEY	J.E.C.
DRAWN	B.R.
CHECK	
SCALE	1" = 10'
DATE	12-19-84
DWG. NO.	12,245

