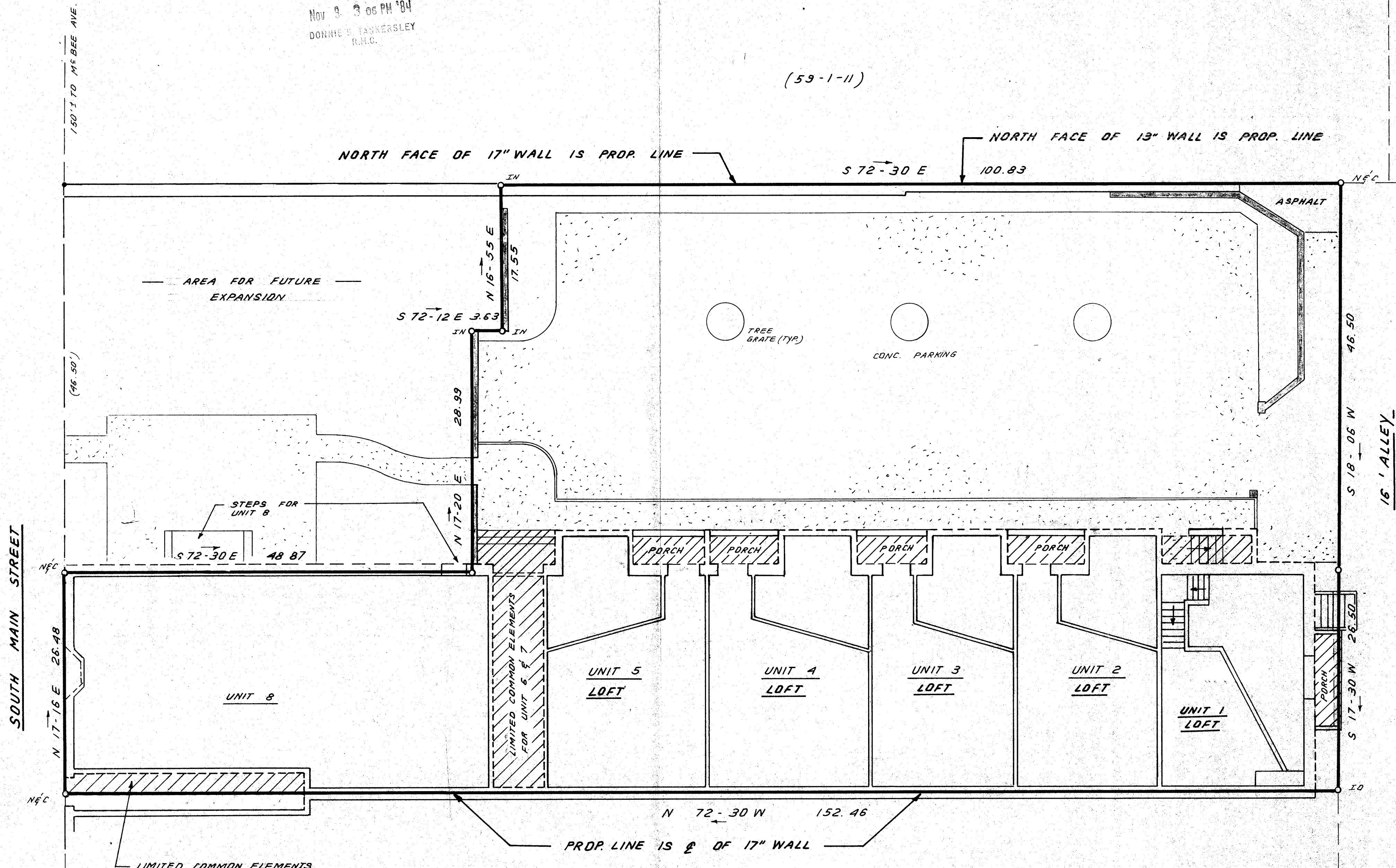


FILED
GREENVILLE CO. S.C.
Nov 9 3 06 PM '84
DONHEE & TANKERSLEY
R.M.C.

(59-1-11)

(59-1-1)



SOUTH MAIN STREET

16' ALLEY

LEGEND:
 --- COMMON ELEMENTS
 — UNIT BOUNDARY
 ▨ LIMITED COMMON ELEMENTS

CARPENTERS BROS. N/F

10-2-45

14285A

THIS PLAT IS NOT A SUBDIVISION
AS DEFINED BY THE GREENVILLE
COUNTY SUBDIVISION REGULATIONS.
11.9.1984 *John J. Weirup*
Chairman, Secretary, or Director of
Planning,
Greenville County Planning Commission

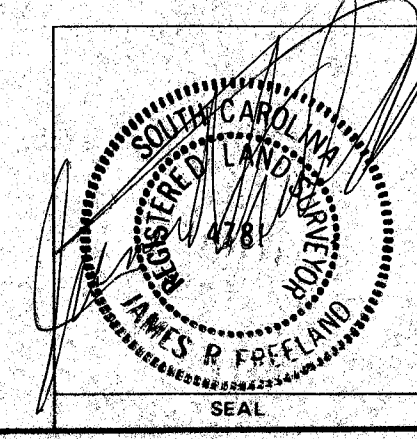


EXHIBIT "B"
 STATE OF SOUTH CAROLINA
 GREENVILLE COUNTY
 COURT SQUARE
 HORIZONTAL PROPERTY REGIME
 FIRST FLOOR LOFT
 UNIT 6; 7

FREELAND & ASSOCIATES Engineers & Land Surveyors GREENVILLE S.C.
SURVEY J.E.C.
DRAWN B.R.
CHECK
SCALE 1/8" = 1'-0"
DATE 10-16-84
DWG. NO. 11,902-B

