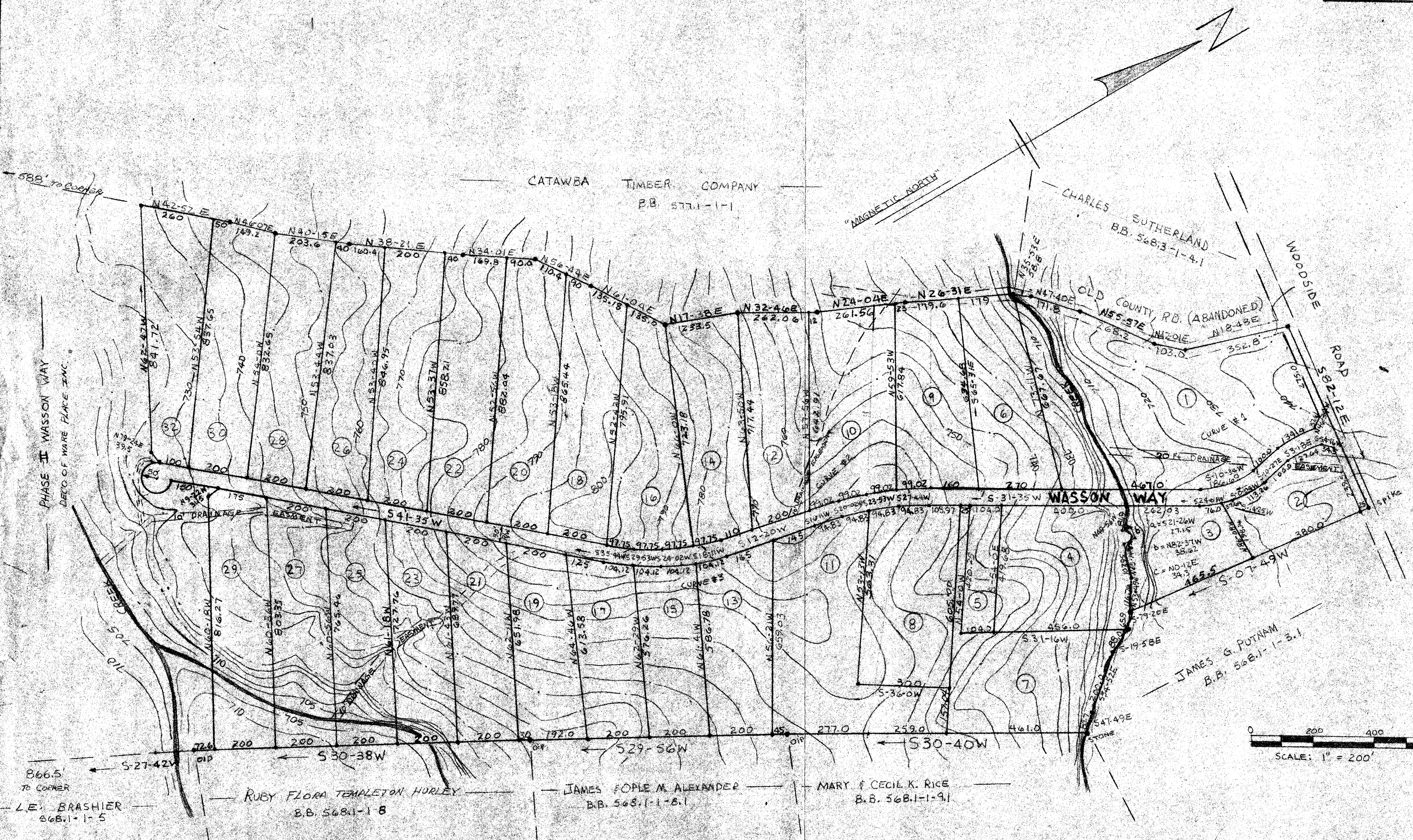
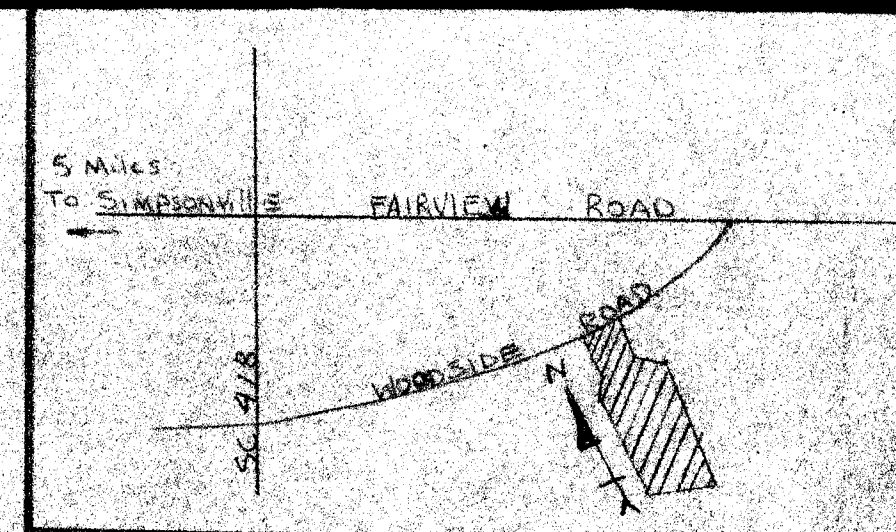


FILED
GREENVILLE CO. S.C.
OCT 23 9 24 AM '84
DONNIE S. ANKERSLEY
R.M.C.



NOTE: THERE IS A 20 FT. DRAINAGE EASEMENT AT ALL CREEKS 10' TO EACH SIDE OF CL

OCT 23 1984

12260A

WASSON WAY

10Z-24

OWNED AND DEVELOPED BY DECO OF WARE PLACE INC.
LOCATED IN GREENVILLE COUNTY NEAR SIMPSONVILLE
A PORTION OF PROPERTY RECORDED IN BLOCKBOOK 5683-1-5

LOT NO.	ACREAGE	LOT NO.	ACREAGE
1	10.17	17	2.67
2	2.10	18	3.90
3	2.36	19	3.01
4	4.06	20	3.98
5	1.10	21	3.03
6	3.30	22	4.08
7	4.16	23	3.21
8	4.0	24	3.90
9	3.26	25	3.38
10	4.02	26	3.85
11	6.0	27	3.56
12	3.53	28	3.85
13	3.25	29	3.73
14	3.61	30	3.85
15	2.77	31	FUTURE
16	3.58	32	3.68

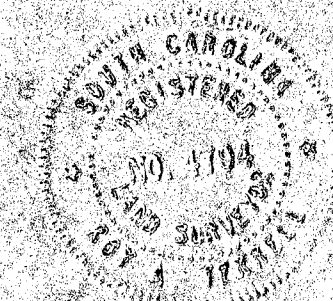
LEGEND

IP	IRON PIN
R/W	RIGHT OF WAY
JTB	EXISTING CONTOUR
⑤	LOT NUMBER
OIP	OLD IRON PIN

CURVE DATA

CURVE 1:	
A =	42° 02'
T =	109.67
R =	285.50
L =	208.30
D° =	20° 10.3'
CURVE 2:	
A =	19° 15'
T =	195.76
R =	1154.35
L =	387.71
D° =	4° 57' 54"
CURVE 3:	
A =	29° 15'
T =	206.52
R =	791.43
L =	403.76
D° =	7° 14' 39"

Steve Terrell
STEVE TERRELL and ASSOCIATES
LULA, GA.



Party Chief - Steve Terrell