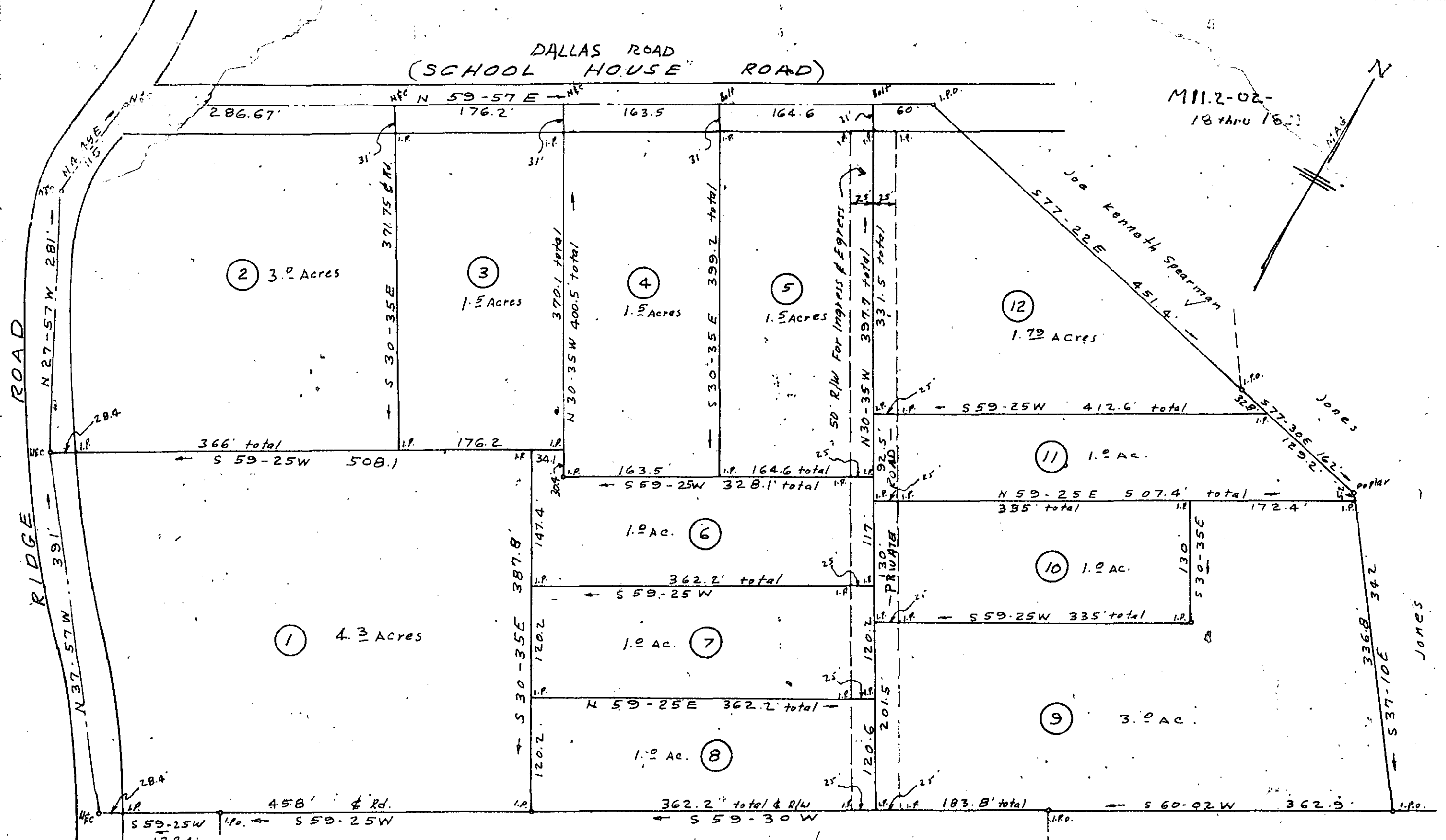


DALLAS ROAD  
(SCHOOL HOUSE ROAD)

M11.2-02-  
18 thru 16-2



1 4.3 Acres

2 3.0 Acres

3 1.5 Acres

4 1.5 Acres

5 1.5 Acres

12 1.79 Acres

11 1.0 Ac.

10 1.0 Ac.

1.0 Ac. 6

1.0 Ac. 7

1.0 Ac. 8

9 3.0 Ac.

REFERENCE PLAT

This is not a subdivision. This plat is for reference purposes only and is not to be used to create new lots or roads.

*John H. [Signature]* 2/27/84

Central Realty Corp. Subdivision

10-X-95 13543

ESTATE OF  
MARY CURETON  
NEAR GREENVILLE S.C.

NOV 2 1984

SCALE 1" = 100'

NOV. 1970

C.O. Riddle - Reg. L.S. 1347

3 NO. 284 570

150-714

NOV 2 10 55 AM '84  
GREENVILLE S.C.  
FILED

F.B. F-70 8.68

MICROFILMED