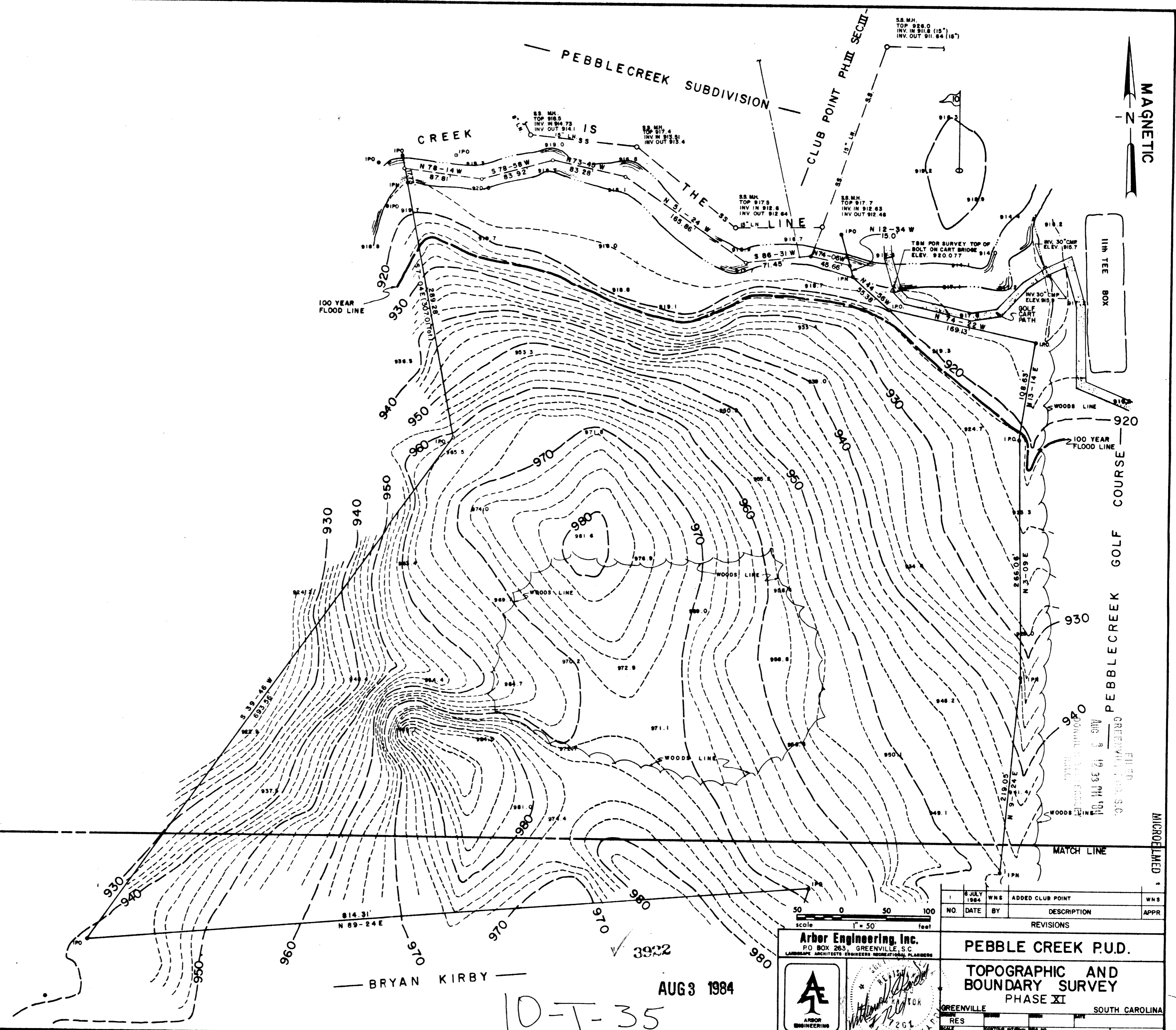


NOTES:
 1. ALL FLOOD PLAIN INFORMATION SUPPLIED BY U.S. ARMY CORPS OF ENGINEERS.
 2. NO TREE REMOVAL SHALL BE DONE IN FLOOD PLAIN AREA ON THIS PROPERTY BEHIND THE 10TH GREEN EXCEPT AS APPROVED BY PEBBLE CREEK COUNTRY CLUB AND PEBBLE CREEK DEVELOPMENT, INC.

82049



Arbor Engineering, Inc.
 PO BOX 263, GREENVILLE, S.C.
 LANDSCAPE ARCHITECTS ENGINEERS HOODS/PLANNERS

| NO. | DATE | BY | DESCRIPTION | APPR. |
|-----------|-------------|-----|------------------|-------|
| 1 | 8 JULY 1984 | WNS | ADDED CLUB POINT | WNS |
| REVISIONS | | | | |

PEBBLE CREEK P.U.D.
TOPOGRAPHIC AND BOUNDARY SURVEY
PHASE XI

GREENVILLE SOUTH CAROLINA
 RES
 SCALE 1"=50'
 SHEET 2 OF 2 82049

MICROFILMED