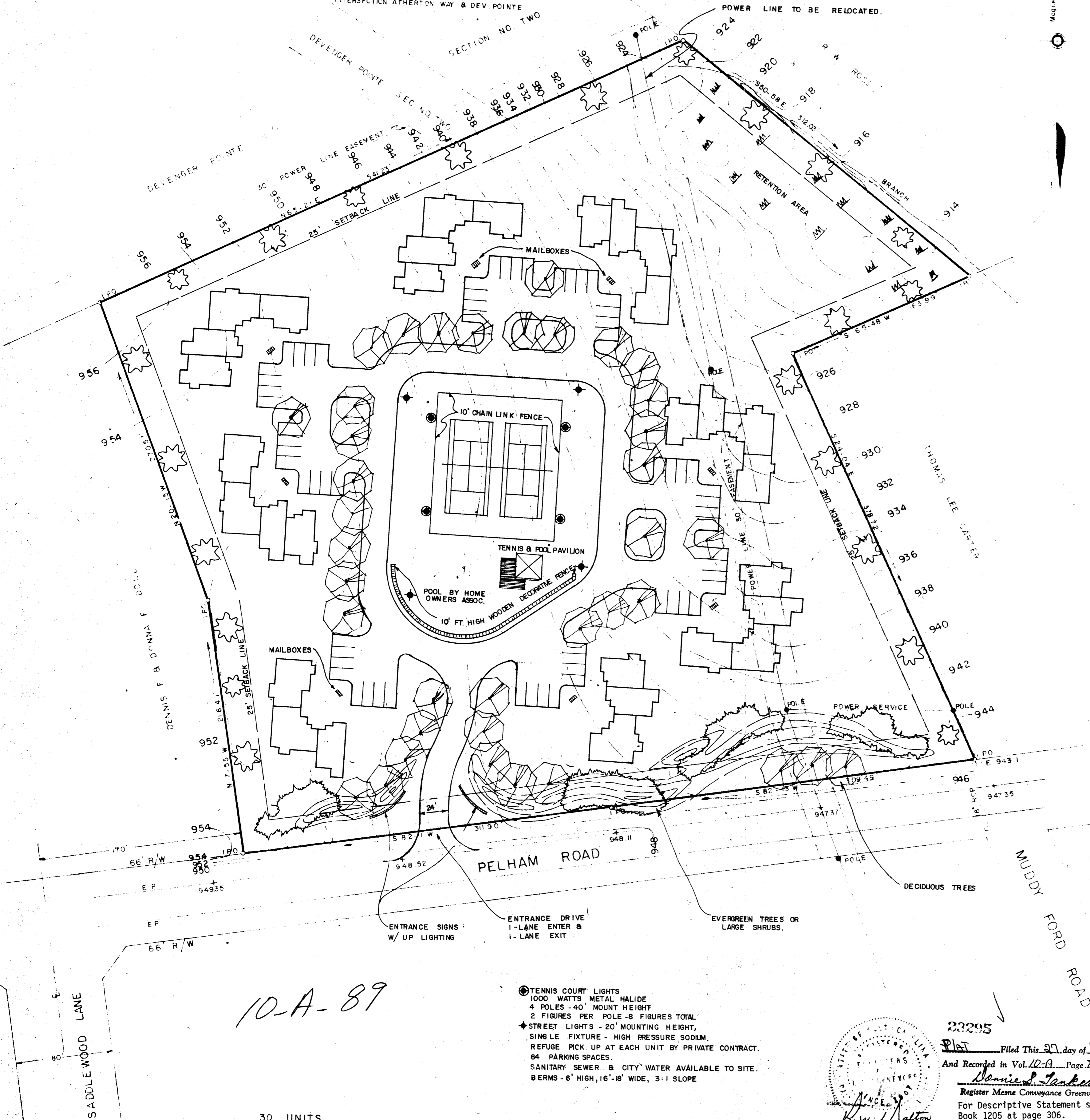


FILED
GREENVILLE CO. S. C.
JAN 27 3 18 PM '84
DUNNIE S. TAMBERSLEY
R.M.C.

NOTE:
BM TOP MH. ELEV. 951.69,
SECTION TWO DEVENGER POINTE
INTERSECTION ATHERTON WAY & DEV. POINTE



10-A-89

- TENNIS COURT LIGHTS
1000 WATTS METAL HALIDE
4 POLES - 40' MOUNT HEIGHT
2 FIGURES PER POLE - 8 FIGURES TOTAL
- ◆ STREET LIGHTS - 20' MOUNTING HEIGHT,
SINGLE FIXTURE - HIGH PRESSURE SODIUM.
REFUGE PICK UP AT EACH UNIT BY PRIVATE CONTRACT.
64 PARKING SPACES.
- ◆ SANITARY SEWER & CITY WATER AVAILABLE TO SITE.
- ◆ BERMS - 6" HIGH, 16"-18" WIDE, 3:1 SLOPE



23295
Plat Filed This 27 day of Jan 19 84
And Recorded in Vol. 12-A Page 27 at 3:13 P.M.
Dunnie S. Tambersley
Register Mens Conveyance Greenville County, S. C.
For Descriptive Statement see Deed
Book 1205 at page 306.
S. C. Reg. No. 916

LOCATION MAP NOT TO SCALE

CERTIFICATE OF APPROVAL FOR RECORDING
I hereby certify that this Final Development Plan and/or Statement of Intent has been approved by the Greenville County Planning Commission for recording in the office of the County Register of Mesne Conveyance.
1-27-84 Date
James Forbes Executive Director
Greenville County Planning Commission

77A
KENSINGTON PLACE

DEE A. SMITH & WESTMINSTER COMPANY DALTON & NEVES CO.
OWNER ENGINEERS

NO. OF ACRES 8.26 RD. MILES OF NEW ROAD PRIVATE
NO. OF LOTS 0 DATE DECEMBER, 1983

ZONED PDR

SCALE 1" = 50'
50 0 50 100
3 JA 27 84 075