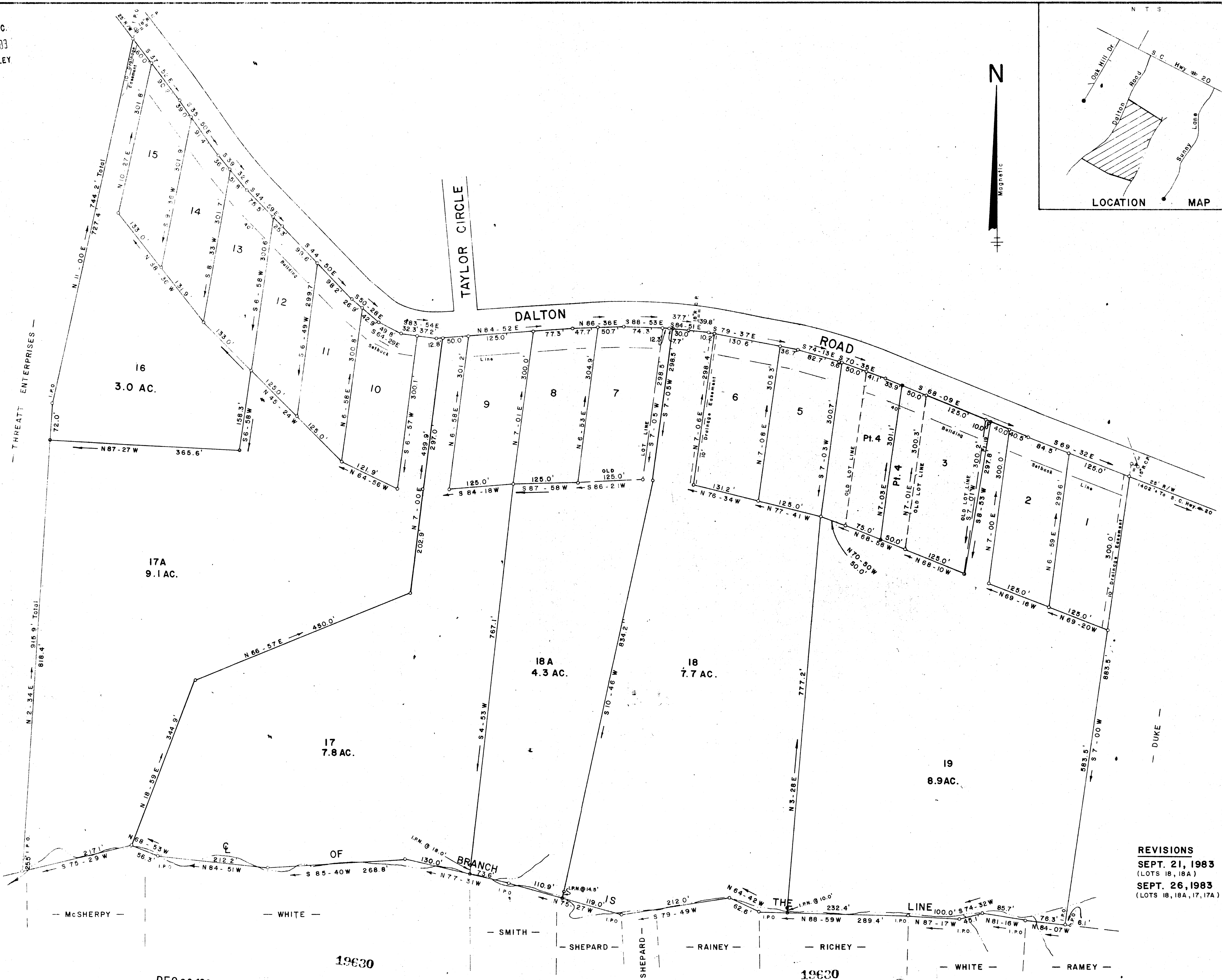
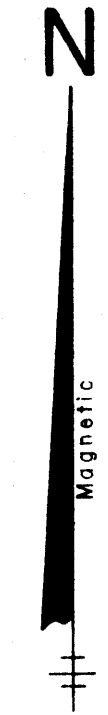
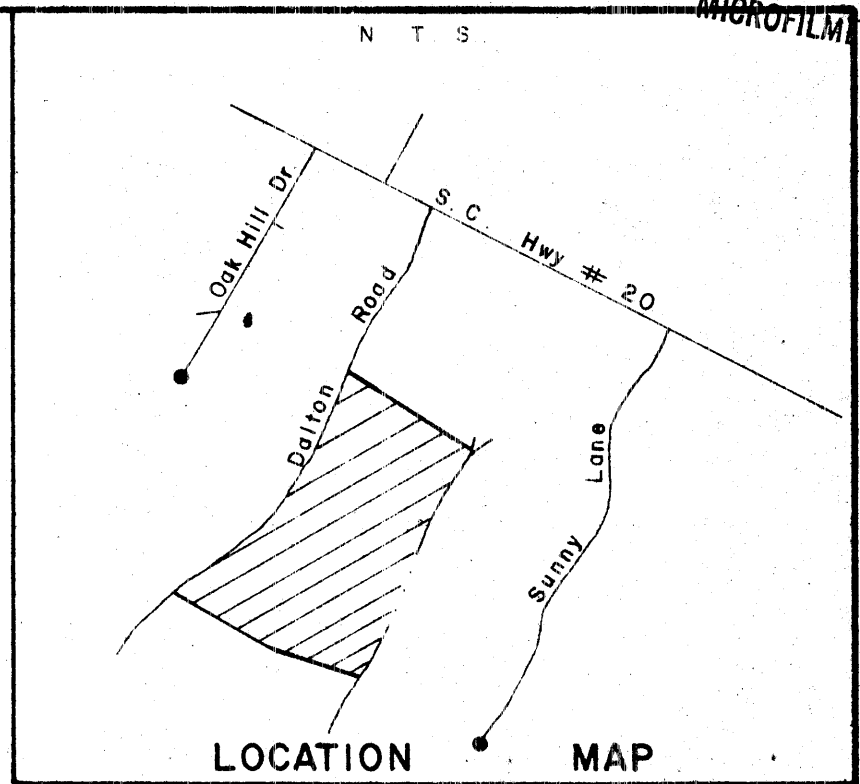


FILED
GREENVILLE CO. S.C.
DEC 20 9 13 AM '83
DUNNIE E. LANNERSLEY
R.M.C.



REVISIONS
SEPT. 21, 1983
(LOTS 18, 18A)
SEPT. 26, 1983
(LOTS 18, 18A, 17, 17A)

Note:
5' Drainage And Utility Easements
Along Each Side Of All Old Lot
Lines To Be Abandoned.

DEC 20 1983

DEC 20 1983

10A-65

10A-66

DALTON WOODS
PROPERTY OF
G. E. MANN & R. A. BAILEY
NEAR PIEDMONT GREENVILLE CO.
SOUTH CAROLINA

**THIS PLAT IS NOT A SUBDIVISION
AS DEFINED BY THE GREENVILLE
COUNTY SUBDIVISION REGULATIONS.**
12/15/83 *Stephen W. Tanner*
Chairman, Secretary, or Director of
Planning
Greenville County Planning Commission

53.0 ACRES TOTAL

Iron Pins At All Property Corners
There is a 5' Drainage And Utility
Easement On Each Side Of All Side
And Rear Lot Lines, And A 10'
Drainage Easement Along Natural
Grains.

I Hereby Certify That The Ratio Of Precision
Of The Field Surveys is 1/5000 As
Shown Hereon, And The Area Was Determined
By D.M.B. Method.
Jeffery M. Plumblee
R.L.S. No. 7881

JEFFERY M. PLUMBLEE, INC.
LAND SURVEYING

JUNE 18, 1982
REVISED JANUARY 5, 1983
(LOTS 3, 4, 16, 17, 18, 19)
REVISED SEPT. 20, 1983
(LOTS 3, 19)

