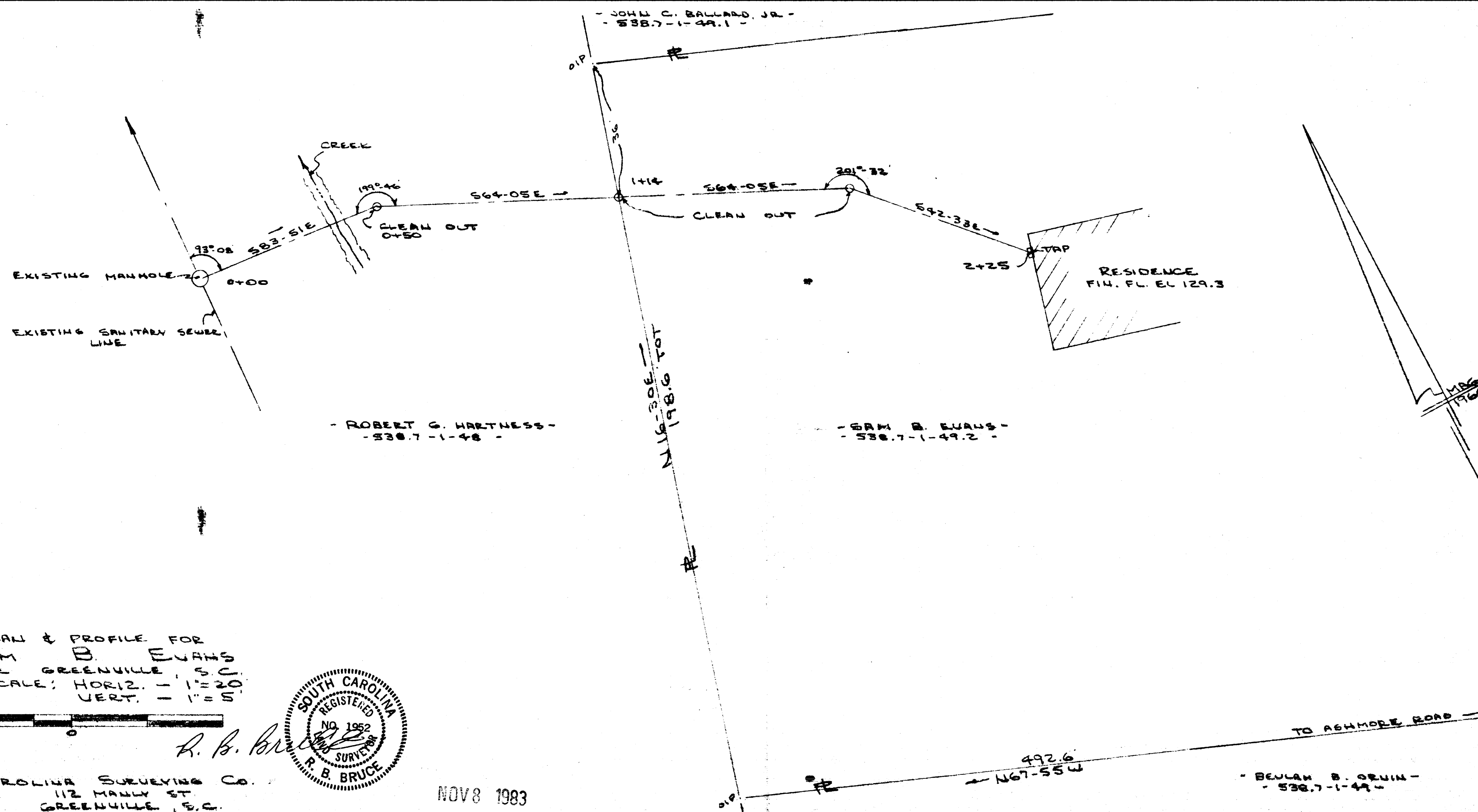


FILED
GREENVILLE CO. S.C.
Nov 8 2 45 PM '83
DUNNIE S. TANAKERSLEY
R.M.C.

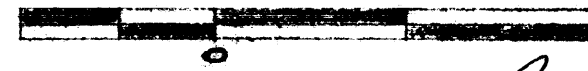


10A-39

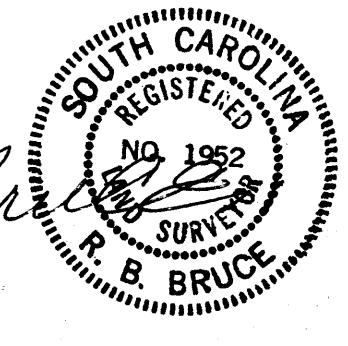
10A-40

THIS PLAT IS NOT A SUBDIVISION
AS DEFINED BY THE GREENVILLE
COUNTY SUBDIVISION REGULATIONS.
11/8/83 *F. J. Forbes*
Chairman, Secretary, or Director of
Planning,
Greenville County Planning Commission

PLAN & PROFILE FOR
SAM B. EVANS
NEAR GREENVILLE, S.C.
SCALE: HORIZ. - 1"=20'
VERT. - 1"=5'



R. B. Bruce



CAROLINA SURVEYING CO.
112 MAIN ST.
GREENVILLE, S.C.

NOV 8 1983

15175

15175

NOV 8 1983

