

MICROFILMED

PARAMONT PARK

N 64 - 32 E 300.0 N 64 - 23 E 221.0

3.32 AC.

SURVEY FOR

INTEX PRODUCTS, INC.

NEAR GREENVILLE GREENVILLE CO.

SOUTH CAROLINA

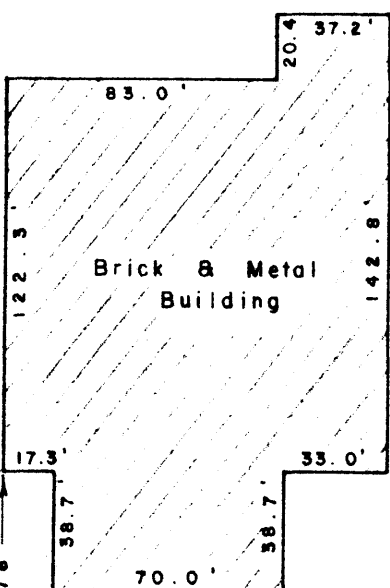
SEPTEMBER 27, 1983

B. T. BOOTLE

N 25 - 27 W 450.0'

T. C. THREATT

S 25 - 23 E 449.3'



Sanitary Sewer Line

NORTH

KING

ROAD

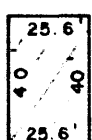
N 64 - 24 E 500.0'

M. F. WOODWARD

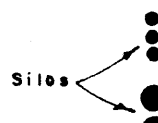
N 25 - 36 W 385.0'

S. B. MCABEE

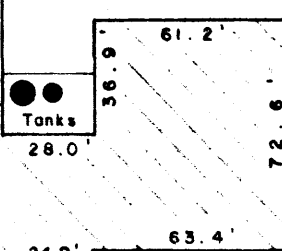
S 25 - 36 E 527.6'



Silo



Brick & Metal Building



5.13 AC.

GREENVILLE S.C.  
FILED  
SEP 28 1983  
COUNTY CLERK

THIS PLAT IS NOT A SUBDIVISION AS DEFINED BY THE GREENVILLE COUNTY SUBDIVISION REGULATIONS.

9/28/83 *F. J. Fisher*  
Chairman, Secretary, or Director of Planning  
Greenville County Planning Commission

1-85

10358

10-A-7

SEP 28 1983

WRW

W. R. WILLIAMS, JR.  
ENGR. / SURVEYOR, Inc.  
P. E. & L. S. No. 3979  
15 S. MAIN STREET  
TRAVELERS REST, S. C.  
29690

F. B. 71

SCALE: 1" = 60'



I hereby certify that the ratio of precision of the field survey is 1:75000 as shown hereon and the area was determined by the M&D method of area calculation.

*W. R. Williams*  
PE & L S No 3979

M15.5-1-7.3,7.5,10

8 28 28 83  
379  
500CI 95