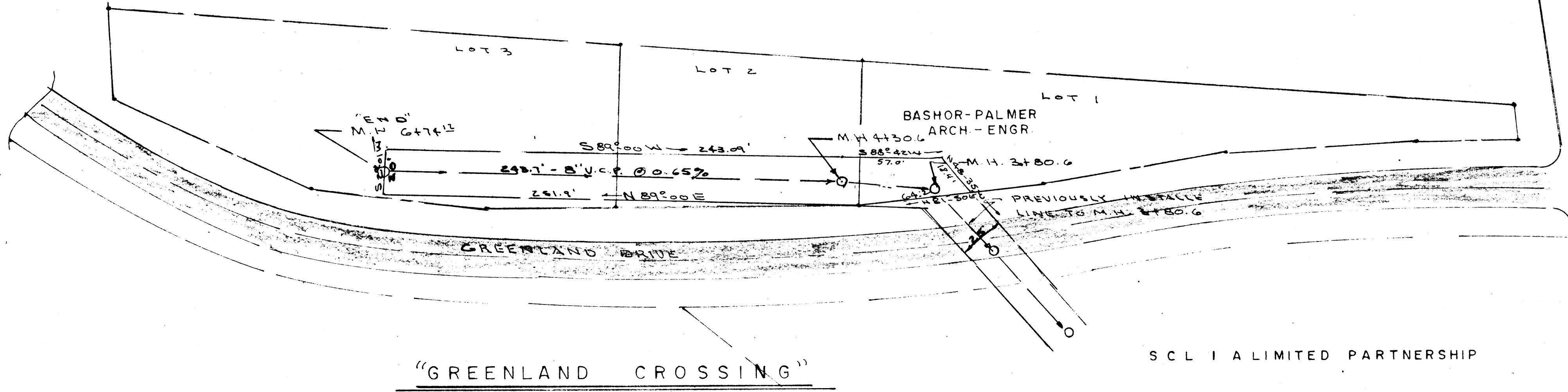
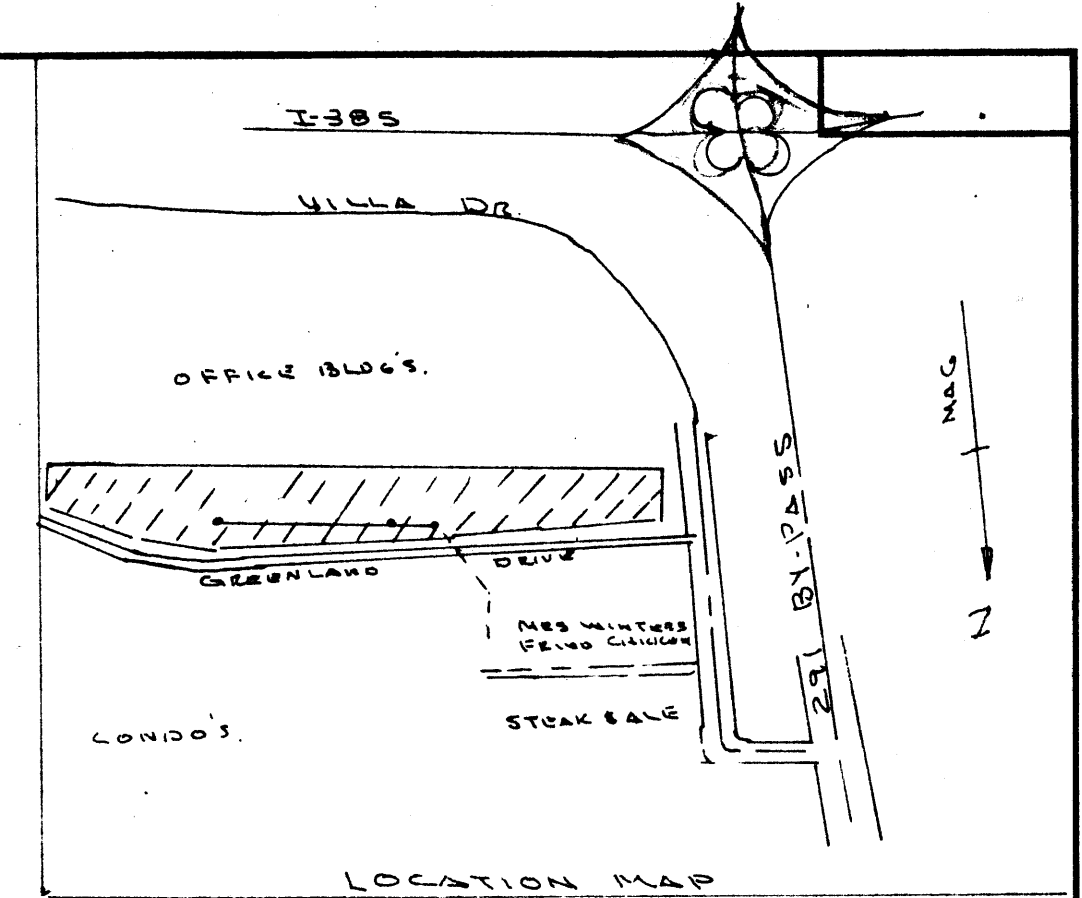


EXISTING OFFICE BLDG. COMPLEX.



"GREENLAND CROSSING"

SCL I A LIMITED PARTNERSHIP

MRS. WINTERS FRIED CHICKEN

THIS PLAT IS NOT A SUBDIVISION
AS DEFINED BY THE GREENVILLE
COUNTY SUBDIVISION REGULATIONS.

9/21/83 *F. J. Miles*
Chairman, Secretary, or Director of
Planning.
Greenville County Planning Commission

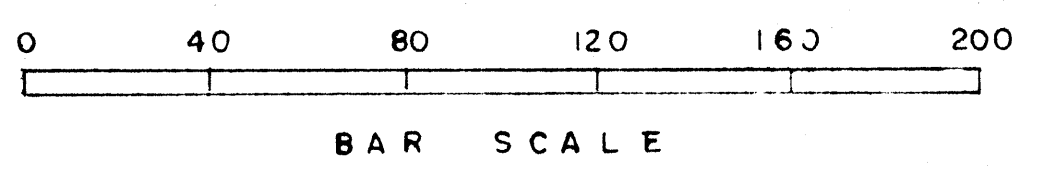
9585 ✓ SEP 21 1983

10-A-3

GREENVILLE COUNTY S.C.
FILED
SEP 21 11 44 AM '83
JONNIE S. HENSLEY
R.M.C.

I CERTIFY THE LOCATION OF EXISTING SANITARY SEWER LINE ON AND ACROSS THE SHOWN PROPERTY IS AS SHOWN TO THE BEST OF MY KNOWLEDGE

Kermit F. Gould
S.C. REG. NO. 4035



SANITARY SEWER EASEMENT FOR "GREENLAND CROSSING"		
SCALE 1" = 40'	APPROVED BY	DRAWN BY K.T.G.
DATE 9-2-83		
"AS BUILT" 4-20-83		DRAWING NUMBER

MICROFILMED