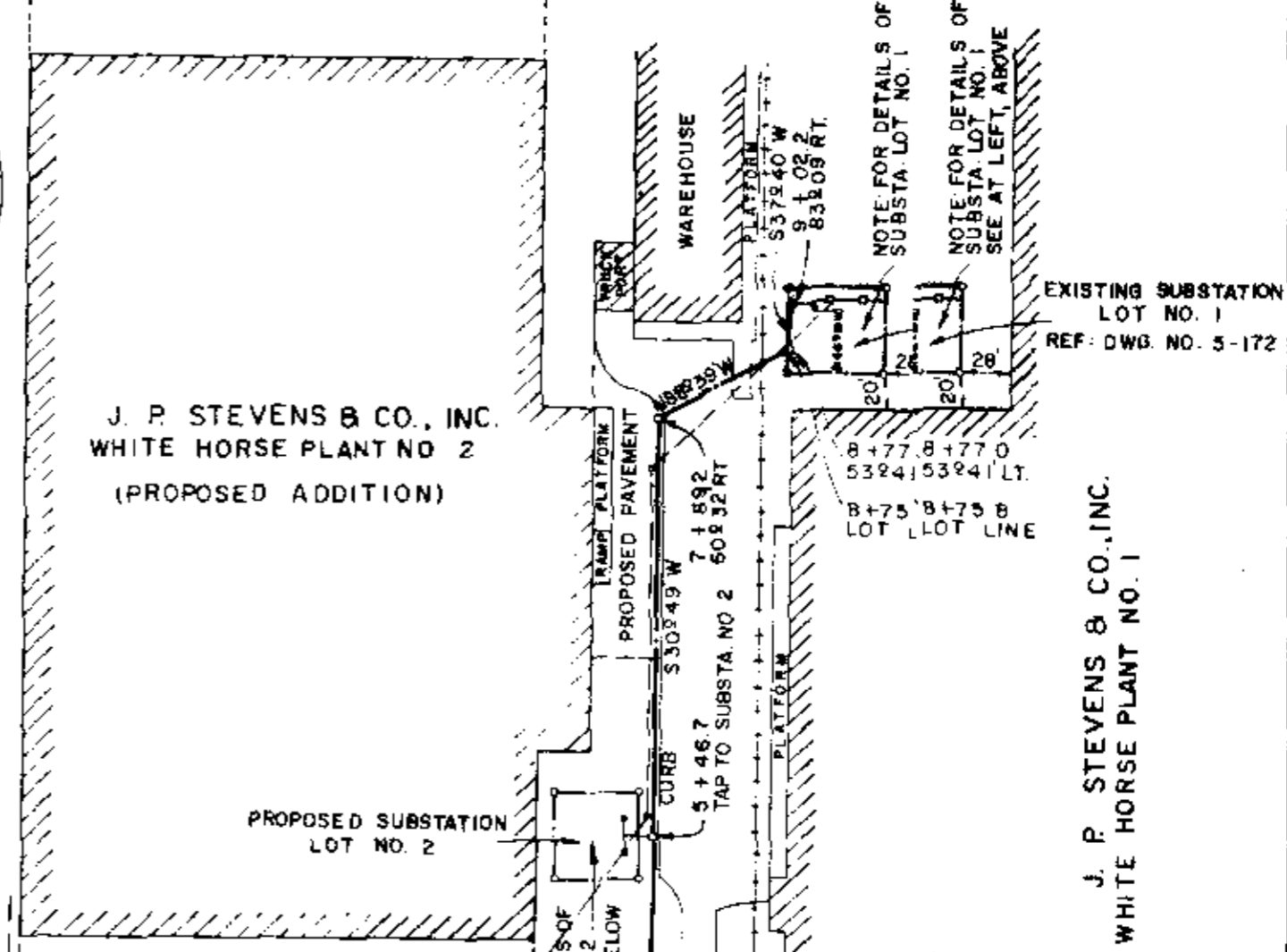
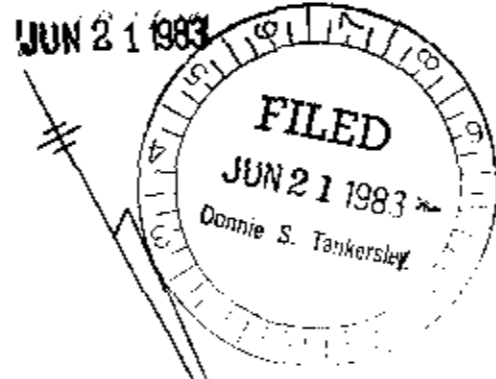


DETAILS OF EXISTING SUBSTATION  
LOT NO. 1  
SCALE: 1" = 30'  
REF. DWG. NO. 5-172

J. P. STEVENS & CO., INC.  
WHITE HORSE PLANT NO. 1



J. P. STEVENS & CO., INC.  
WHITE HORSE PLANT NO. 2  
(PROPOSED ADDITION)

EXISTING SUBSTATION  
LOT NO. 1  
REF. DWG. NO. 5-172

J. P. STEVENS & CO., INC.  
WHITE HORSE PLANT NO. 1

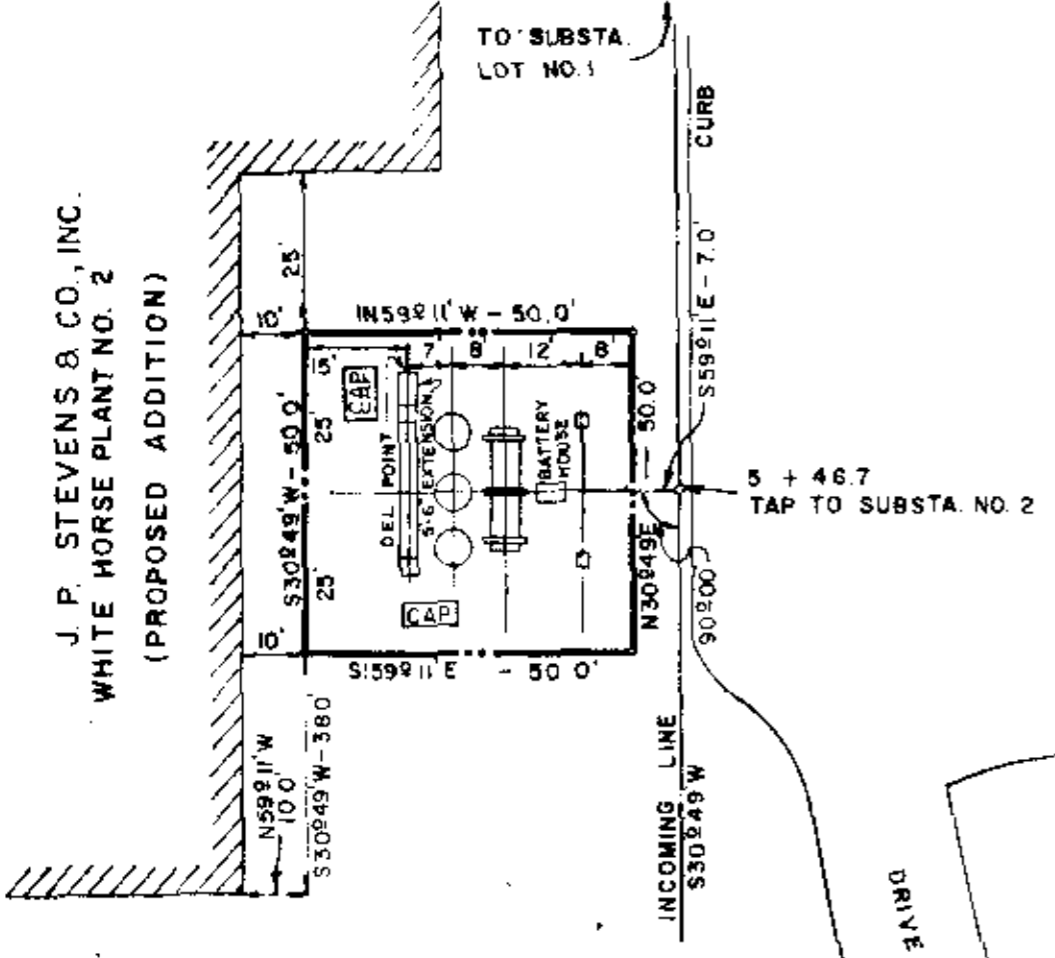
NOTE FOR DETAILS OF  
SUBSTA. LOT NO. 1  
SEE AT LEFT, ABOVE

NOTE FOR DETAILS OF  
SUBSTA. LOT NO. 2  
SEE AT LEFT, BELOW

S.C., S.C., R.L.S. No. 2522  
Duke Power Co.  
Charlotte, N.C.

NOTE:  
REVISEREVISED 9-21-65  
REVISEREVISED MAY 14, 1968  
6' ADDIS ADDITION TO SUBSTA.  
LOT NLOT NO.1 ADDED 3-21-83

DUKE POWER CIER COMPANY  
SUBSTATION LOTS  
AND IND  
RELOCATION (TION OF  
TRANSMISSION LINE  
J. P. STEVENS & CO., INC.  
WHITE HORSE PLANTS, NTS, NOS. 1 & 2  
GREENVILLE, WLE, S.C.  
GREENVILLE CLE COUNTY



DETAILS OF PROPOSED SUBSTATION  
LOT NO. 2  
SCALE: 1" = 30'

J. P. STEVENS & CO., INC.  
WHITE HORSE PLANT NO. 2  
(PROPOSED ADDITION)

31741  
9-R-68

NOTE: FORMERLY KNOWN AS  
MAVERICK MILLS

MICROFILMED