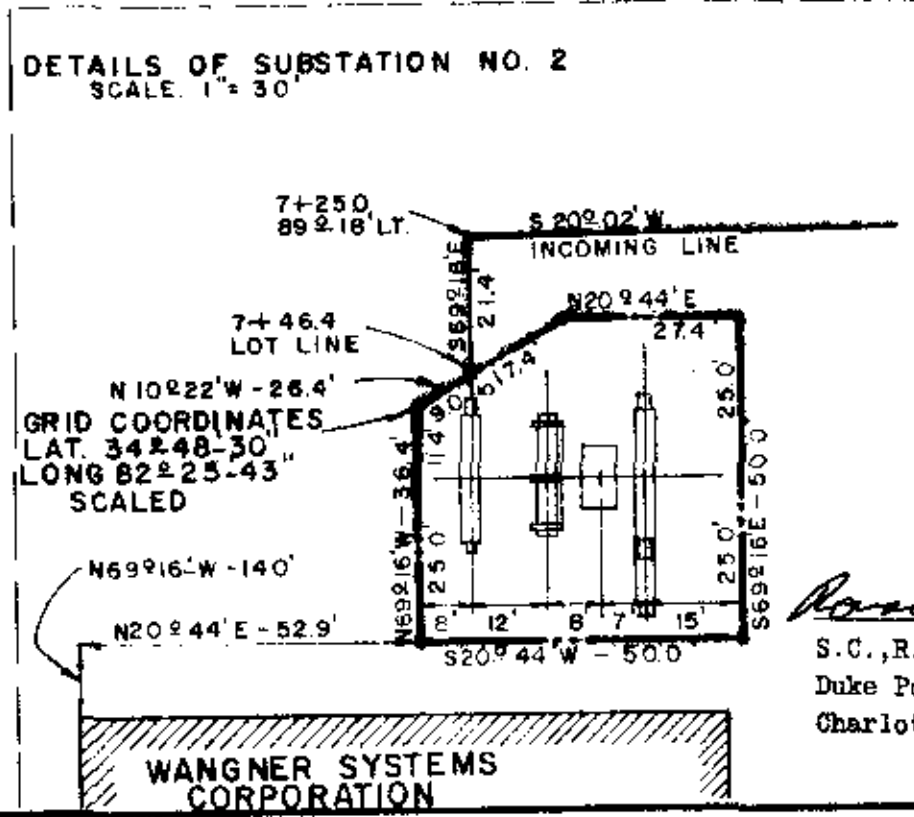
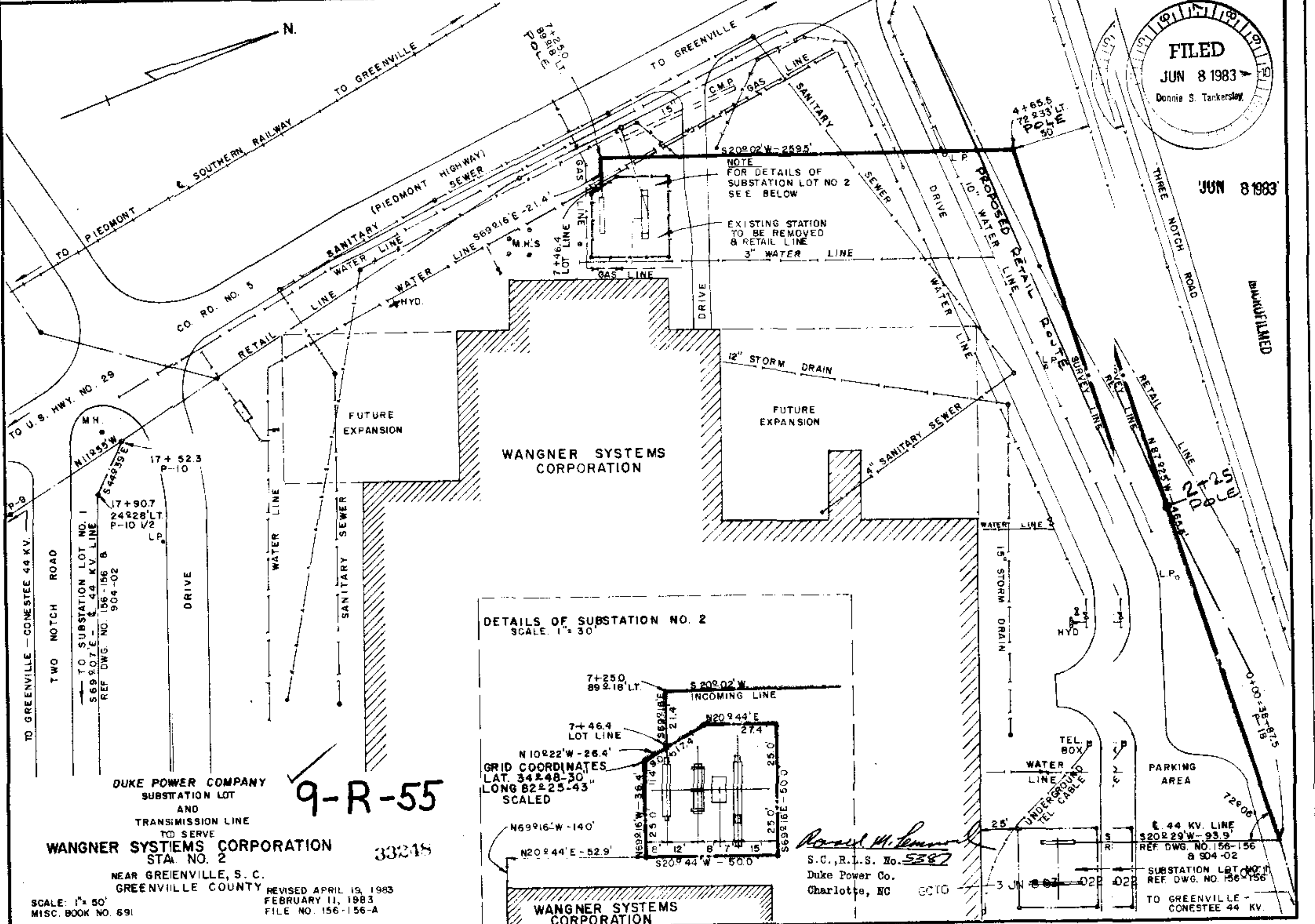


FILED  
 JUN 8 1983  
 Donnie S. Tankersley

JUN 8 1983



**DUKE POWER COMPANY**  
 SUBSTATION LOT  
 AND  
 TRANSMISSION LINE  
 TO SERVE  
**WANGNER SYSTEMS CORPORATION**  
 STA. NO. 2  
 NEAR GREENVILLE, S. C.  
 GREENVILLE COUNTY

**9-R-55**

33215

REVISD APRIL 19, 1983  
 FEBRUARY 11, 1983  
 FILE NO. 156-156-A

SCALE: 1" = 50'  
 MISC. BOOK NO. 691

*David M. ...*  
 S.C., R.L.S. No. 5387  
 Duke Power Co.  
 Charlotte, NC 6070

44 KV LINE  
 S 20° 29' W - 93.9'  
 REF. DWG. NO. 156-156  
 & 904-02  
 SUBSTATION LOT NO. 1  
 REF. DWG. NO. 156-156  
 TO GREENVILLE -  
 CONESTEE 44 KV.