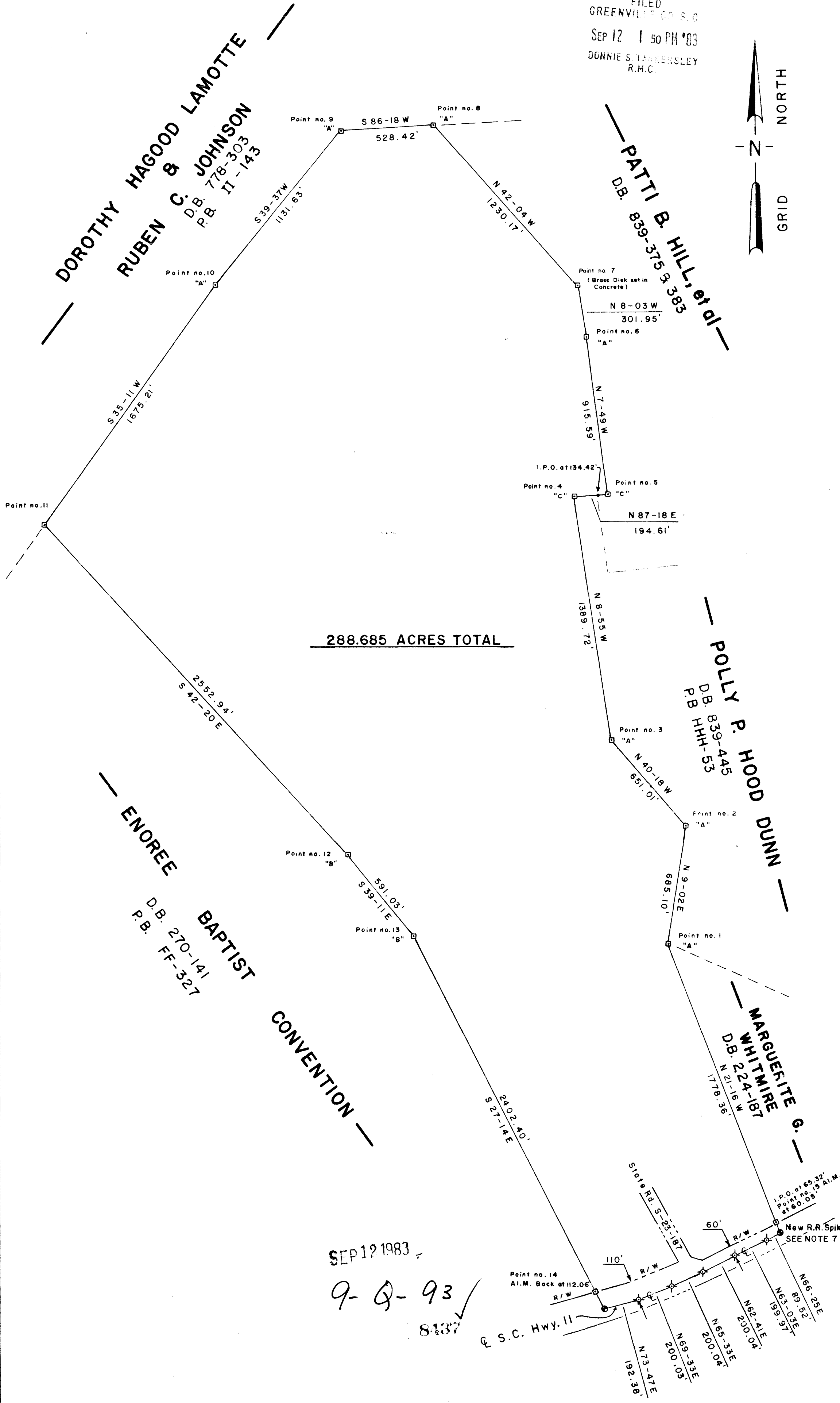
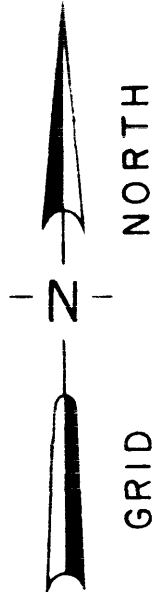
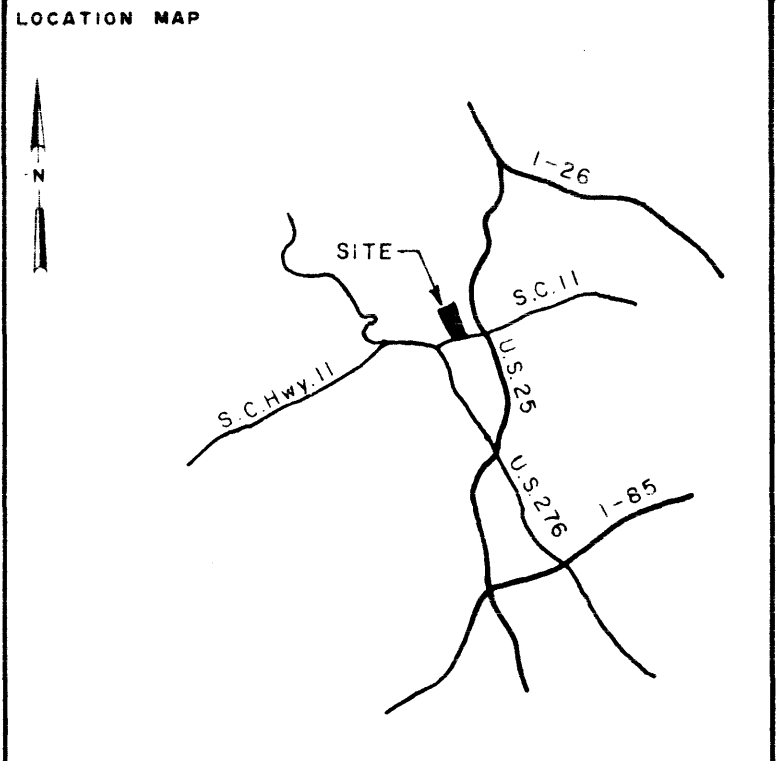


FILED  
GREENVILLE CO. S.C.  
SEP 12 1 50 PM '83  
DONNIE S. TARRANTSLEY  
R.H.C.



LEGEND

○	I.P. SET	△	STONE
●	I.P. FOUND	⊙	R.R. SPIKE
⊗	NAIL & CAP SET	⊕	NAIL & CAP FOUND
□		⊞	ALUMINUM MONUMENT SET

I hereby certify that the ratio of precision of the field survey is 1/10,000 as shown hereon and the area was determined by the coordinate method of area calculation.

I hereby certify that the measurements as shown on this plat are correct and that there are no encroachments or projections other than shown.

This property subject to all easements, zoning ordinances and rights of way, of record or not of record, if any.

*Sidney C. Miller* 8/30/83  
 SIGNATURE DATE

- NOTES:
- Aluminum Monuments (Magnetic) set are Bernsten # A-2-BR-30
  - Aluminum Monuments designated with "A" replace an Old Iron Pin corner found.
  - Aluminum Monuments designated with "B" replace an Old Iron Pin and Stone corner found.
  - Aluminum Monuments designated with "C" were placed at the base of an Old Pine Tree with XXX marks O.M.
  - Bearings are Grid and are based on S.C. State Plane Coordinate System, 1927 datum, N. Zone.
  - Distances are Horizontal and uncorrected for Grid and Sea Level.
  - The State Plane Coordinates of the New R. R. Spike in the center of S. C. Hwy. 11 (southeastern corner of this property) are N 761,977.88 , E 558,256.55

REFERENCE

DEED BOOK	419-298
	532-218
PLAT BOOK	FF-327
TAX MAP	666.3-1-4

STATE of SOUTH CAROLINA  
 DEPARTMENT of PARKS,  
 RECREATION and TOURISM

**PLEASANT RIDGE STATE PARK**  
 GREENVILLE COUNTY SOUTH CAROLINA

1"=400'  
 scale feet

DRAWN	CHECK	DATE	JOB NO.
F.E.B.	T.D.L.	7-16-83	

**SURVEYING & MAPPING CONSULTANTS, INC.**  
 P.O. BOX 6123 GREENVILLE, S.C. 29606

SEP 12 1983  
 9-9-93  
 8137