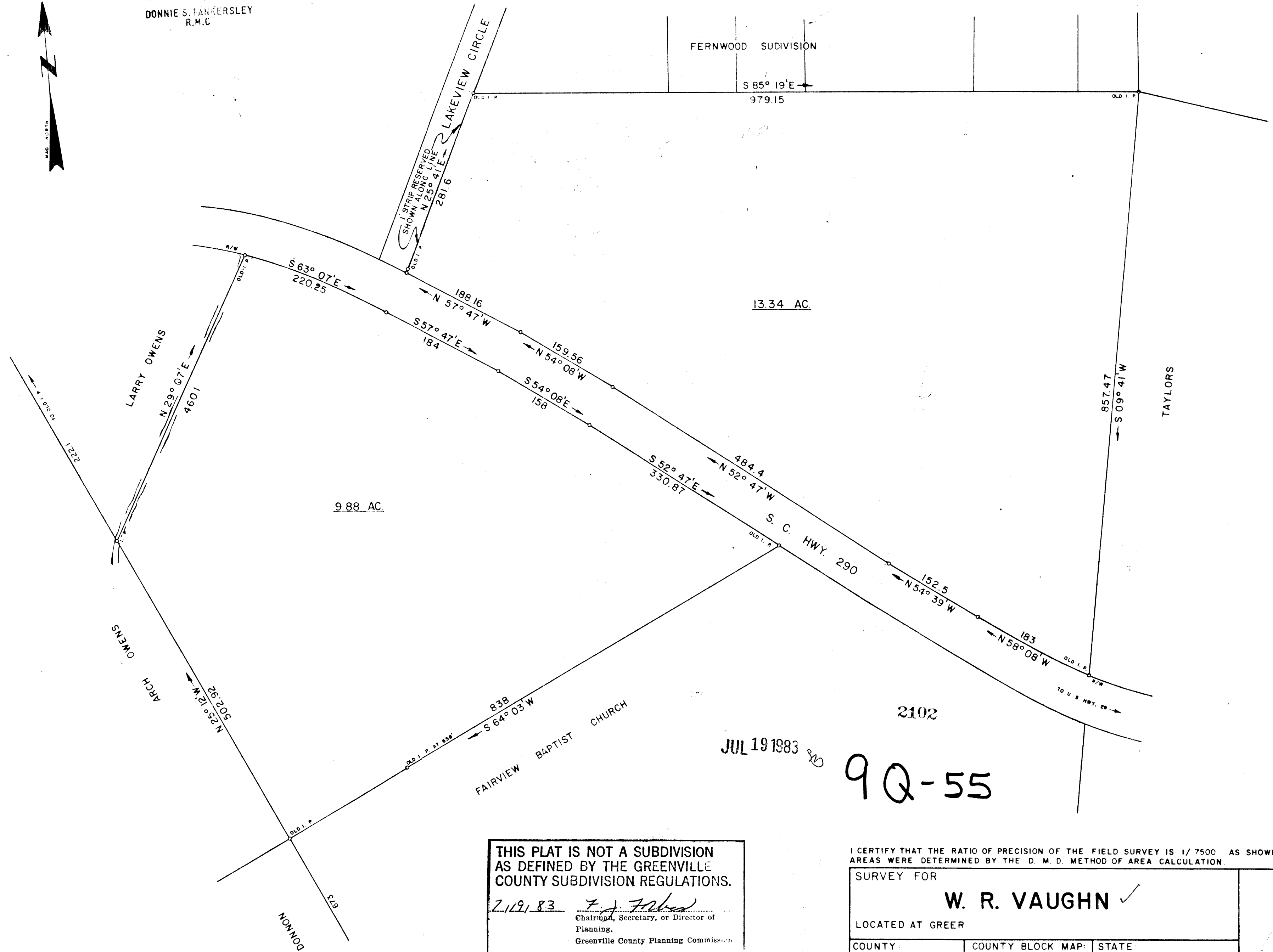


FILED
 GREENVILLE CO. S. C.
 JUL 19 4 30 PM '83
 DONNIE S. FARKERSLEY
 R.M.C.



13.34 AC.

9.88 AC.

2102

JUL 19 1983

9Q-55

THIS PLAT IS NOT A SUBDIVISION
 AS DEFINED BY THE GREENVILLE
 COUNTY SUBDIVISION REGULATIONS.
 7/19/83 *F. J. Farkersley*
 Chairman, Secretary, or Director of
 Planning.
 Greenville County Planning Commission

I CERTIFY THAT THE RATIO OF PRECISION OF THE FIELD SURVEY IS 1/7500 AS SHOWN HEREON AND THE AREAS WERE DETERMINED BY THE D. M. D. METHOD OF AREA CALCULATION.

SURVEY FOR		
W. R. VAUGHN ✓		
LOCATED AT GREER		
COUNTY GREENVILLE	COUNTY BLOCK MAP: T 202 & T 93	STATE SOUTH CAROLINA
DATE FEBRUARY 15, 1983	FIELD CHIEF B. E. HUSKEY	DRAWN BY L. B. MORROW
REVISID		
SCALE 1" = 100'		
WOLFE & HUSKEY, INC. - ENGINEERING and SURVEYING P. O. BOX 35 - LYMAN, S.C. 29365 - JUL 19 83		

B. E. Huskey
 MEMBER OF THE SOCIETY
 OF REG. LAND SURVEYORS.
 NO. 4785

MICROFILMED