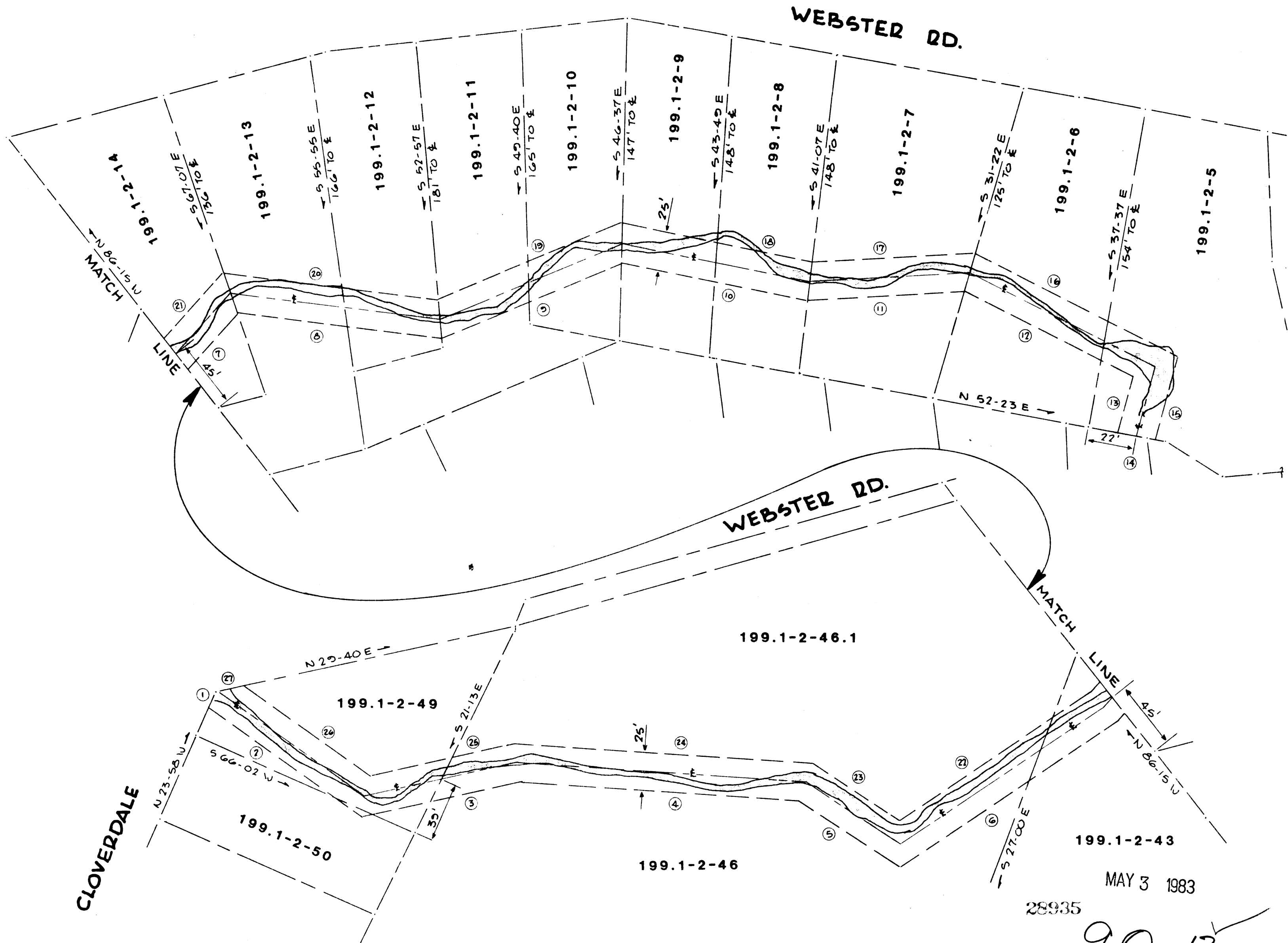
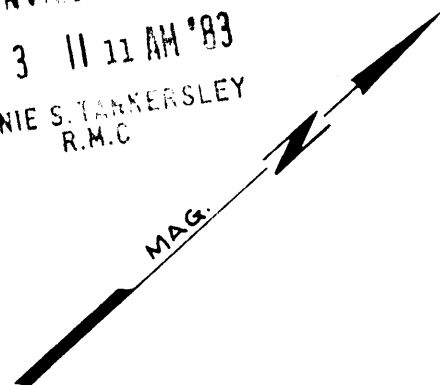


FILED  
GREENVILLE CO. S.C.  
MAY 3 11 11 AM '83  
DONNIE S. TANKERSLEY  
R.M.C.



- EASEMENT BEARINGS -
- 1) S23-58E 10.0'
  - 2) N77-50E 124.0'
  - 3) N30-05E 108.0'
  - 4) N46-12E 183.0'
  - 5) N75-28E 80.0'
  - 6) N08-20E 173.0'
  - 7) N06-08W 55.0'
  - 8) N49-26E 135.0'
  - 9) N19-47E 127.0'
  - 10) N53-42E 123.0'
  - 11) N39-12E 103.0'
  - 12) N68-50E 125.0'
  - 13) S30-41E 38.0'
  - 14) N52-23E 25.0'
  - 15) N29-47W 54.9'
  - 16) S68-50W 150.0'
  - 17) S39-12W 108.0'
  - 18) S53-42W 129.0'
  - 19) S19-47W 130.0'
  - 20) S49-26W 143.0'
  - 21) S06-08E 63.0'
  - 22) S08-20W 153.0'
  - 23) S75-28W 69.0'
  - 24) S46-12W 197.0'
  - 25) S30-05W 96.0'
  - 26) S77-50W 102.0'
  - 27) S29-40W 19.0'

THIS PLAT IS NOT A SUBDIVISION  
AS DEFINED BY THE GREENVILLE  
COUNTY SUBDIVISION REGULATIONS.  
4/25/83 *F.J. M...*  
Chairman, Secretary, or Director of  
Planning.  
Greenville County Planning Commission



SEAL		REVISIONS	
MARK	DATE	BY	DESCRIPTION
△			
△			
△			
△			
△			
△			
△			

**THE CITY OF GREENVILLE**  
POST OFFICE BOX 2207 GREENVILLE, SOUTH CAROLINA

**EASEMENT FOR CREEK IMPROVEMENTS**  
— 25' PERMANENT EASEMENT —

SURVEYED BY RAP DATE 8-82 CHECKED BY \_\_\_\_\_ DATE \_\_\_\_\_  
DRAWN BY RAP DATE 11-22-82 FIELD BOOK NO. \_\_\_\_\_  
SCALE 1" = 50' GC FILE NO. 3 MY3 | 83-1089

SHEET NUMBER 1 OF 5,000

28935  
MAY 3 1983  
9-0-13