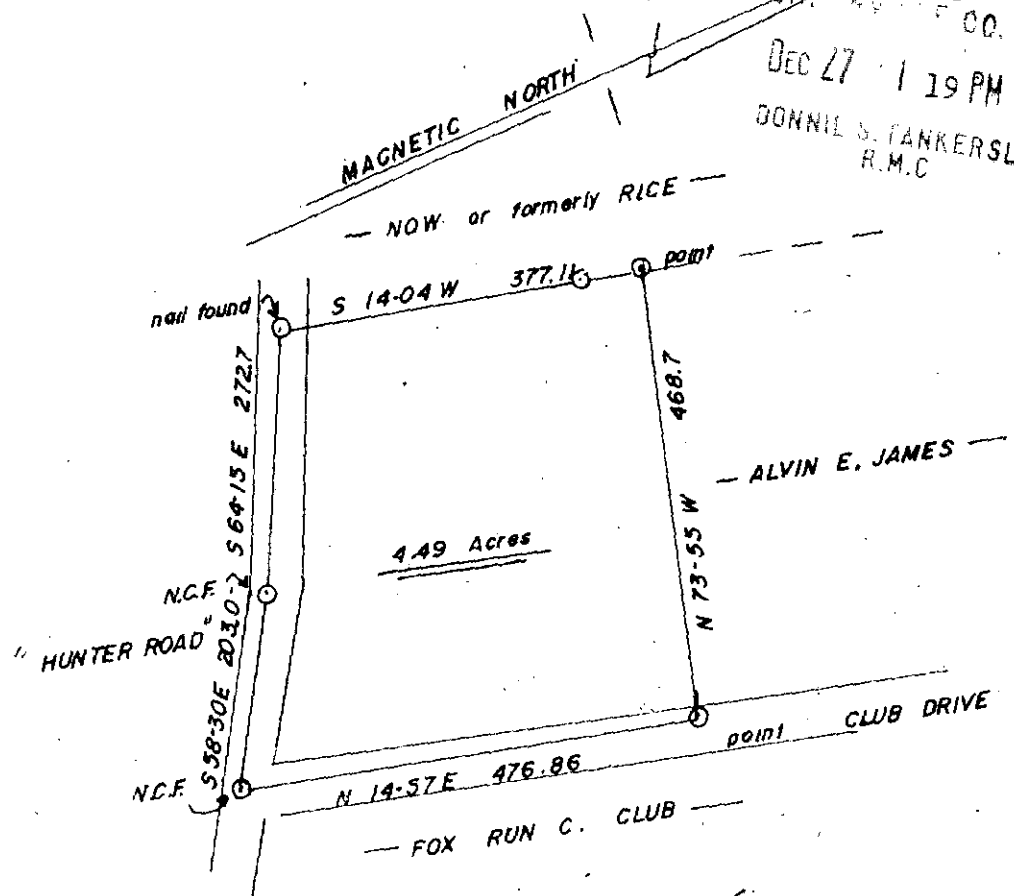


MICROFILMED

"THIS PLAT TO BE RECORDED IN THE R.M.C. OFFICE."

"THIS IS TO CERTIFY THAT THE ERROR OF CLOSURE OF THIS SURVEY IS 1 IN 5000^x, AND THE ACREAGE HAS BEEN DETERMINED BY THE D.M.D. METHOD." *J.L.M.*

FILED
GR... CO. S. C.
DEC 27 1 19 PM '82
DONNIE S. FANKERSLEY
R.M.C.



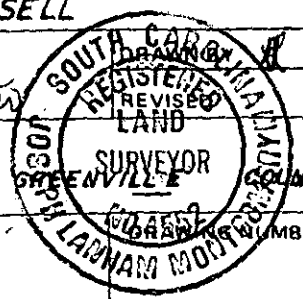
15542

9-K-30

DEC 27 1982

SC70 -----2 DE27 82 917

DRAWN FOR	
KENNETH L. CASSELL	
SCALE: 1"=200'	APPROVED BY
DATE: 11-30-82	<i>J.L. Montgomery</i>
NEAR SIMPSONVILLE, S.C.	



3.000CI