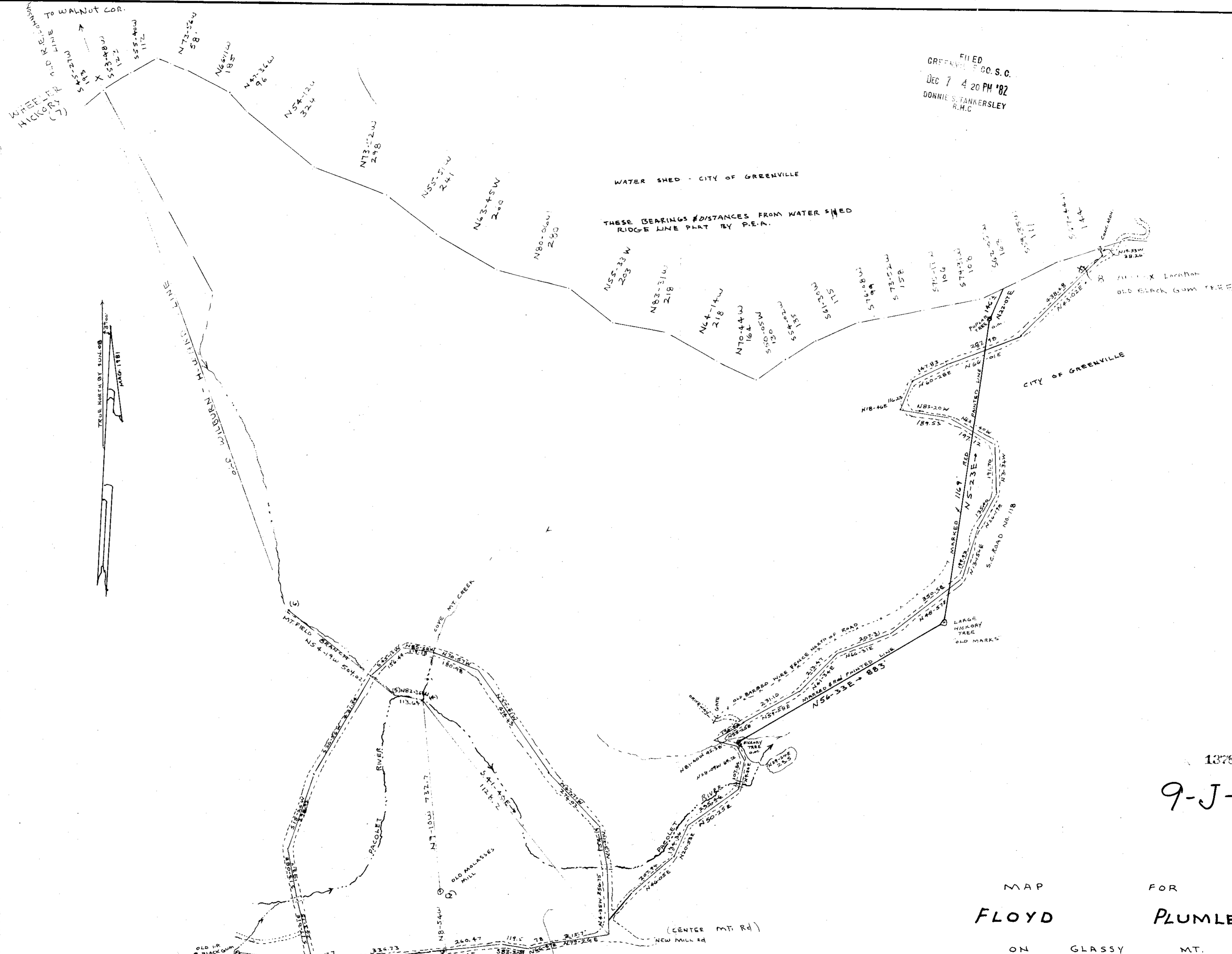


FILED  
GREENVILLE CO. S.C.  
DEC 7 4 20 PM '82  
DONNIE S. TANNERSLEY  
R.M.C.



THESE BEARINGS & DISTANCES FROM WATER SHED  
RIDGE LINE PLAT BY P.E.A.



13787  
9-J-7 ✓

MAP FOR  
**FLOYD PLUMLEY**  
ON GLASSY MT.  
GREENVILLE COUNTY S.C.  
WEBB SURVEYING & MAPPING CO.

- NOTE: THE FOLLOWING POINTS POINTED OUT AS CORNERS  
BY FLOYD PLUMLEY ON JULY 8, 1981
- (1) I.P.O. AT BLACK GUM TREE
  - (2) PINE (GONE) BY CEMETARY
  - (3) OLD MOLASSES MILL
  - (4) MOUTH OF COVE MT. BRANCH & PACOLET RIVER
  - (5) MOUTH OF MT. FIELD BRANCH & PACOLET RIVER
  - (6) POPLAR TREE ON MT. FIELD BR. @ A SPRING
  - (7) APPROX. WHEELER HICKORY
  - (8) APPROX. OLD BLACK GUM

SCALE 1" = 200' JULY 1981  
ADDITION JUNE 1982

CHARLES F. WEBB  
REGISTERED  
1577  
LAND SURVEYOR  
SOUTH CAROLINA

THIS PLAT FOR RECORDING

THIS PLAT FOR RECORDING

BLK. BK. REF. SHEET 44-1

T.M. 10,000 T.M.