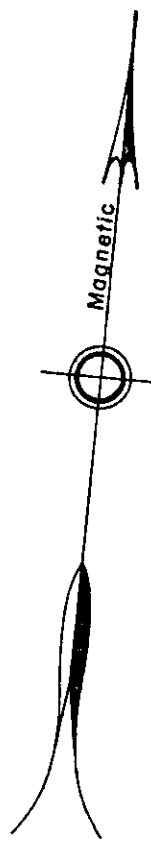
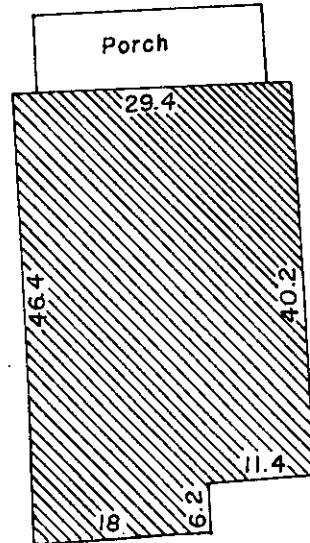


FILED
GREENVILLE CO. S.C.
AUG 26 12 37 PM '82
DONNIE S. TANKERSLEY
R.M.C.

SUPER HIGHWAY U.S. NO. 29



J.P. STEVENS & CO. INC.



AREA=
0.212 Acres

PET DAIRY PRODUCTS CO.

226.18' to Super Highway U.S. No. 29

EAST STONE AVE. BY-PASS

PROPERTY OF

J. P. STEVENS & CO. INC.
GREENVILLE CO., S.C.

Scale 1" = 20' August, 1982

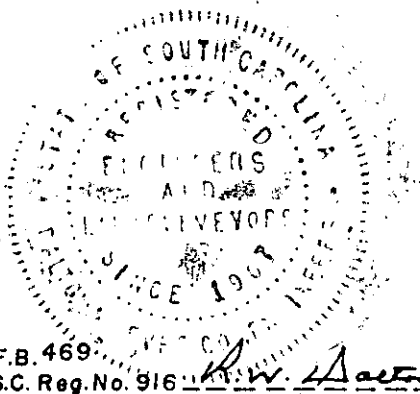
DALTON & NEVES CO., ENGINEERS

121 MANLY STREET

GREENVILLE, S. C.

4789

9-E-63 ✓



F.B. 469
S.C. Reg. No. 916

300 & 50151801