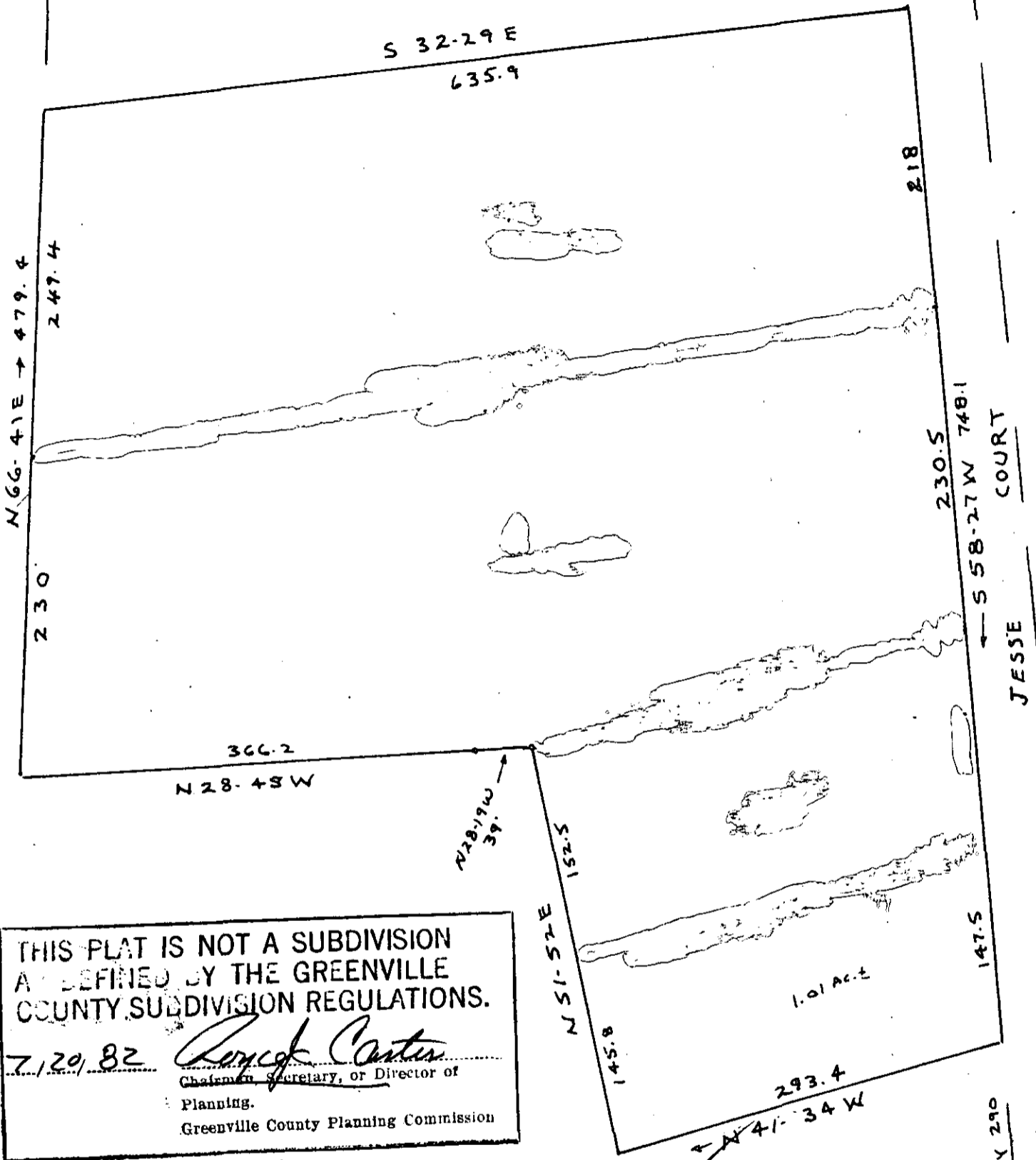


FILED
 GREENVILLE CO. S.C.
 JUL 20 4 38 PM '82
 DONNIE TANKERSLEY
 R.M.C.

MICROFILMED



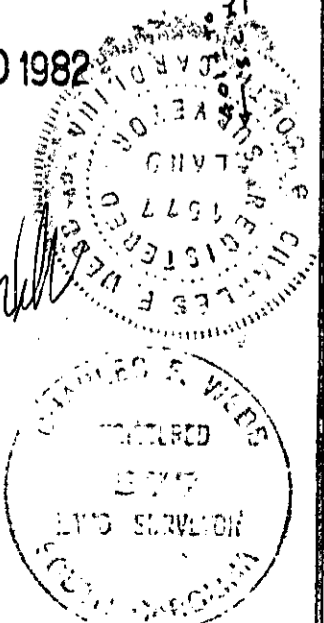
THIS PLAT IS NOT A SUBDIVISION
 AS DEFINED BY THE GREENVILLE
 COUNTY SUBDIVISION REGULATIONS.
 7/20/82 *Lonnie Carter*
 Chairman, Secretary, or Director of
 Planning.
 Greenville County Planning Commission

ADJUSTED PLAT LOTS 2, 3, & 4
 J. AND S. ESTATES
 NEAR SANDY FLAT
 GREENVILLE COUNTY S.C.
 WEBB SURVEYING & MAPPING CO.

JUL 20 1982

9-C-78

Lonnie Carter



THIS PLAT FOR RECORDING

Closure datum 1:5000

300 8 43241801

SCALE 1"=100'

