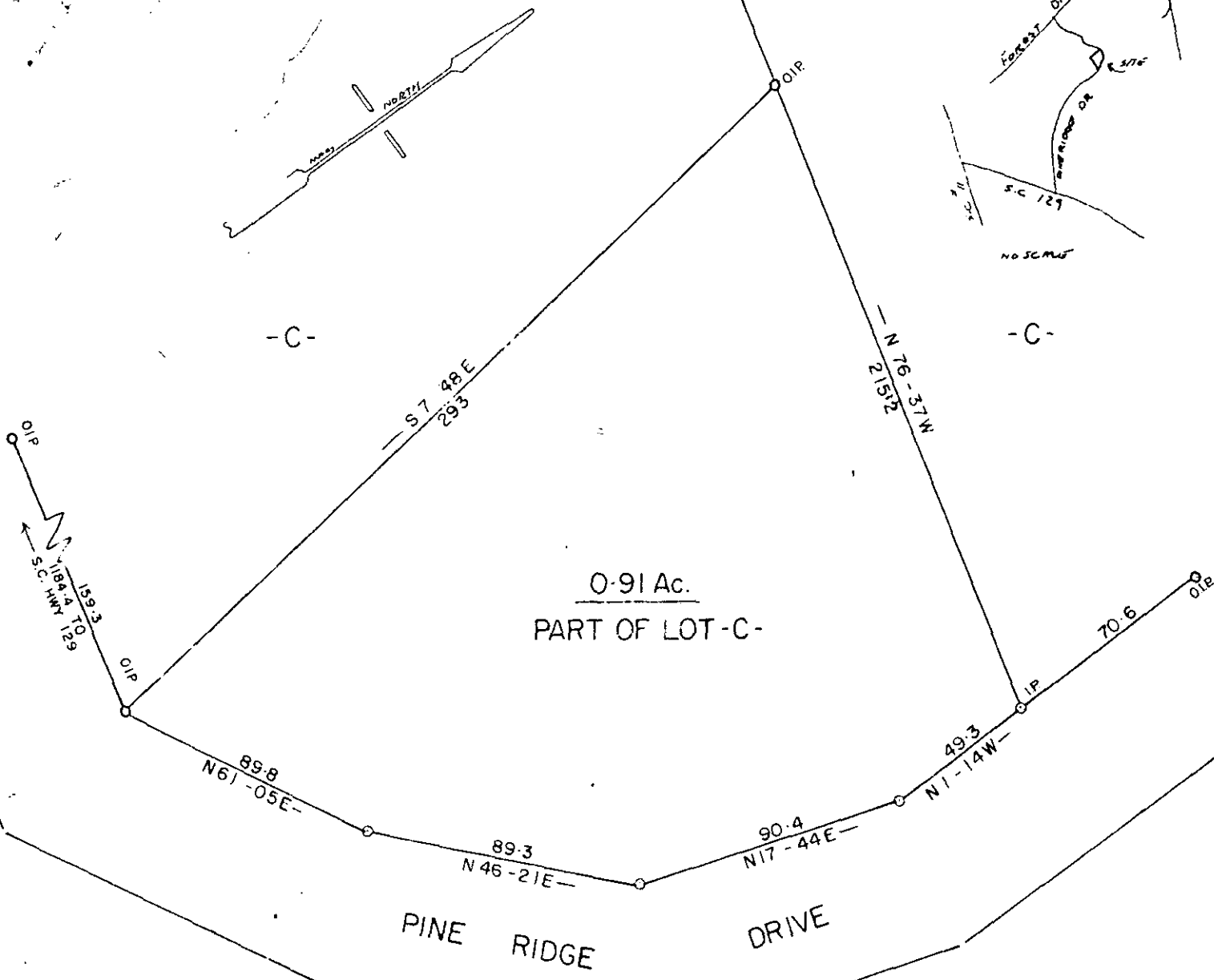


MICROFILMED

NO. 2013 C4



0.91 Ac.
PART OF LOT - C -

PINE RIDGE DRIVE

THIS PLAT IS NOT A SUBDIVISION
 AS DEFINED BY THE GREENVILLE
 COUNTY SUBDIVISION REGULATIONS.
 4.1.1.82 *Royce J. Carter*
 Chairman, Secretary, or Director of
 Planning.
 Greenville County Planning Commission

PROPERTY OF

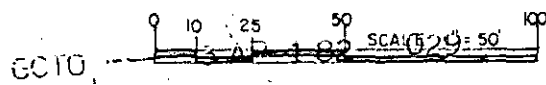
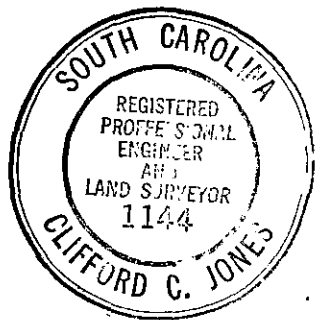
KEVIN SHIRLEY

FILED
 GREENVILLE CO. S.C.
 APR 1 12 40 PM '82
 DONNIE S. TANKERSLEY
 R.M.C.

8-4-75 ✓

GREENVILLE COUNTY, S. C. 22044

MAR - 10 - 1982



3.00CD