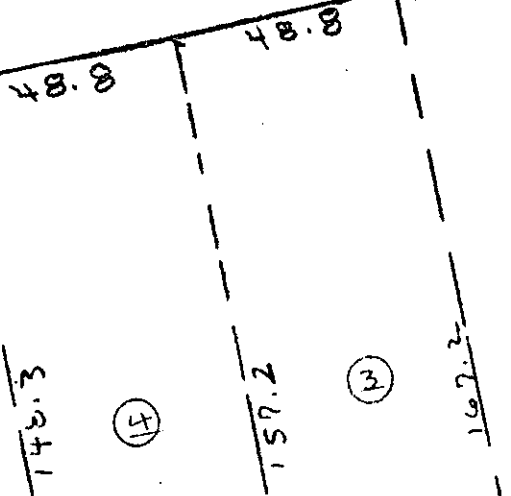


GREENVILLE CO. S. C.  
MAR 2 2 13 PM '82  
DONNIE S. TANKERSLEY  
R.M.C.

MICROFILMED

SPRICKS  
T  
S  
H  
E  
I  
H

ARDEN STREET



19536

MAR 2 1982

A PART OF LOTS 3 & 4 which  
have been combined 0.288 AC.

N 64-47 W 230.7

THIS PLAT IS NOT A SUBDIVISION  
AS DEFINED BY THE GREENVILLE  
COUNTY SUBDIVISION REGULATIONS.

3/2/1982

*F. James Forbes*  
Chairman, Secretary, or Director of  
Planning.  
Greenville County Planning Commission

PLAY FOR

ROYAL ELLA HUGHES

IN THE CITY OF GREENVILLE

GREENVILLE COUNTY S.C.

WEBB'S SURVEYING & MAPPING CO.

SCALE 1" = 40' JULY 1975

BLK. BK. REC. 200-2-48

8-Y-16

2 MR 2 182 660