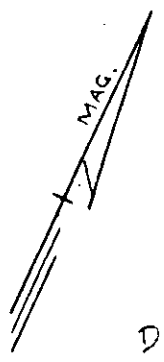
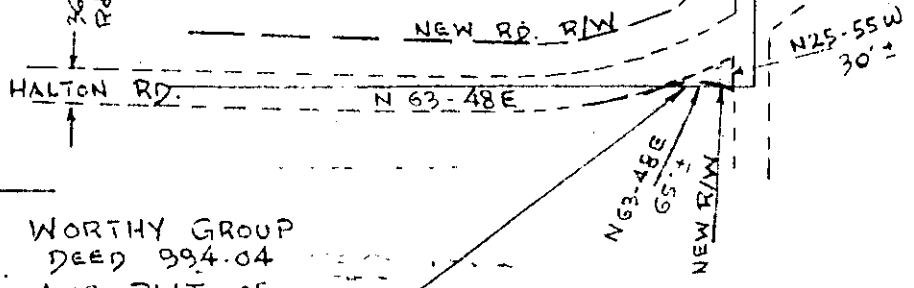
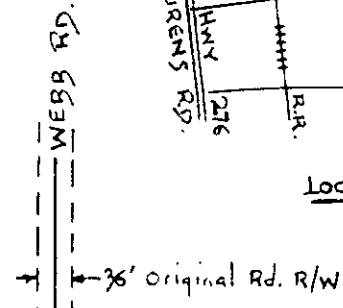
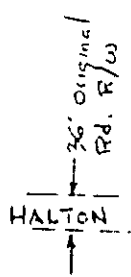


LOCATION MAP



DANIEL INTERNATIONAL CORPORATION
 DEED 1118-467
 PLAT FOR WORTHY GROUP BY
 ENWRIGHT ASSO., INC. 11-20-79



WORTHY GROUP
 DEED 994.04
 AND PLAT OF
 LINCOLNIA DEVELOPMENT CORPORATION, INCORPORATED
 BY ENWRIGHT ASSO., INC. 1-23-74
 .02 Ac ± or 975 SQ. FT. ±

FILED
 GREENVILLE CO. S.C.
 DEC 1 9 42 AM '81
 DONNIE S. TANKERSLEY
 R.M.C.

PLAT FOR
 CITY OF GREENVILLE
 HALTON ROAD - WEBB ROAD IMPROVEMENTS
 SHOWING OWNERSHIP & AREA IN NEW R/W

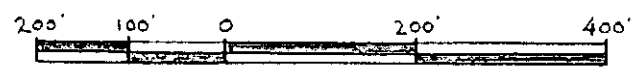
13151 ✓

GREENVILLE, S.C.

SCALE 1" = 200'

JULY 22, 1981

DEC 1 1981



SOUTH CAROLINA REGISTERED PROFESSIONAL ENGINEER
 COMPILED FROM EXISTING DEEDS, PLATS & R/W DWGS.
 JAMES D. CRANE
 R.L.S. #3320

8-W-83

PIEDMONT ENGINEERS - ARCHITECTS - PLANNERS
 GREENVILLE, S.C.

300 & 10601801