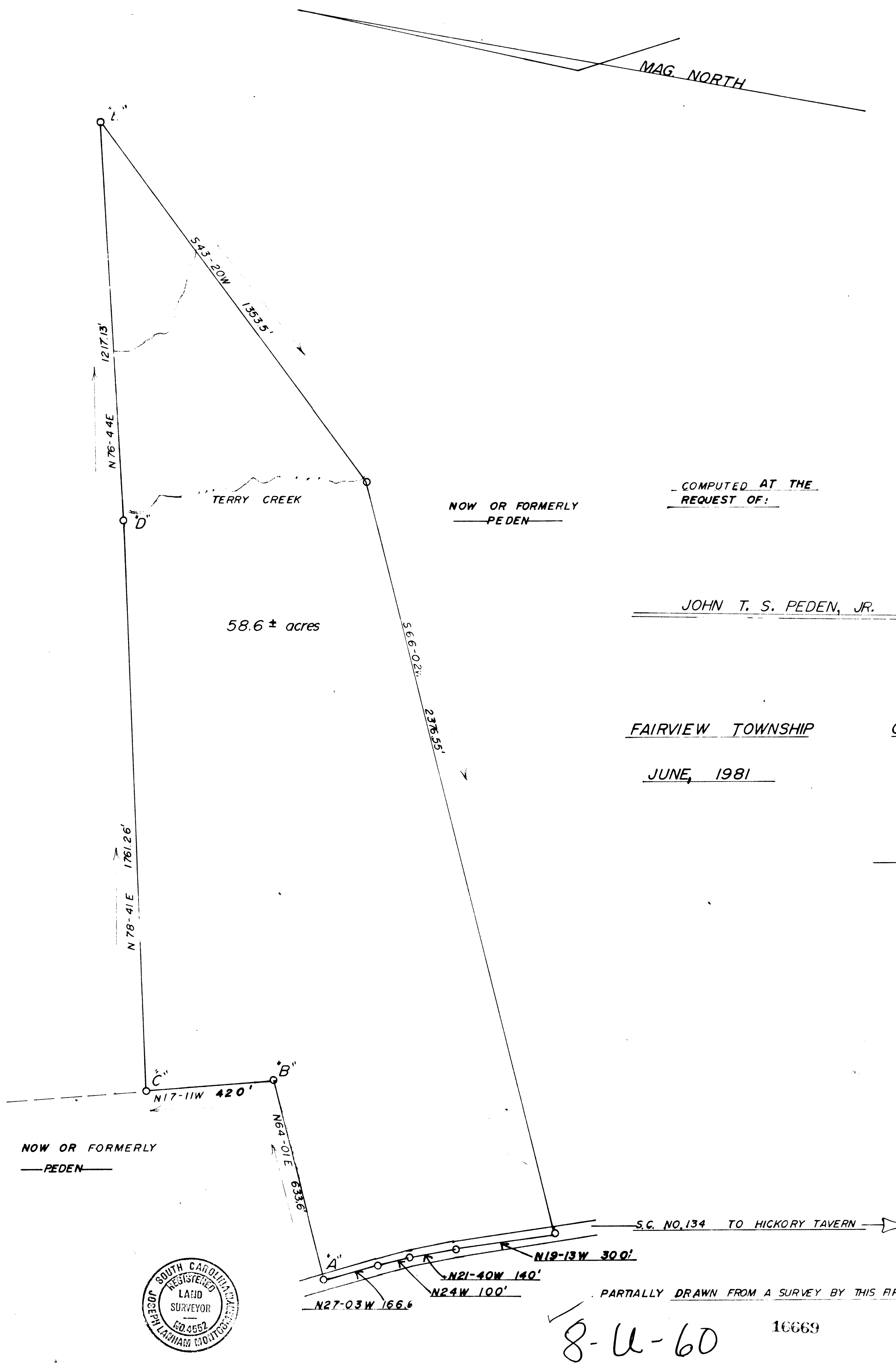
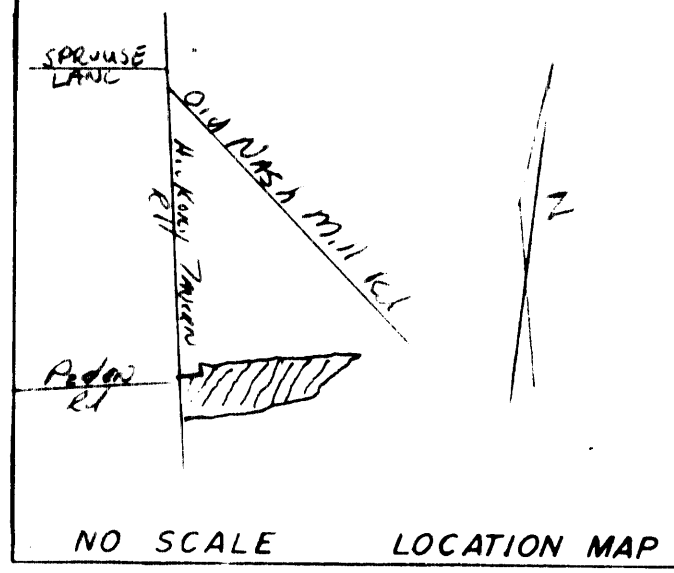


FILED
 CO. S. C.
 JAN 25 11 07 AM '82
 DONALD J. JENNERSLEY
 R.M.C.



COMPUTED AT THE
 REQUEST OF:

JOHN T. S. PEDEN, JR.

FAIRVIEW TOWNSHIP

GREENMILLE COUNTY, S. C.

JUNE, 1981

SCALE: 1" = 200'

J. L. Montgomery, III
 J. L. MONTGOMERY, III
 RLS

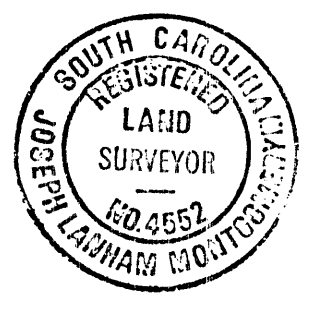
J. L. MONTGOMERY, III
 Registered Professional Surveyor
 NORTH MAPLE STREET
 SIMPSONVILLE, S. C. 2968



THIS PLAT IS NOT A SUBDIVISION
 AS DEFINED BY THE GREENVILLE
 COUNTY SUBDIVISION REGULATIONS.
 1-2482 Stephen W. Turner
 Director, Secretary, or Director of
 Planning, Associate Planner
 Greenville County Planning Commission

NOTE:
 LINES A, B, C COPIED FROM SURVEY
 BY L. C. GODSEY, RLS. 3-3-67
 LINES C, D, E HAVE BEEN COMPUTED
 FROM SURVEY BY J. L. MONTGOMERY, III RLS. 1-10-77

NOW OR FORMERLY
 PEDEN



DRAWN BY J. E. MORRIS, III

PARTIALLY DRAWN FROM A SURVEY BY THIS FIRM 1-10-77, OTHER LINES COMPUTED

8-U-60

100669

JAN 25 1982

"THIS IS TO CERTIFY THAT THE ERROR OF CLOSURE OF THIS SURVEY IS 1 IN Computed AND THE ACREAGE HAS BEEN DETERMINED BY THE D. M. D. METHOD."

UNRECORDED