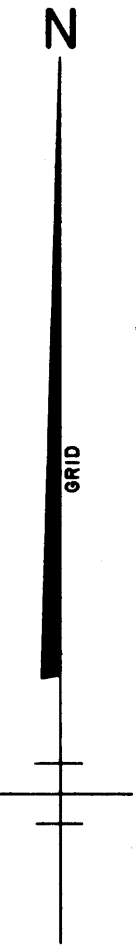
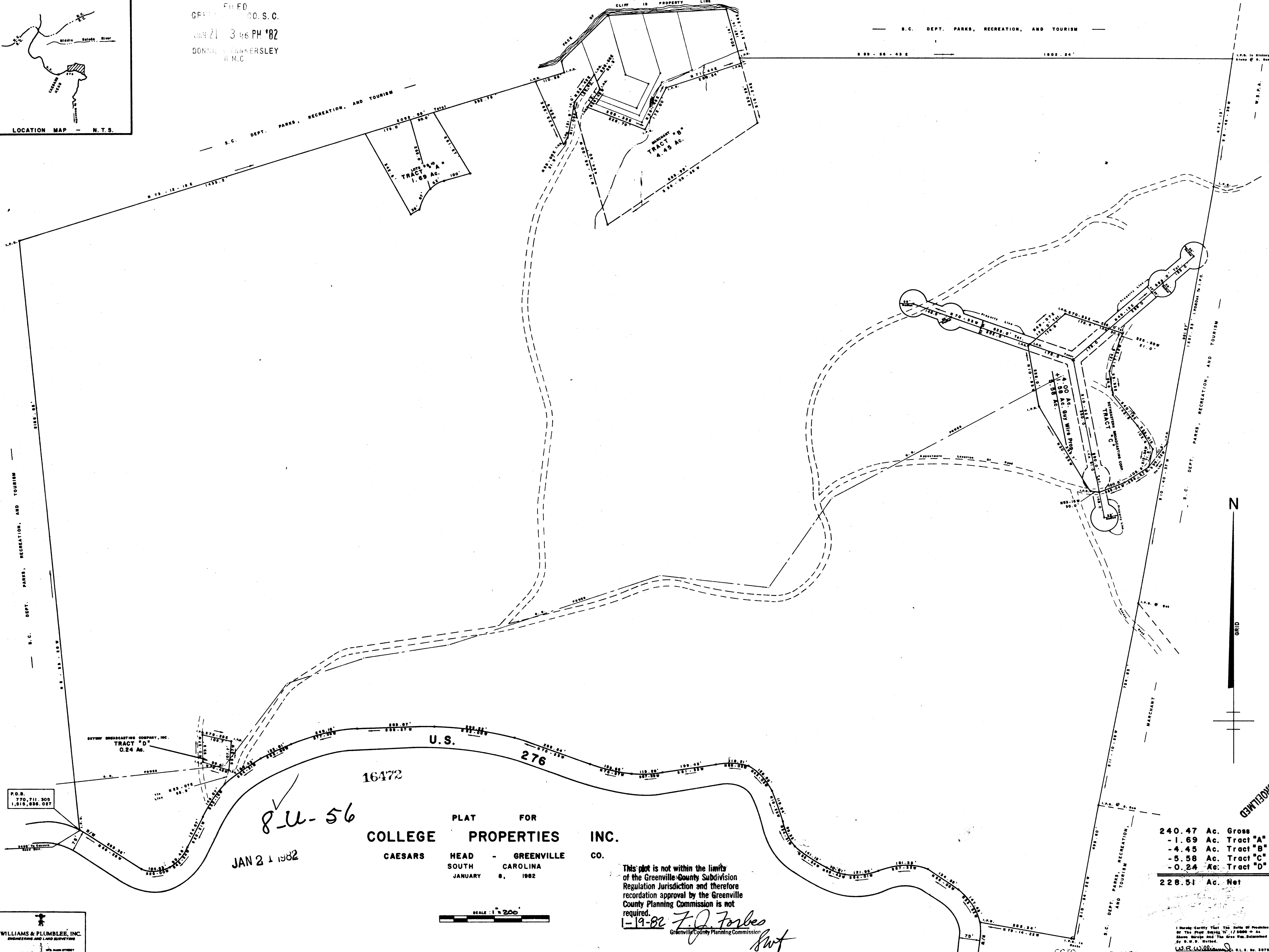


FILED  
 GREENVILLE, S.C.  
 JAN 21 3 46 PM '82  
 DONNIE W. PARKERSLEY  
 R.M.C.

S.C. DEPT. PARKS, RECREATION, AND TOURISM  
 8 89 - 88 - 43 E 1802' 24"



P.O.B.  
 770, 711, 505  
 1, 315, 436, 027

8-U-56  
 JAN 21 1982

PLAT FOR  
**COLLEGE PROPERTIES INC.**  
 CAESARS HEAD - GREENVILLE CO.  
 SOUTH CAROLINA  
 JANUARY 9, 1982



This plat is not within the limits of the Greenville County Subdivision Regulation Jurisdiction and therefore recordation approval by the Greenville County Planning Commission is not required.  
 1-19-82 *F.J. Forbes*  
 Greenville County Planning Commission

240.47	Ac. Gross
- 1.69	Ac. Tract "A"
- 4.45	Ac. Tract "B"
- 5.58	Ac. Tract "C"
- 0.24	Ac. Tract "D"
<b>228.51</b>	<b>Ac. Net</b>

**WILLIAMS & PLUMBLEE, INC.**  
 ENGINEERS AND LAND SURVEYORS  
 101 MAIN STREET  
 GREENVILLE, S.C. 29601  
 PHONE 252-5200

I Herby Certify That The Title of this Plat is as Shown Herein and That the Same Was Examined by D. W. S. Herby.  
 D. W. S. Herby  
 S.C. DEPT. PARKS, RECREATION, AND TOURISM  
 1-19-82  
 3-1A21-82  
 5.0000