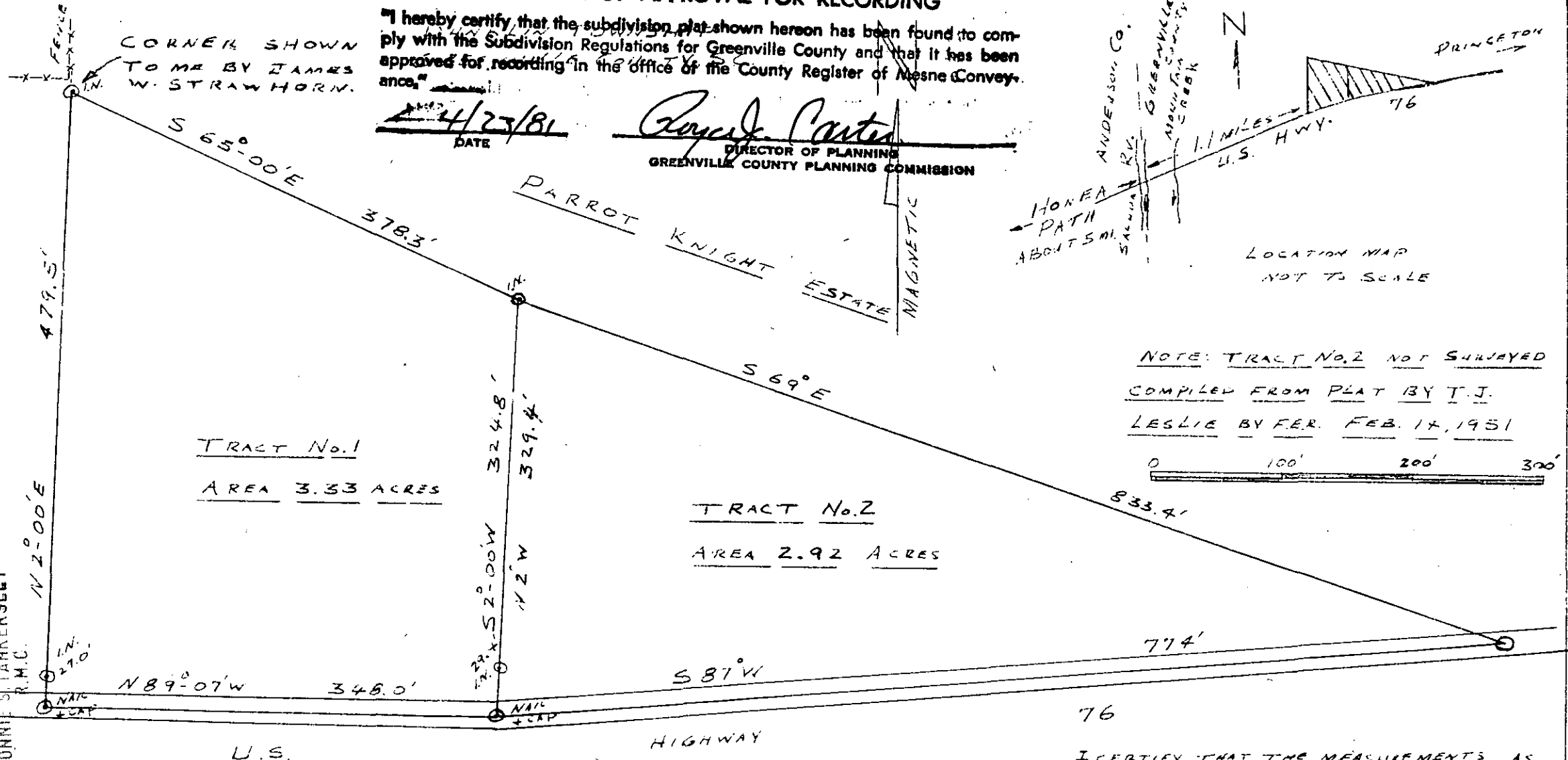
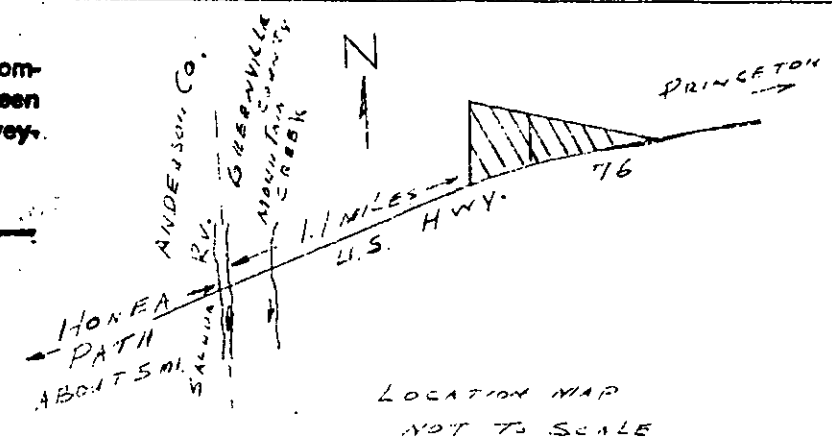


CERTIFICATE OF APPROVAL FOR RECORDING

"I hereby certify that the subdivision plat shown hereon has been found to comply with the Subdivision Regulations for Greenville County and that it has been approved for recording in the office of the County Register of Mesne Conveyance."

DATE 4/23/81

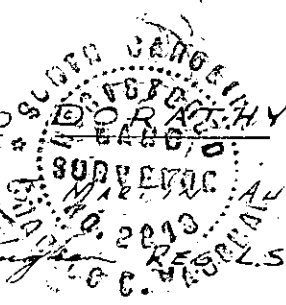
Royce Carter
 DIRECTOR OF PLANNING
 GREENVILLE COUNTY PLANNING COMMISSION



FILED
 APR 23 2 24 PM '81
 WILLIAM MOSSER
 1 APR 23 10 45 AM '81
 GCTO --- 1 APR 23 10 45 AM '81

SUMMARY

JAMES W. AND SUE K. STRAWHORN



REFERENCE PLAT 96.26 ACRES, BY HUGHES, JR. & ASSOCIATES, INC., MAR. 17, 1961. PROPERTY OUT OF SOUTH EAST CORNER.

SCALE 1" = 100' U.S. ANDERSON, S.C. APRIL 14, 1981

I CERTIFY THAT THE MEASUREMENTS AS SHOWN IN TRACT No. 1 ARE CORRECT; AREA CALCULATED BY D.M.D METHOD.

8-0-15 ✓ 29796

APR 23 1981

MICROFILMED