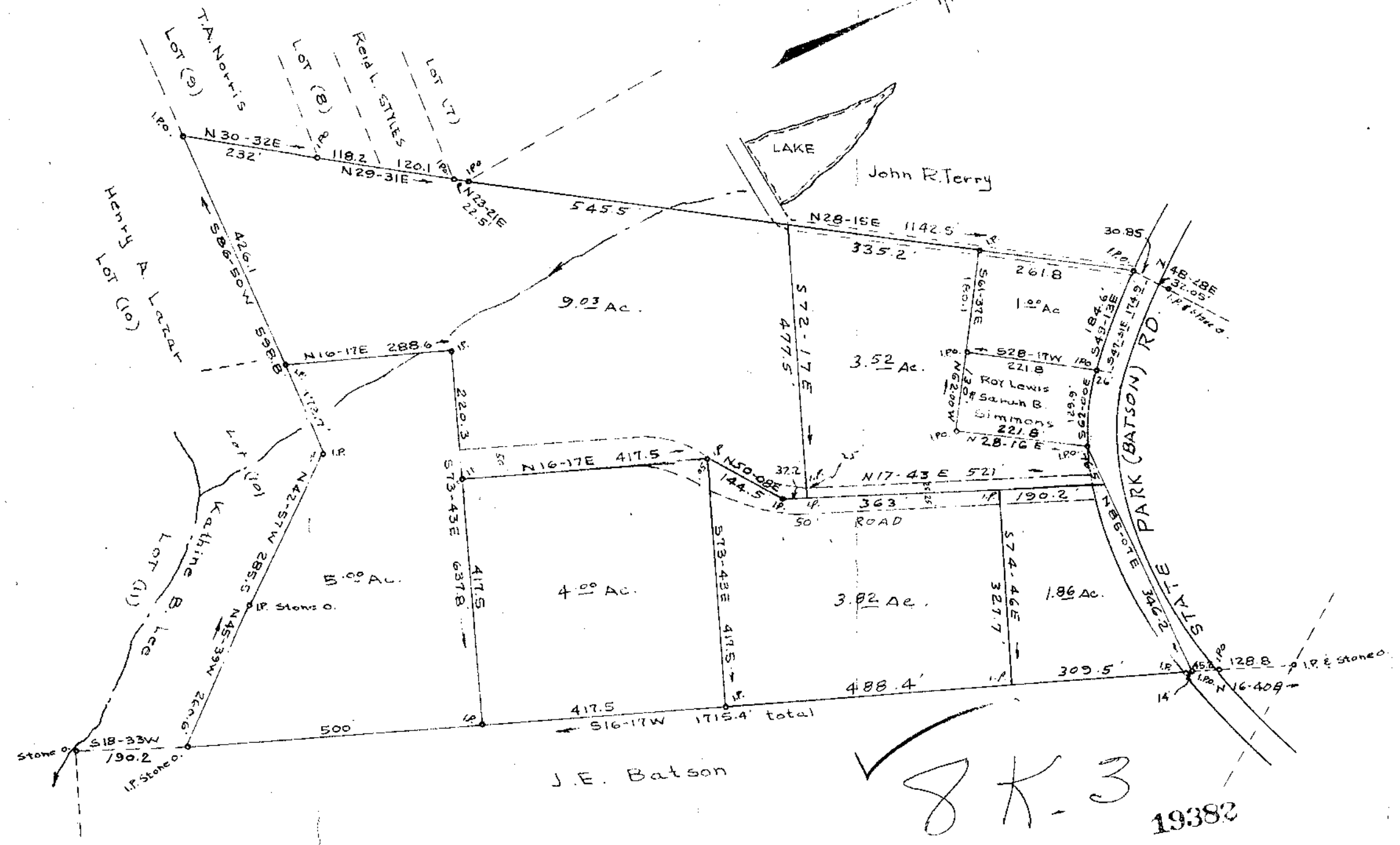
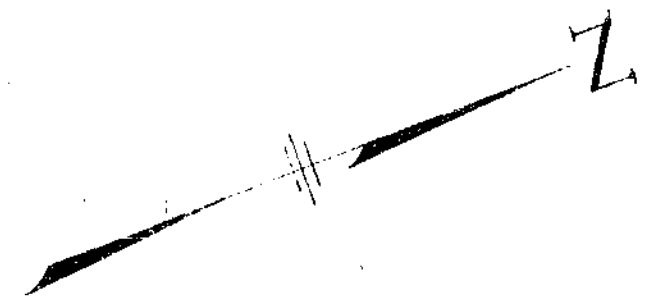


FILED
 GREENVILLE CO. S.C.
 JAN 21 5 59 AM '81
 DONNIE WANKERSLEY
 R.M.C.



THIS PLAT IS NOT A SUBDIVISION
 AS DEFINED BY THE GREENVILLE
 COUNTY SUBDIVISION REGULATIONS.
 12/31/80 *F. J. Forbes*
 Chairman, Secretary, or Director of
 Planning.
 Greenville County Planning Commission

PROPERTY OF
 CLIFTON H. & MAUDE D. SIMMONS
 GREENVILLE COUNTY SOUTH CAROLINA
 SCALE 1"=200'
 JAN 1968

Revised *[Signature]*