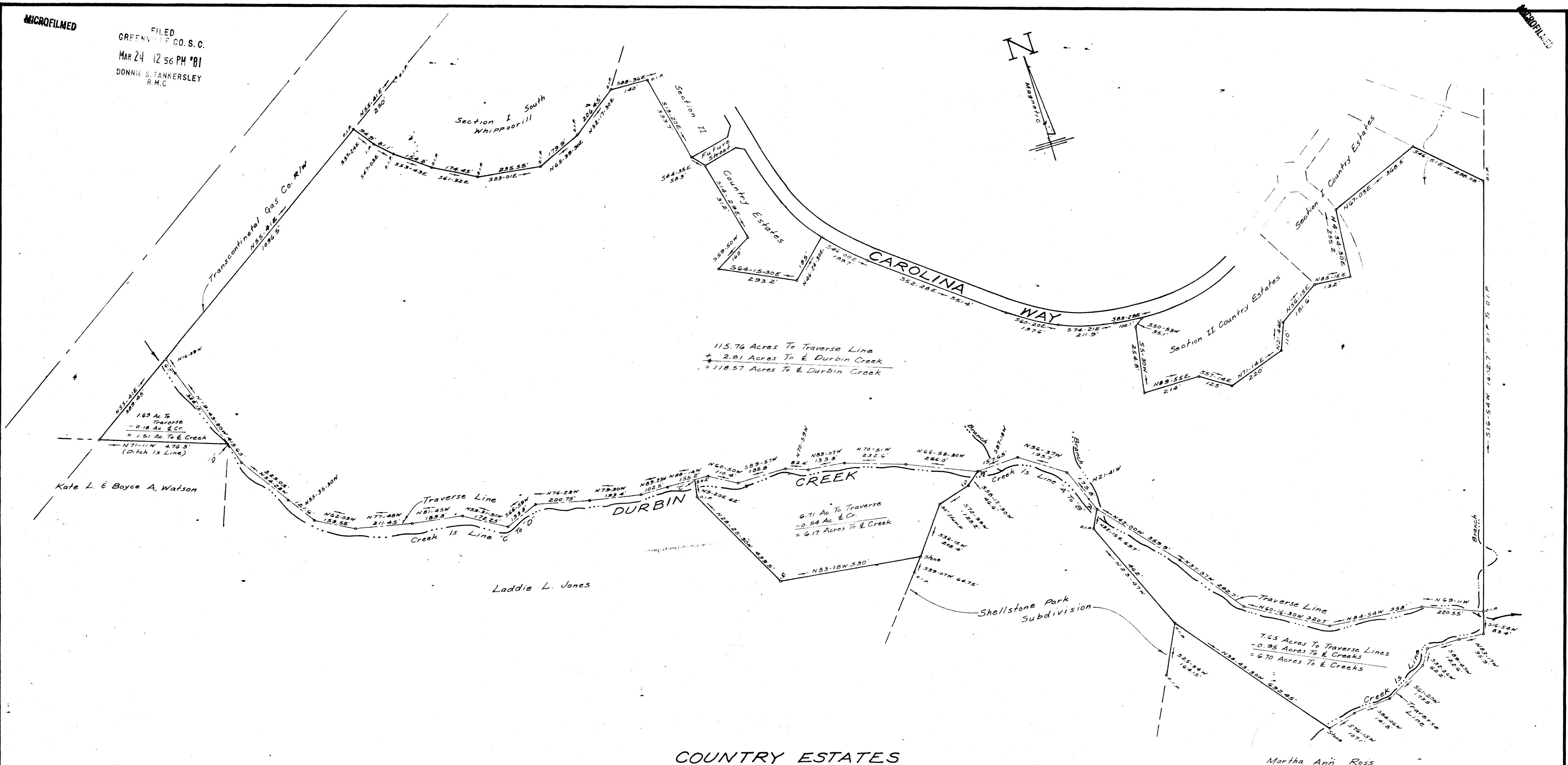
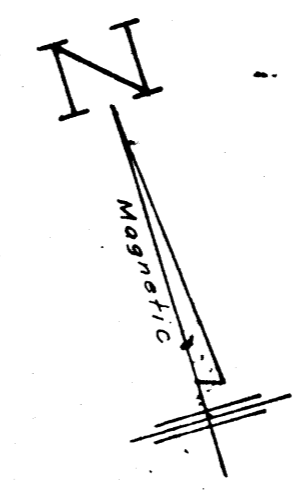


MICROFILMED

FILED
GREENVILLE CO. S.C.
MAR 24 12 56 PM '81
DONNIE S. TANKERSLEY
R.M.C.



115.76 Acres To Traverse Line
+ 2.81 Acres To & Durbin Creek
= 118.57 Acres To & Durbin Creek

6.71 Ac To Traverse
- 0.54 Ac. & Cr.
= 6.17 Acres To & Creek

7.65 Acres To Traverse Lines
- 0.95 Acres To & Creeks
= 6.70 Acres To & Creeks

COUNTRY ESTATES

SURVEY FOR

BAYNE DEVELOPMENT COMPANY

NEAR FOUNTAIN INN, GREENVILLE CO., S. C.

SCALE: 1"=200' APRIL, 1980

THIS PLAT IS NOT A SUBDIVISION
AS DEFINED BY THE GREENVILLE
COUNTY SUBDIVISION REGULATIONS.
383,81 *F. J. Forbes*
Chairman, Secretary, or Director of
Planning.
Greenville County Planning Commission

36629
J-I-97+98

Total Area = 132.95 Acres

MAR 24 1981

W. R. Williams, Jr.
W. R. WILLIAMS, JR.
ENGINEER/SURVEYOR
P.E. & L.S. No. 3979
15 S. MAIN ST.
TRAVELERS REST, S.C.