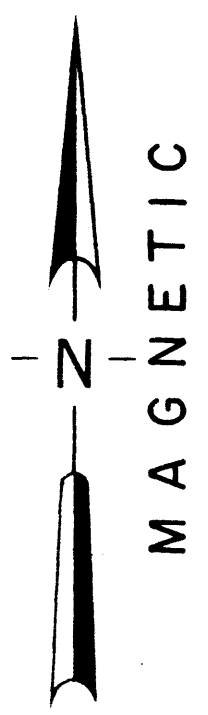
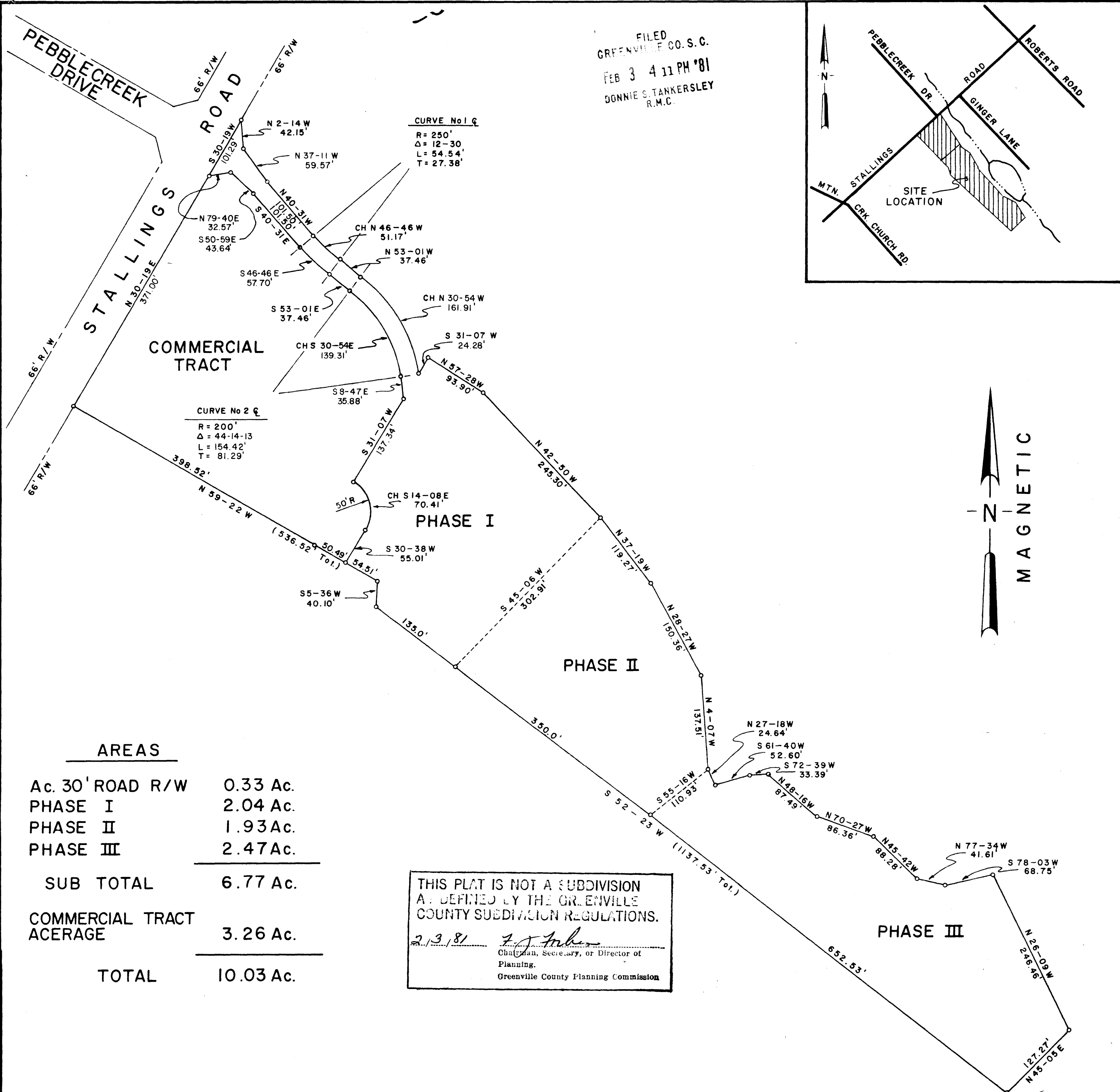
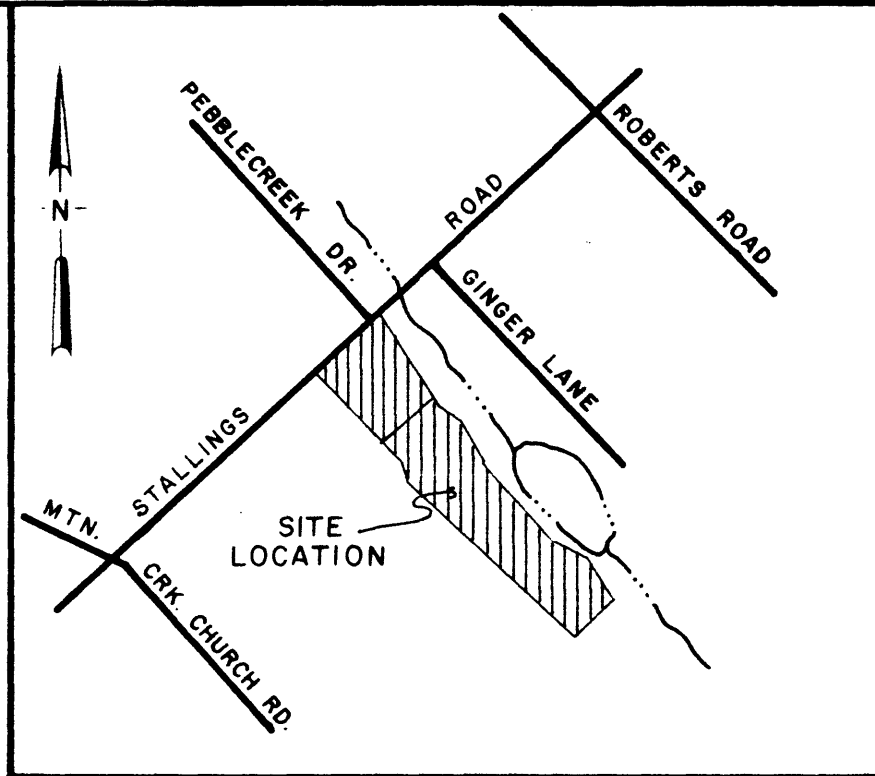


FILED
GREENVILLE CO. S.C.
FEB 3 4 11 PM '81
DONNIE S. TANKERSLEY
R.M.C.



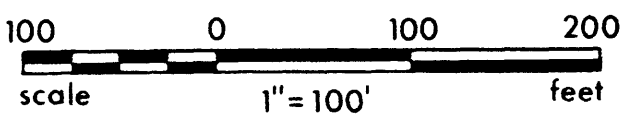
AREAS

Ac. 30' ROAD R/W	0.33 Ac.
PHASE I	2.04 Ac.
PHASE II	1.93 Ac.
PHASE III	2.47 Ac.
SUB TOTAL	6.77 Ac.
COMMERCIAL TRACT ACERAGE	3.26 Ac.
TOTAL	10.03 Ac.

THIS PLAT IS NOT A SUBDIVISION AS DEFINED BY THE GREENVILLE COUNTY SUBDIVISION REGULATIONS.
2/3/81 *[Signature]*
Chairman, Secretary, or Director of Planning.
Greenville County Planning Commission

8 I. 65 ✓

22113



NO.	DATE	BY	DESCRIPTION	APPR.
1	22 JAN 1981	STH	REV. BOUNDARY AT ENTRANCE ROAD.	CJR

NOTE: THIS IS A COMPOSITE PLAT AND DOES NOT CONSTITUTE AN ACTUAL FIELD SURVEY.

[Handwritten signature]

Arbor Engineering, Inc.
P.O. BOX 263, GREENVILLE, S.C.
LANDSCAPE ARCHITECTS • ENGINEERS • RECREATIONAL PLANNERS

[Signature]
7261

SEAL

ACADEMY RENTAL CO., INC.
PROPERTY SURVEY

PEBBLECREEK P.U.D. PHASE IX SEC. I
GREENVILLE SOUTH CAROLINA

DRAWN WNS DESIGN WNS CHECK WNS DATE 13 JAN 81
SCALE 1" = 100' FILE DWG. NO. 80062